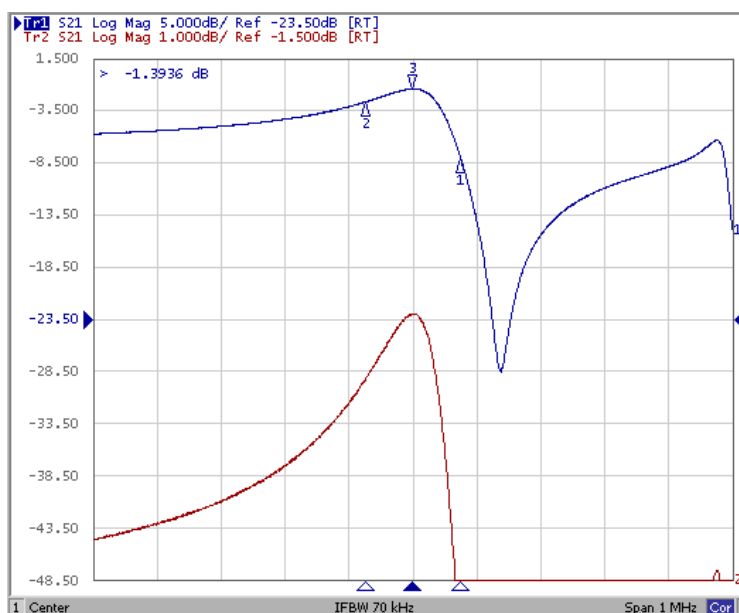


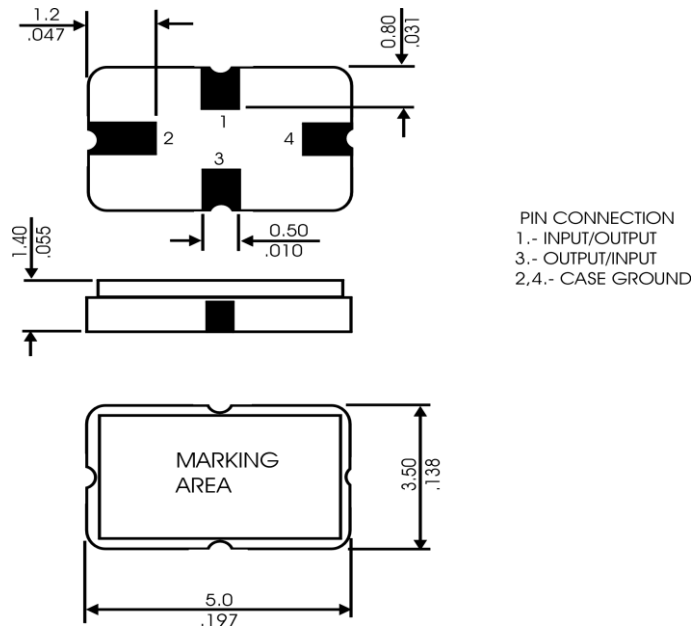
Electrical Specification

Items	Specification	Unit
Center frequency (fo)	345.000 ± 0.075	MHz
Insertion Loss, typ/max	1.5 / 2.2	dB
Quality Factor Unloaded, min/typ	13000/13541	-
Quality Factor 50 Ω Loaded, min/typ	1000/1342	-
Turnover Temperature	25 ~ 55	°C
Frequency Temperature Coefficient, typ	-0.032	ppm/°C ²
Frequency Aging, max	±10	ppm/year
Insulation Resistance (DC), min	1.0	MΩ
Motional Resistance	15	Ω
Motional Inductance	80.3	μH
Motional Capacitance	2.65	fF
Shunt Static Capacitance	2.2	pF
DC Voltage, Max	30	V
AC Voltage V _{pp} , 50/60Hz	10	V
Input Power, max	10	dBm
Operating Temperature Range	-40 to +85	°C
Storage Temperature Range	-45 to +85	°C

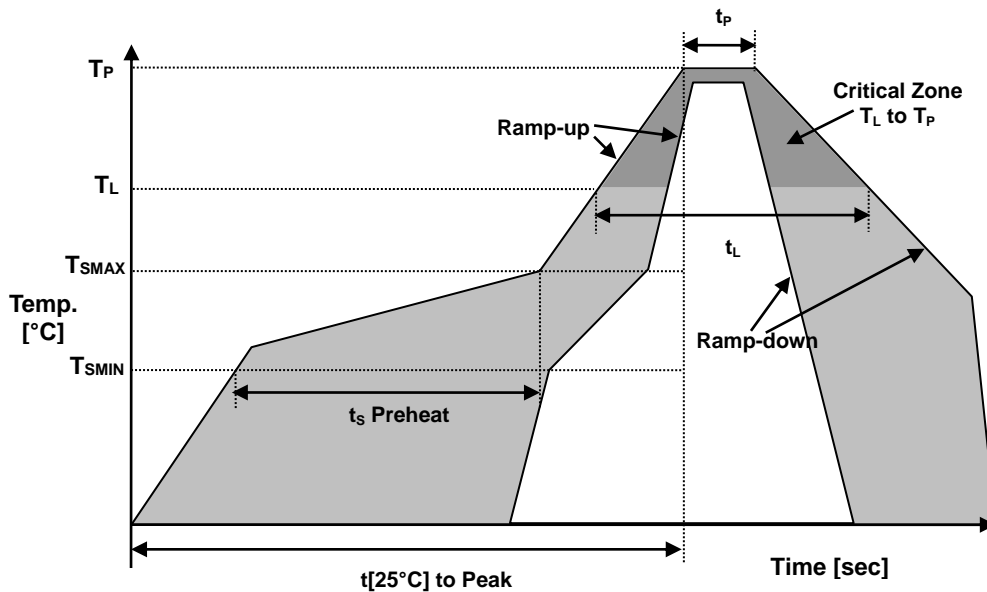
Frequency Characteristics



Dimension



REFLOW PROFILE



Reflow profile		
Temperature Min Preheat	T_{SMIN}	150°C
Temperature Max Preheat	T_{SMAX}	200°C
Time (T_{SMIN} to T_{SMAX})	t_S	60-180 sec.
Temperature	T_L	217°C
Peak Temperature	T_P	260°C
Ramp-up rate	R_{UP}	3°C/sec max.
Ramp-down rate	R_{DOWN}	6°C/sec max.
Time within 5°C of Peak Temperature	t_P	10 sec.
Time $t[25^\circ\text{C}]$ to Peak Temperature	$t[25^\circ\text{C}]$ to Peak	480 sec.
Time	t_L	60-150 sec.

● ENVIRONMENTAL

PARAMETER	VALUE
MOISTURE SENSITIVITY LEVEL	1
RoHS-2	6/6 COMPLIANT & LEAD FREE
REACH SVHC	COMPLIANT
HALOGEN-FREE	COMPLIANT
ESD CLASSIFICATION LEVEL	N/A
TERMINATION FINISH	Au



● APPROVAL

DRAWN BY	CP, January 29, 2016
APPROVED BY	CP, January 29, 2016
REVISION	A, Initial Release B, CP March 08, 2016 Added Motional Resistance, Motional Capacitance, Motional Inductance