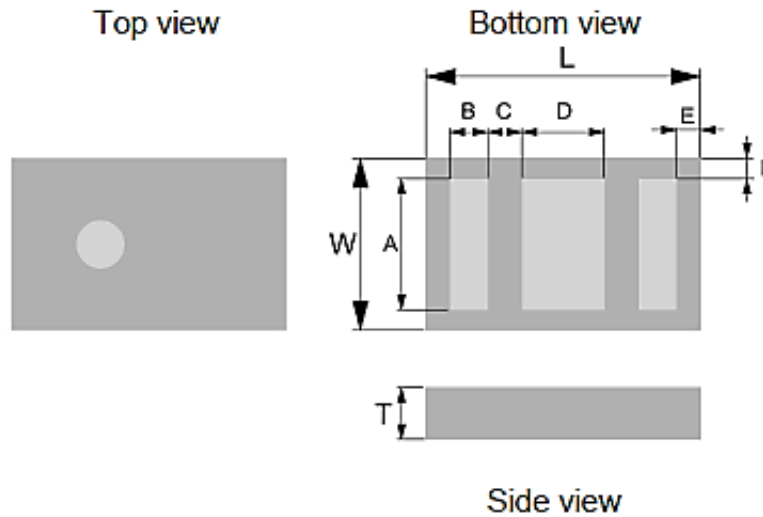


Parameters		Value	Unit
Frequency Range		2490.000 ~ 2690.000	MHz
Insertion Loss, max	@ 25°C	2.1	dB
Attenuation, min	824 ~ 915 MHz	34	dB
	2110 ~ 2170 MHz	30	dB
VSWR, max		2.0	-
Impedance		50	Ω
Moisture Sensitivity Levels		Level 1	-
Operating Temperature Range		-40 ~ +85	°C

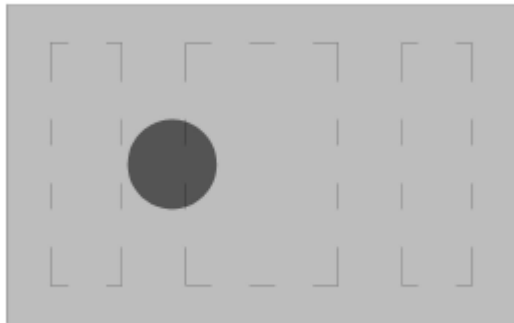
Dimension



	L	W	T	A	B	C	D	E	F
Dimension (mm)	2.00 ± 0.15	1.25 ± 0.10	0.80 ± 0.10	0.95 ± 0.10	0.275 ± 0.10	0.25 ± 0.10	0.60 ± 0.10	0.175 ± 0.10	0.15 ± 0.10

PINS CONNETIONS

Top view



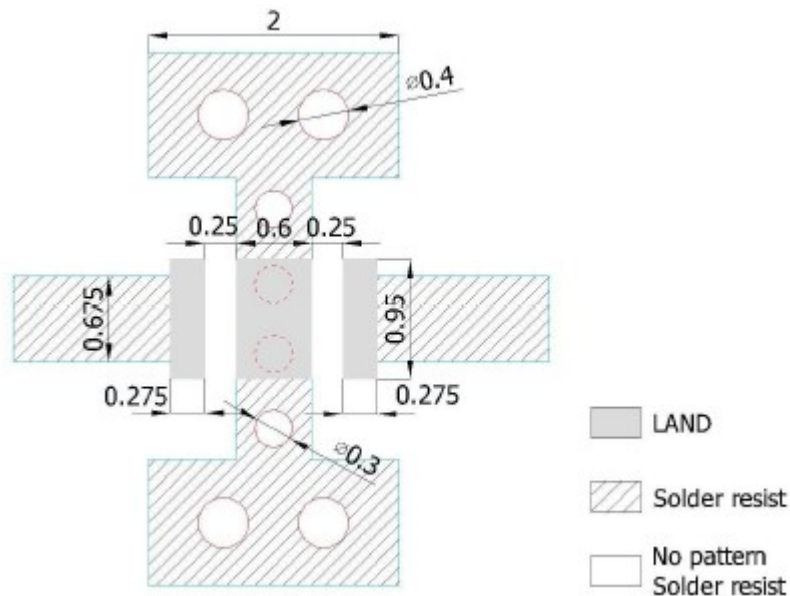
P1

P2

P3

PIN	Connection
1	Input Port
2	GND
3	Output Port

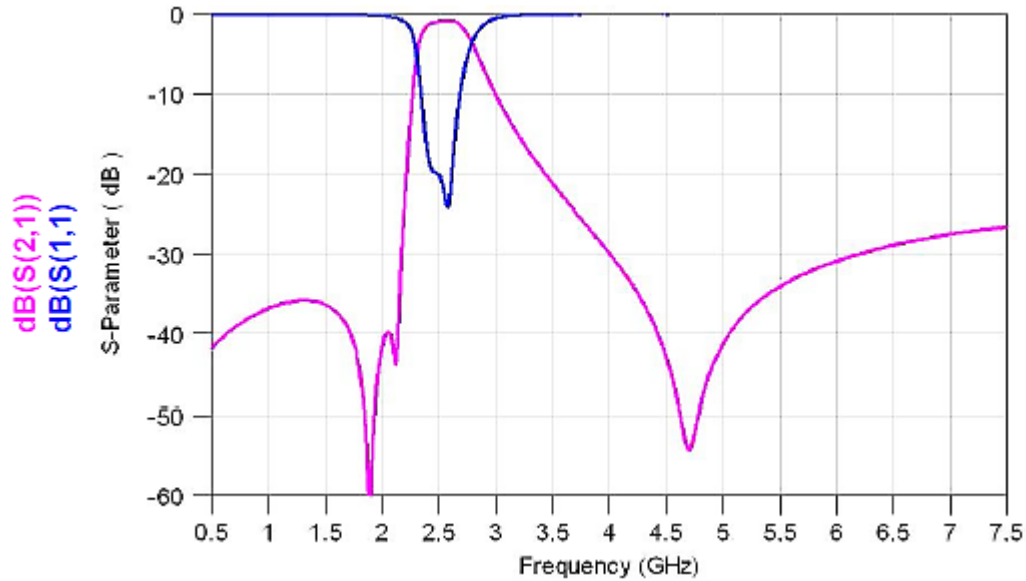
SOLDER LAND PATTERN



Unit: mm

Line width to be designed to match 50 Ω characteristic impedance, depending on PCB material and thickness.

Frequency Characteristic



Raltron Electronics / RAMI Technology USA, LLC, including its affiliates, employees, agents and other persons acting on its behalf (collectively Raltron/RAMI Tech), disclaim any and all liability for any errors or inaccuracies contained in this data sheet. While Raltron/RAMI Tech has made every reasonable effort to ensure the accuracy of all product information, specifications and data contained herein, Raltron/RAMI Tech does not guarantee that the information is accurate, reliable or current. The product information is provided only for reference purposes only and is subject to change, correction or revision, at any time without notice. Raltron/RAMI Tech does not assume any liability arising out of an application or use of any product described herein and disclaims any warranties expressed or implied. The user of products in such applications shall assume all risks of such use and will agree to hold Raltron/RAMI Tech, harmless against all damages.

Copyright © 2016, Raltron Electronics / RAMI Technology USA, LLC. All rights reserved. No part of this document may be reproduced in any form without the prior written permission of Raltron Electronics / RAMI Technology USA, LLC.

April 29, 2019