

#### ELECTRICAL SPECIFICATION

PARAMETERS		VALUE	UNIT
Frequency Range		2400.000 ~ 2500.000	MHz
Insertion Loss, max	@ 25°C	0.95	dB
	@-40 ~ +85°C	1.25	dB
VSWR, max		2.0	-
Impedance		50	Ω
Attenuation, min	500 ~ 960 MHz	20	dB
	3200 MHz	23	dB
	4800 ~ 5000 MHz	30	dB
	7200 ~ 7500 MHz	32	dB
Power Capacity, max		2	W
Operating Temperature Range		-40 ~ +85	°C
Storage Temperature Range		-40 ~ +85	°C
Storage Condition Before Soldering (Included Packaging Material)	Storage Temperature Range	+5 ~ +40	°C
	Relative Humidity	30 ~ 70	%

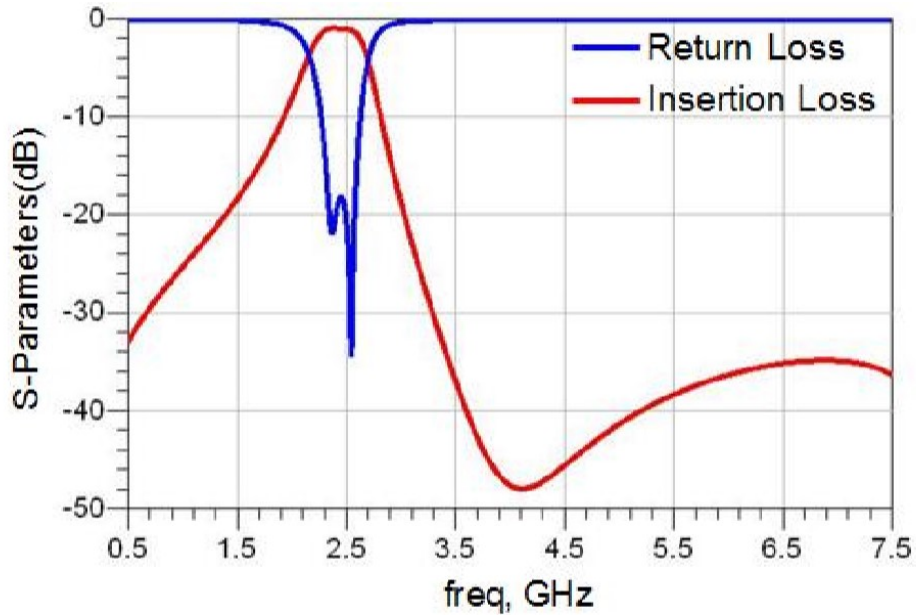
#### MECHANICAL SPECIFICATION

Unit: mm

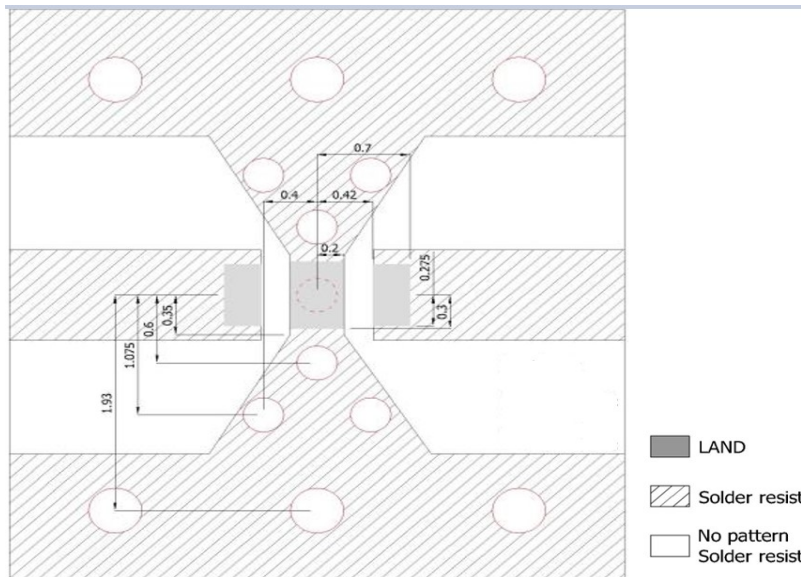
	L	W	T	A	B
Dimension	1.60 ± 0.15	0.80 ± 0.10	0.65 max	0.25 ± 0.10	0.23 ± 0.05
	C	D	E	F	
Dimension	0.40 ± 0.10	0.30 ± 0.15	0.55 ± 0.10	0.60 ± 0.10	

PIN	1	2	3
Connection	INPUT	GND	OUTPUT

#### Typical Electrical Performance



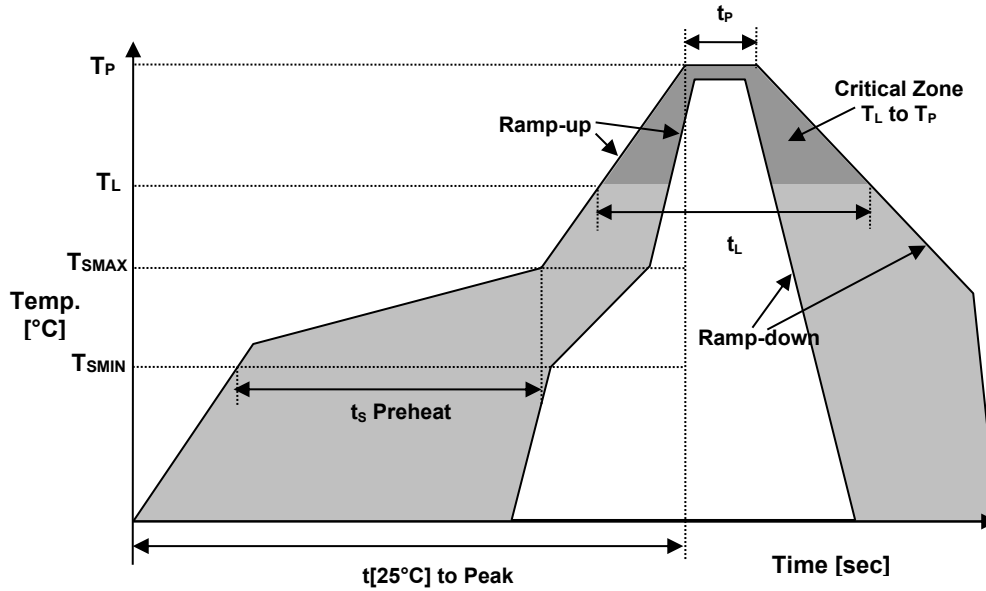
#### Solder Land Pattern



Unit : mm

Line width to be designed to match 50  $\Omega$  characteristic impedance, depending on PCB material and thickness.

#### REFLOW PROFILE



Reflow profile		
Temperature Min Preheat	$T_{SMIN}$	150°C
Temperature Max Preheat	$T_{SMAX}$	200°C
Time ( $T_{SMIN}$ to $T_{SMAX}$ )	$t_s$	60-180 sec.
Temperature	$T_L$	217°C
Peak Temperature	$T_P$	260°C
Ramp-up rate	$R_{UP}$	3°C/sec max.
Ramp-down rate	$R_{DOWN}$	6°C/sec max.
Time within 5°C of Peak Temperature	$t_p$	10 sec.
Time $t[25^\circ\text{C}]$ to Peak Temperature	$t[25^\circ\text{C}] \text{ to Peak}$	480 sec.
Time	$t_L$	60-150 sec.

#### ENVIRONMENTAL

PARAMETER	VALUE
MOISTURE SENSITIVITY LEVEL	1
RoHS	Compliant
REACH-SVHC	Compliant
HALOGEN-FREE	Compliant
TERMINATION FINISH	Sn



Raltron Electronics / RAMI Technology USA, LLC, including its affiliates, employees, agents and other persons acting on its behalf (collectively Raltron/RAMI Tech), disclaim any and all liability for any errors or inaccuracies contained in this data sheet. While Raltron/RAMI Tech has made every reasonable effort to ensure the accuracy of all product information, specifications and data contained herein, Raltron/RAMI Tech does not guarantee that the information is accurate, reliable or current. The product information is provided only for reference purposes only and is subject to change, correction or revision, at any time without notice. Raltron/RAMI Tech does not assume any liability arising out of an application or use of any product described herein and disclaims any warranties expressed or implied. The user of products in such applications shall assume all risks of such use and will agree to hold Raltron/RAMI Tech, harmless against all damages.

Copyright © 2016, Raltron Electronics / RAMI Technology USA, LLC. All rights reserved. No part of this document may be reproduced in any form without the prior written permission of Raltron Electronics / RAMI Technology USA, LLC.

August 05, 2019