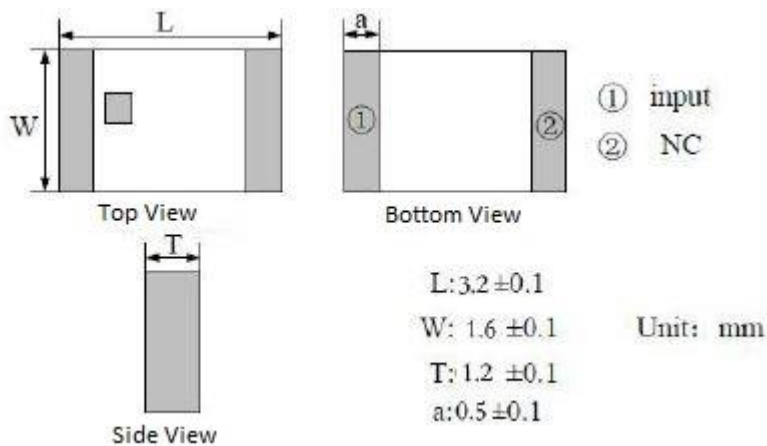
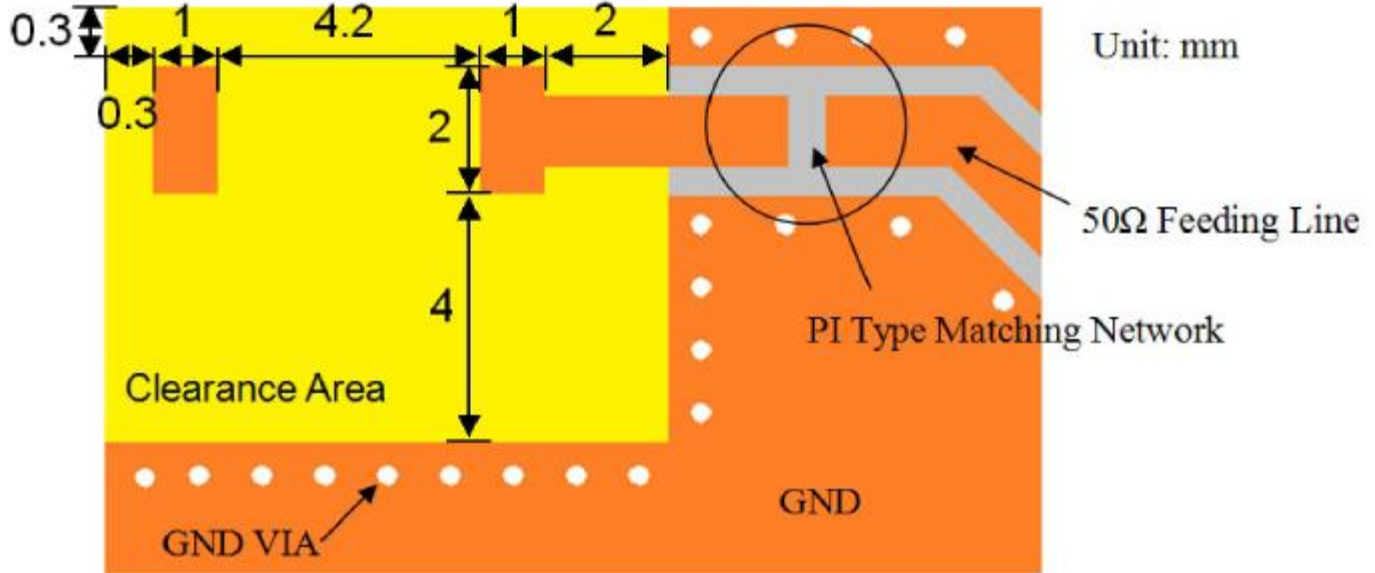


#### ELECTRICAL SPECIFICATION

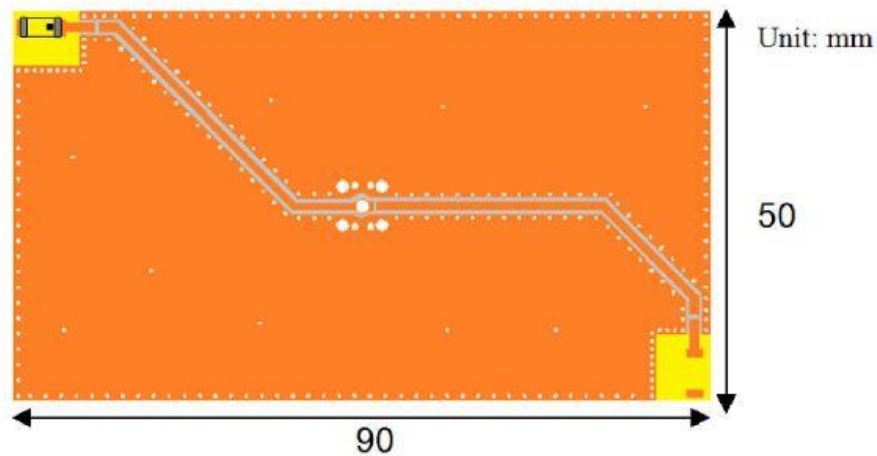
PARAMETERS	SPECIFICATIONS	UNIT
Center Frequency	2450	MHz
Band Width, typ	100	MHz
Peak Gain	4.97	dBi
Impedance	50	$\Omega$
VSWR, max	2.0	-
Polarization	Linear	-
Azimuth Beam Width	Omni-directional	-
Operating Temperature Range	-40 ~ +85	$^{\circ}\text{C}$
Storage Temperature Range	-40 ~ +85	$^{\circ}\text{C}$

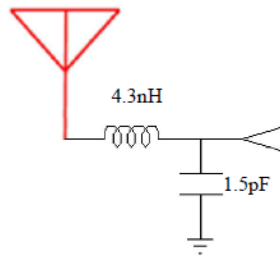
#### MECHANICAL SPECIFICATION



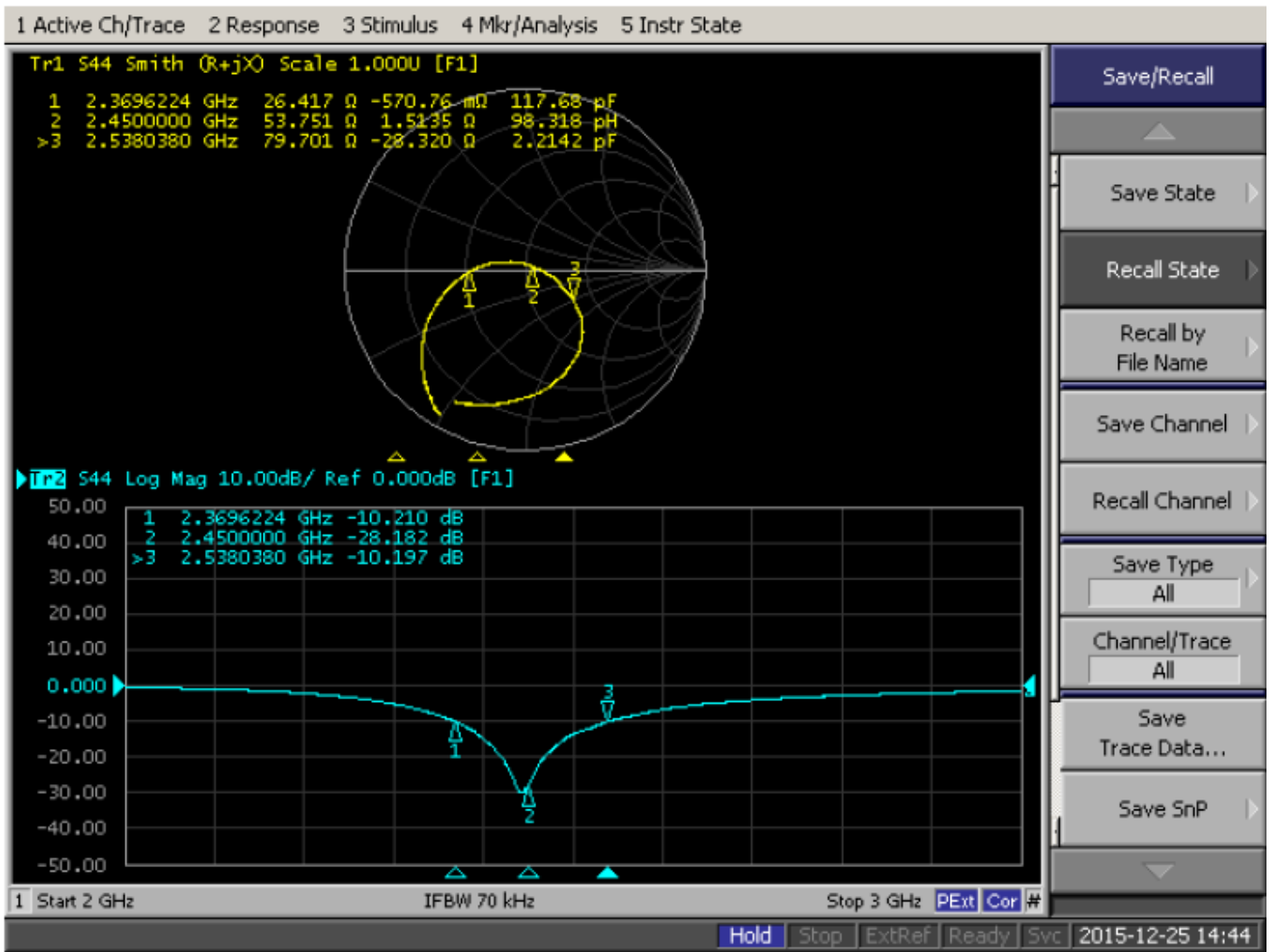


#### ■ EVALUATION BOARD AND MATCHING CIRCUIT

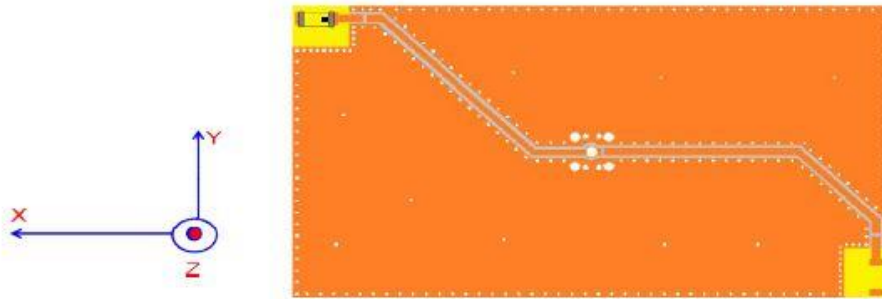




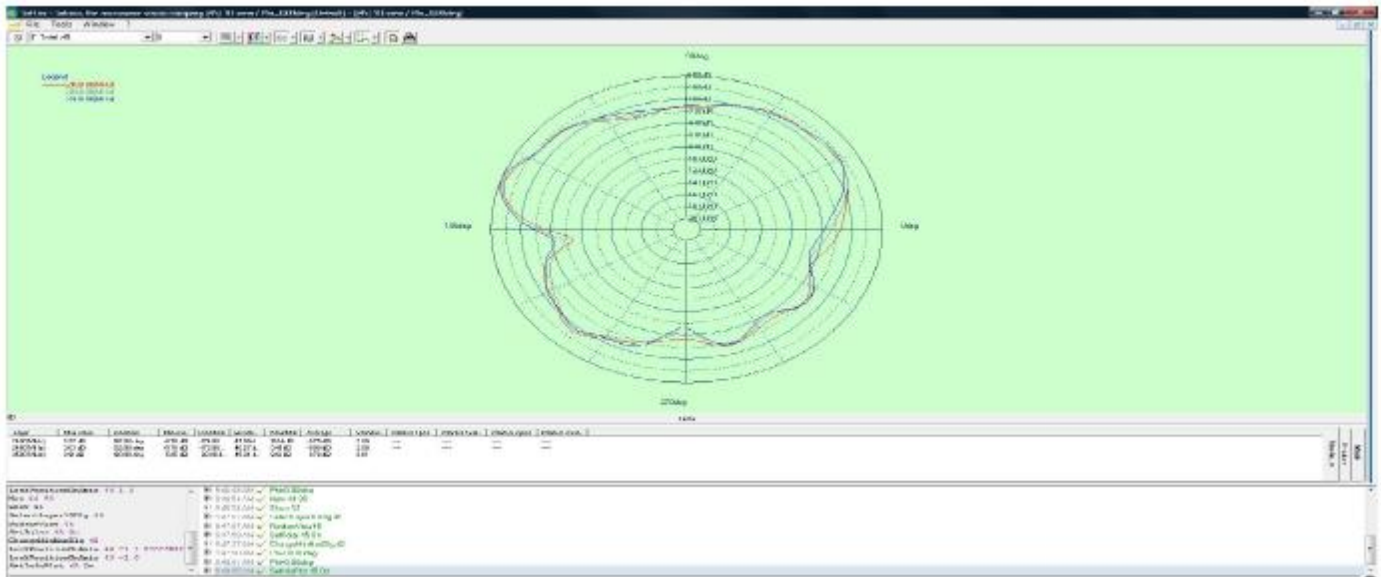
#### ■ FREQUENCY CHARACTERISTICS



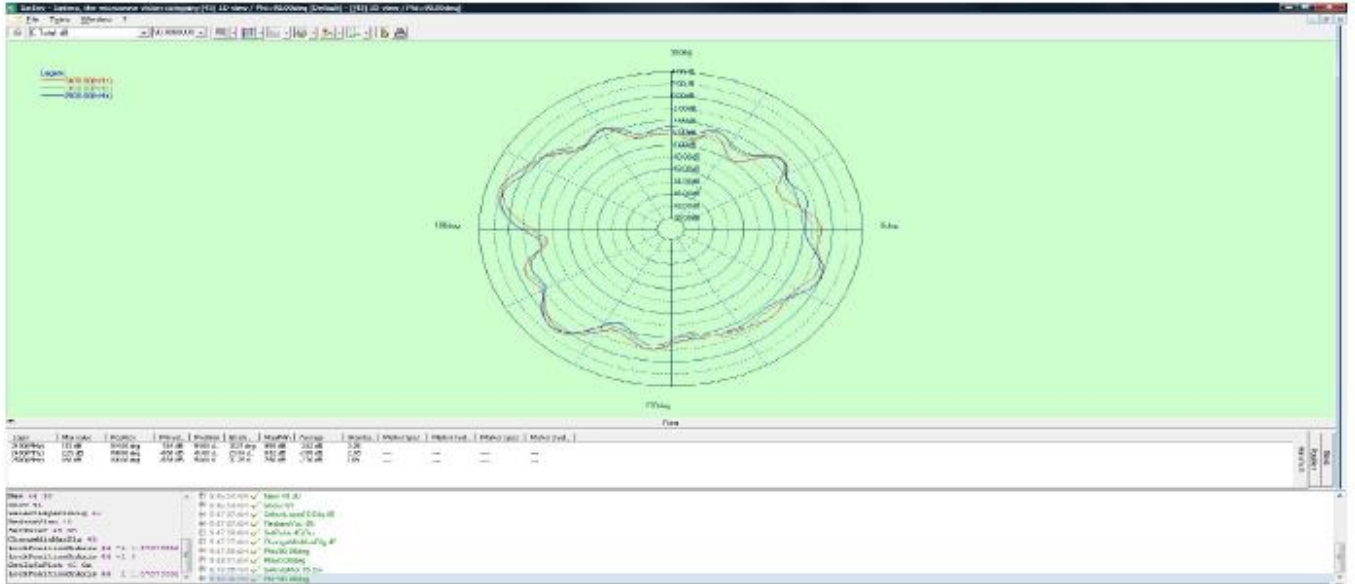
#### RADIATION PATTERN



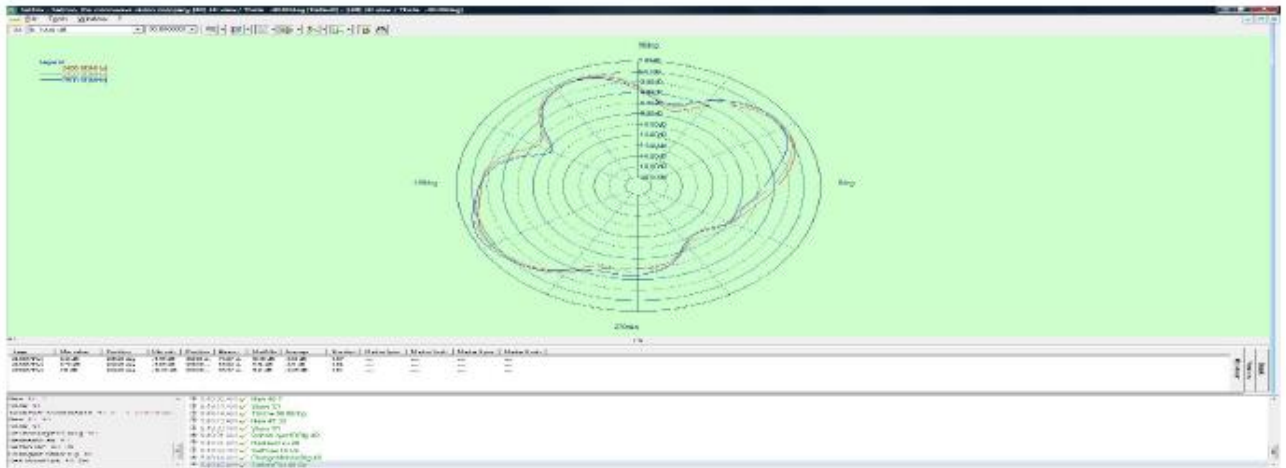
#### X-Z Plane

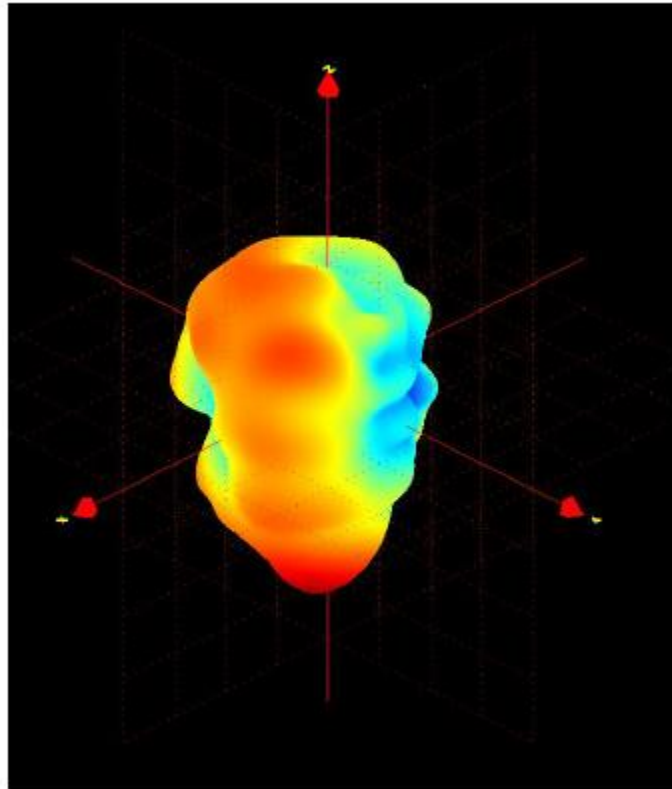


#### Y-Z Plane



#### X-Y Plane





PARAMETERS	VALUES			UNIT
Frequency	2400	2450	2500	MHz
Average Gain	-0.75	-0.79	-0.88	dBi
Peak Gain	4.52	4.97	4.85	dBi
Efficiency	70.2	71.1	71.2	%

May, 2016