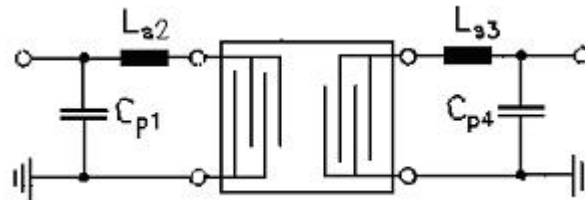


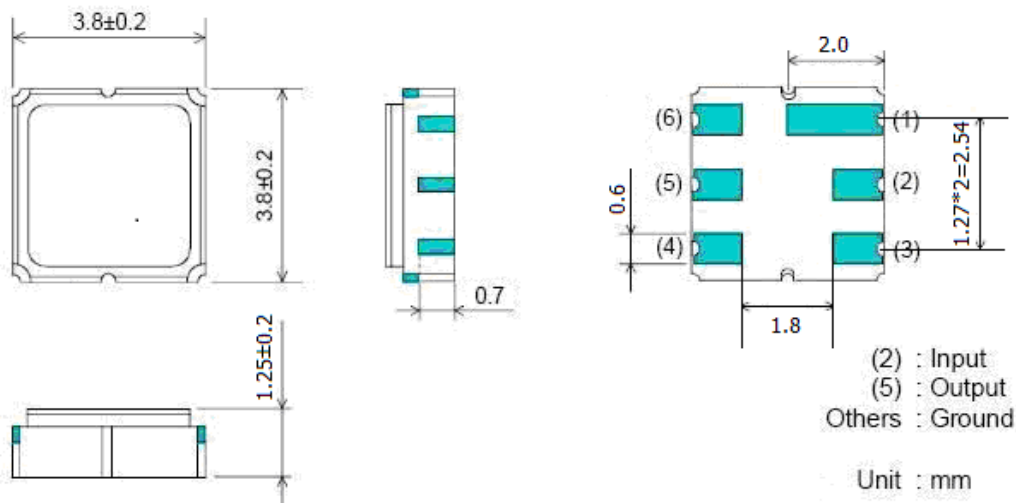
Items		Specification	Unit
Center frequency (Fc)		315.000	MHz
-1dB Bandwidth		390 ± 60	kHz
-3dB Bandwidth min/typ/max		350 / 500 / 600	kHz
Insertion Loss in BW, Max typ/max		2.5 / 3.5	dB
Absolute Delay		1.5	µs
Group Delay Ripple typ/max		0.5 / 1.2	µs
Stop Band Attenuation	312.5MHz (Fc-2.5MHz) min/typ	30 / 40	dB
	314.0MHz (Fc-1.0MHz) min/typ	25 / 35	dB
	314.5MHz (Fc-0.5MHz) min/typ	10 / 20	dB
	315.5MHz (Fc+0.5MHz) min/typ	10 / 15	dB
	316.0MHz (Fc+1.0MHz) min/typ	25 / 33	dB
	317.5MHz (Fc+2.5MHz)min/typ	30 / 38	dB
Terminating Source Impedance (and matching network)		50	Ω
Terminating Load Impedance (and matching network)		50	Ω
Input Power Maximum		10 dBm	
Operating Temperature Range		-40°C to +85°C	
Storage Temperature		-45°C to +85°C	

Matching network to 50Ω (element values depend on pcb layout and equivalent circuit)

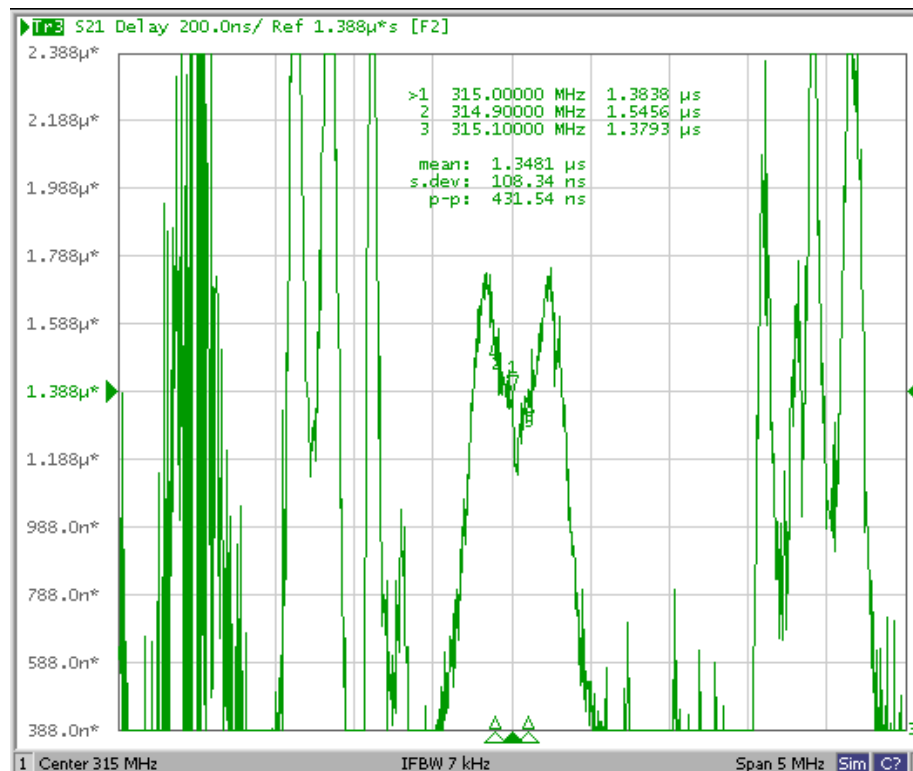
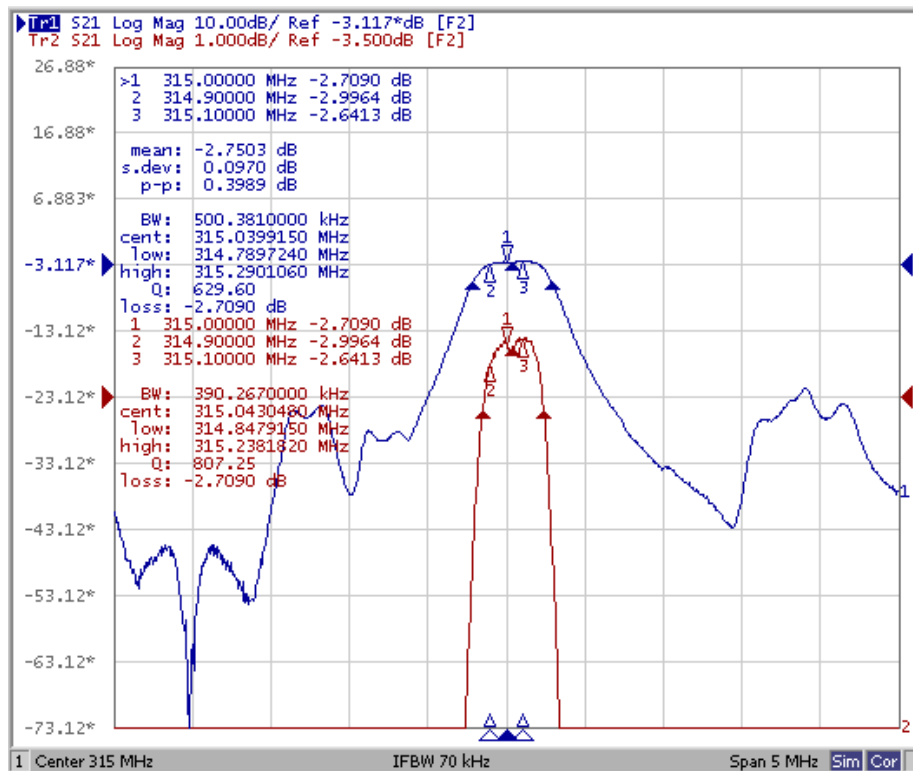


$L_{s2} = L_{s3} = 40 \text{ nH}; C_{p1} = C_{p4} = 13 \text{ pF}$

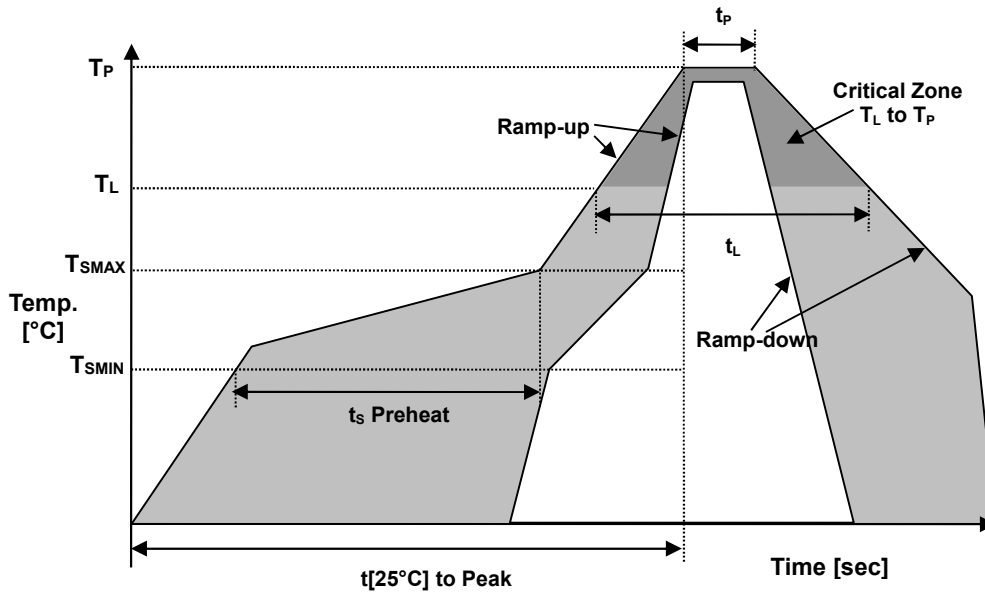
Dimension



Typical Frequency Response



● **REFLOW PROFILE**



Reflow profile		
Temperature Min Preheat	T_{SMIN}	150°C
Temperature Max Preheat	T_{SMAX}	200°C
Time (T_{SMIN} to T_{SMAX})	t_s	60-180 sec.
Temperature	T_L	217°C
Peak Temperature	T_P	260°C
Ramp-up rate	R_{UP}	3°C/sec max.
Ramp-down rate	R_{DOWN}	6°C/sec max.
Time within 5°C of Peak Temperature	t_p	10 sec.
Time t[25°C] to Peak Temperature	t[25°C] to Peak	480 sec.
Time	t_L	60-150 sec.

Environmental

PARAMETER	VALUE
MOISTURE SENSITIVITY LEVEL	1
TERMINATION FINISH	Au
REACH – SVHC	Compliant
RoHS 2	6/6
PACKAGING	TAPE & REEL

April 2016