

Electrical Specification

LOW FREQUENCY FILTER L5

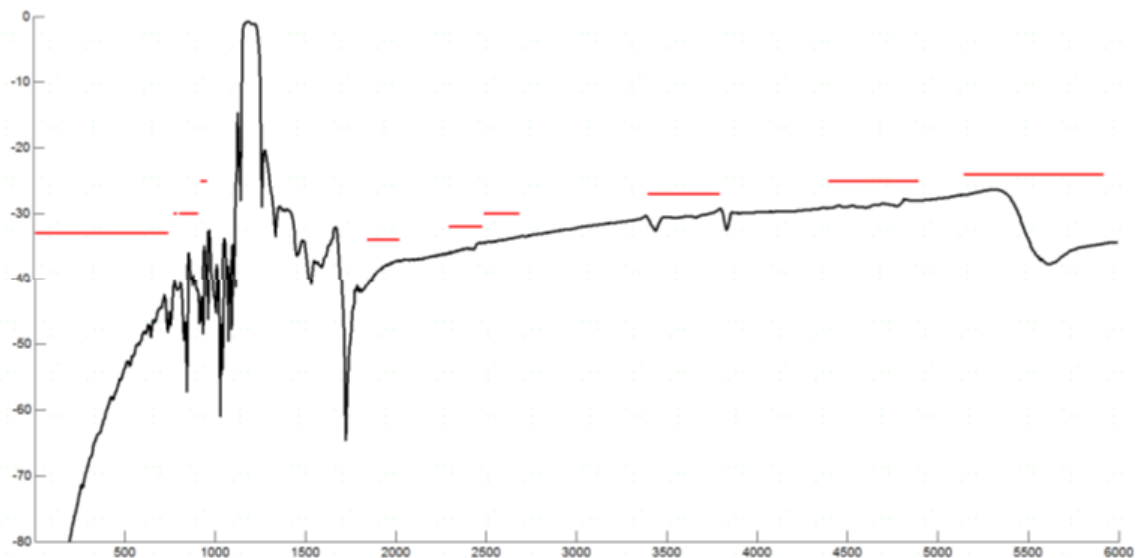
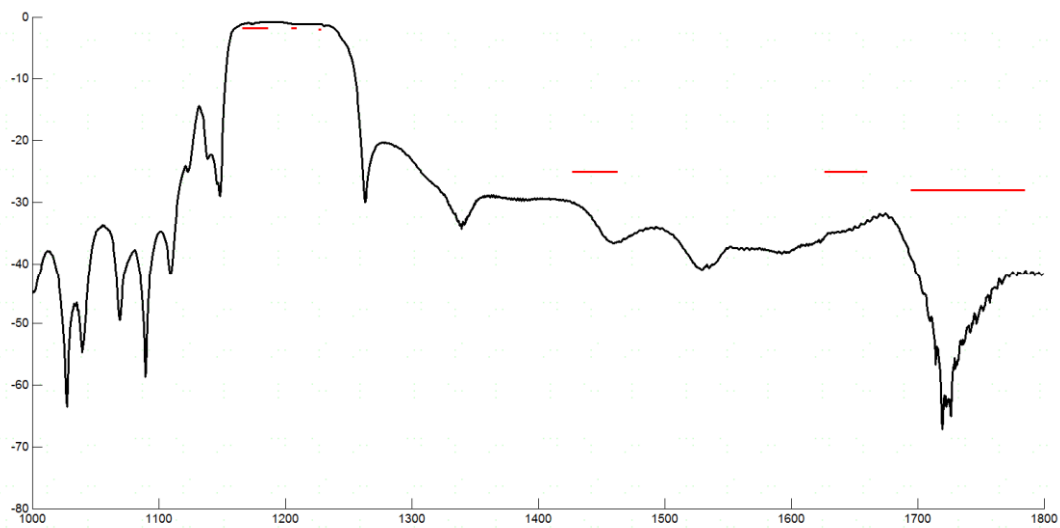
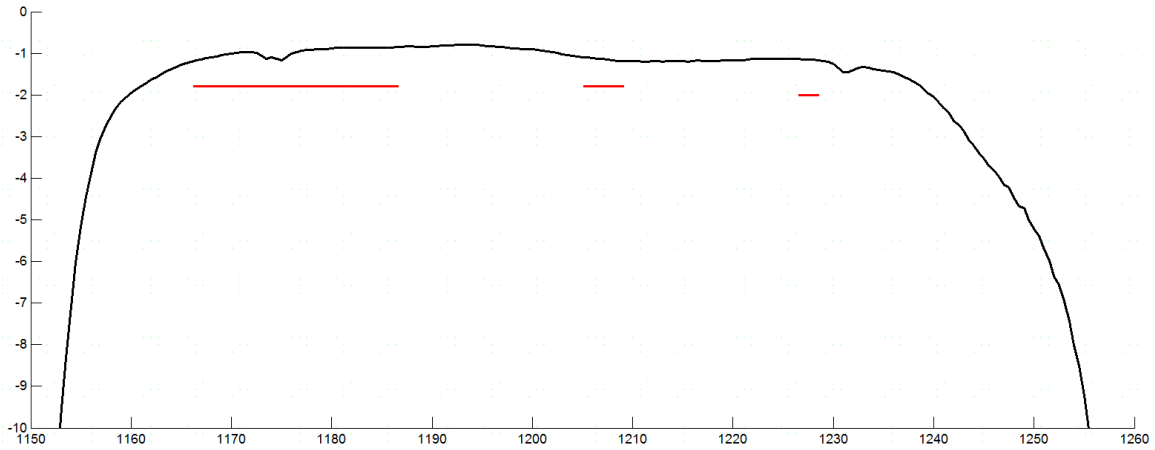
Parameters		Value	Unit
Insertion Loss, typ/max	1166.220 ~ 1186.680 MHz	1.2 / 1.8	dB
	1205.090 ~ 1209.190 MHz	1.2 / 1.8	dB
	1226.580 ~ 1228.620 MHz	1.2 / 2.0	dB
Pass Band Ripple, typ/max	1166.220 ~ 1228.620 MHz	0.5 / 1.0	dB
Group Delay Ripple,typ/max	1166.220 ~ 1228.620 MHz	10 / 25	ns
VSWR, typ/max	1166.220 ~ 1228.620 MHz	1.5 / 2.0	-
Attenuation, min/typ	DC ~ 748.000 MHz	-33 / -40	dB
	777.000 ~ 798.000 MHz	-30 / -40	dB
	807.000 ~ 915.000 MHz	-30 / -36	dB
	925.000 ~ 960.000 MHz	-25 / -32	dB
	1427.000 ~ 1463.000 MHz	-25 / -30	dB
	1626.500 ~ 1660.500 MHz	-25 / -33	dB
	1695.000 ~ 1785.000 MHz	-28 / -36	dB
	1850.000 ~ 2025.000 MHz	-34 / -37	dB
	2300.000 ~ 2400.000 MHz	-32 / -36	dB
	2400.000 ~ 2483.000 MHz	-32 / -35	dB
	2496.000 ~ 2690.000 MHz	-30 / -33	dB
	3400.000 ~ 3800.000 MHz	-27 / -30	dB
	4400.000 ~ 4900.000 MHz	-25 / -28	dB
5150.000 ~ 5925.000 MHz	-24 / -27	dB	
Input Power, max	@ 50°C, CW 5000h	15	dBm
DC Voltage, max		5	V DC
Operating Temperature Range		-30 ~ +85	°C
Storage Temperature Range		-40 ~ +85	°C
ESD Voltage Sensitive Discharge Device	ESD(MM)	50	VDC
	ESD(HBM)	175	VDC

HIGH FREQUENCY FILTER L1

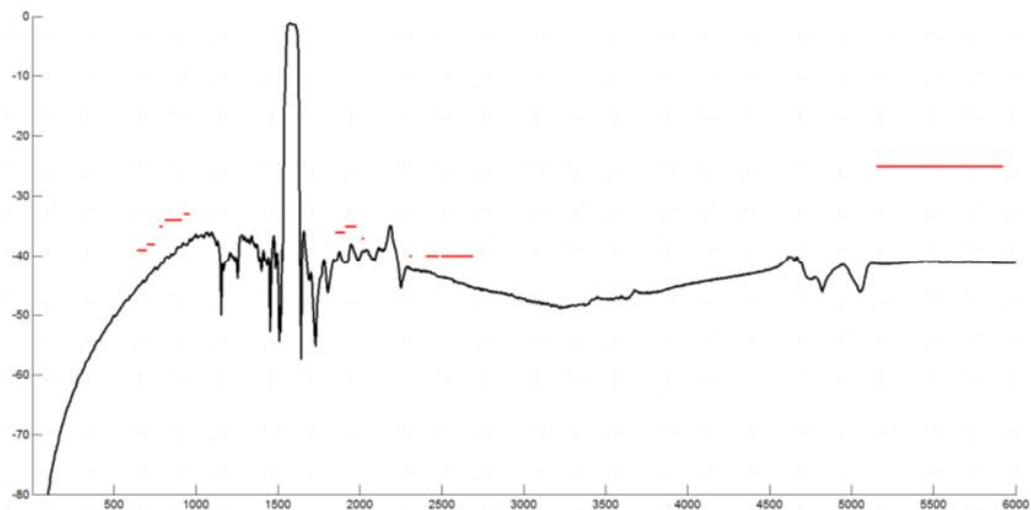
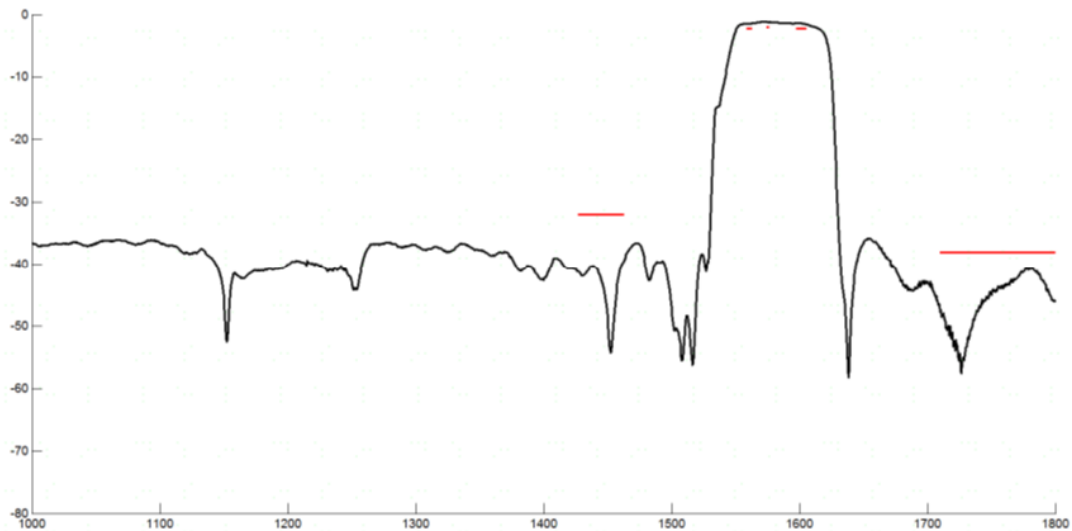
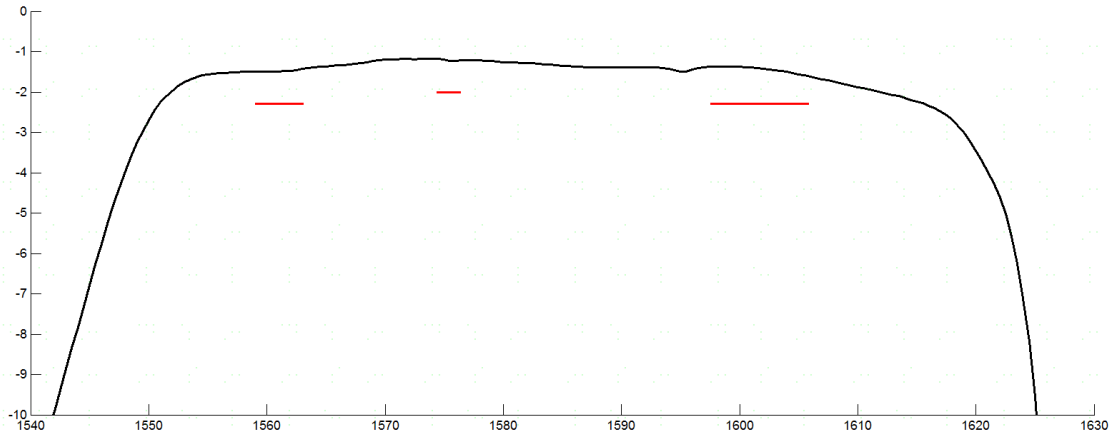
Parameters		Value	Unit
Insertion Loss, typ/max	1574.390 ~ 1576.450 MHz	1.2 / 2.0	dB
	1559.050 ~ 1563.150 MHz	1.5 / 2.3	dB
	1597.550 ~ 1605.890 MHz	1.6 / 2.3	dB
Pass Band Ripple, typ/max	1559.050 ~ 1605.890 MHz	0.5 / 1.0	dB
Group Delay Ripple,typ/max	1559.050 ~ 1605.890 MHz	7 / 20	ns
VSWR, typ/max	1559.050 ~ 1605.890 MHz	1.6 / 2.1	dB
Attenuation, min/typ	638.000 ~ 698.000 MHz	-39 / -44	dB
	698.000 ~ 748.000 MHz	-38 / -42	dB
	777.000 ~ 798.000 MHz	-35 / -41	dB
	807.000 ~ 915.000 MHz	-34 / -38	dB
	925.000 ~ 960.000 MHz	-33 / -37	dB
	1427.000 ~ 1463.000 MHz	-32 / -37	dB
	1710.000 ~ 1800.000 MHz	-38 / -41	dB
	1850.000 ~ 1910.000 MHz	-36 / -39	dB
	1910.000 ~ 1980.000 MHz	-35 / -38	dB
	2010.000 ~ 2025.000 MHz	-37 / -40	dB
	2300.000 ~ 2315.000 MHz	-40 / -43	dB
	2401.000 ~ 2483.000 MHz	-40 / -43	dB
	2496.000 ~ 2690.000 MHz	-40 / -44	dB
5150.000 ~ 5925.000 MHz	-25 / -41	dB	
Input Power, max	@ 50°C, CW 5000h	15	dBm
DC Voltage, max		5	V DC
Operating Temperature Range		-30 ~ +85	°C
Storage Temperature Range		-40 ~ +85	°C
ESD Voltage Sensitive Discharge Device	ESD(MM)	50	VDC
	ESD(HBM)	175	VDC

Frequency Characteristics

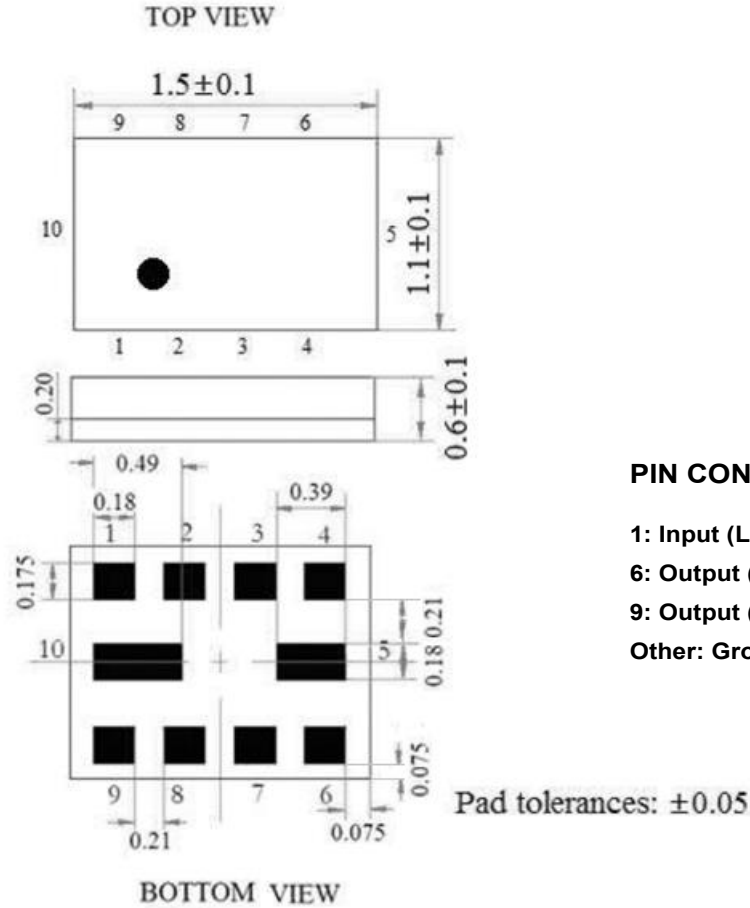
LOW FREQUENCY FILTER L5



HIGH FREQUENCY FILTER L1



Dimension

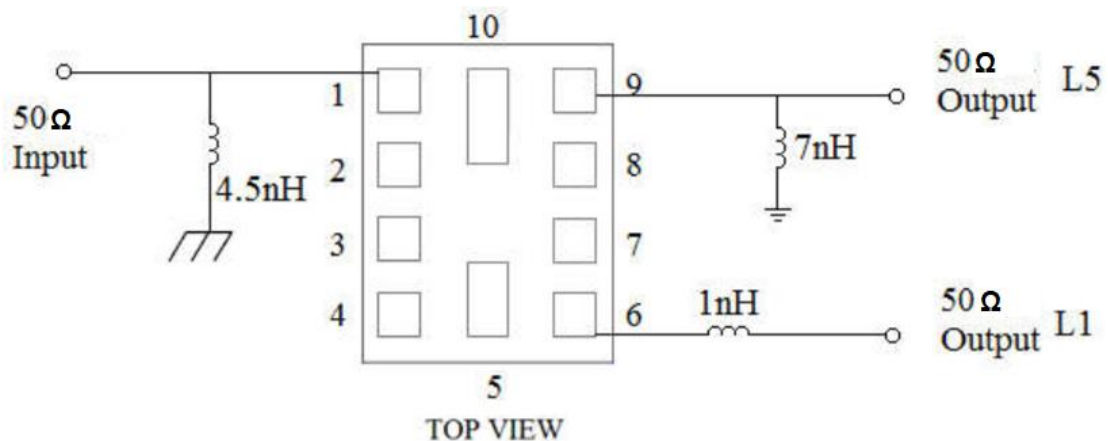


PIN CONFIGURATION

- 1: Input (L1/L5)
- 6: Output (High Freq. Filter L1)
- 9: Output (Low Freq. Filter L5)
- Other: Ground

Unit: mm

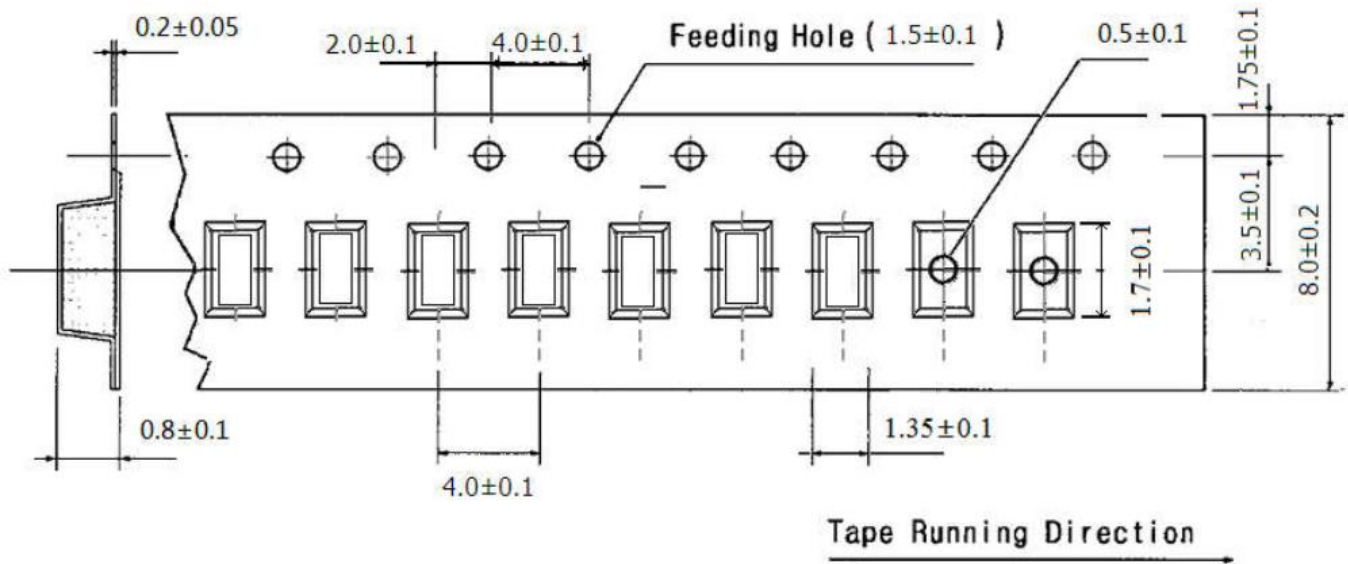
Test Circuit



Environmental

PARAMETER	VALUE
MOISTURE SENSITIVITY LEVEL	2
REACH – SVHC	Compliant
RoHS	Compliant

Tape Dimension



APPROVAL

DRAWN BY	AR, December 03, 2020
APPROVED BY	CP, December 03, 2020
REVISION	A, Initial Release
	B, AR, July 12, 2022 Updated the Current Revision Levels
	C, AR, July 16, 2022 Updated the Current Revision Levels

Raltron Electronics / RAMI Technology USA, LLC, including its affiliates, employees, agents and other persons acting on its behalf (collectively Raltron/RAMI Tech), disclaim any and all liability for any errors or inaccuracies contained in this data sheet. While Raltron/RAMI Tech has made every reasonable effort ensure the accuracy of all product information, specifications and data contained herein, Raltron/RAMI Tech does not guarantee that the information is accurate, reliable or current. The product information is provided only for reference purposes only and is subject to change, correction or revision, at any time without notice. Raltron/RAMI Tech does not assume any liability arising out of an application or use of any product described herein and disclaims any warranties expressed or implied. The user of products in such applications shall assume all risks of such use and will agree to hold Raltron/RAMI Tech, harmless against all damages.

Copyright © 2016, Raltron Electronics / RAMI Technology USA, LLC. All rights reserved. No part of this document may be reproduced in any form without the prior written permission of Raltron Electronics / RAMI Technology USA, LLC.