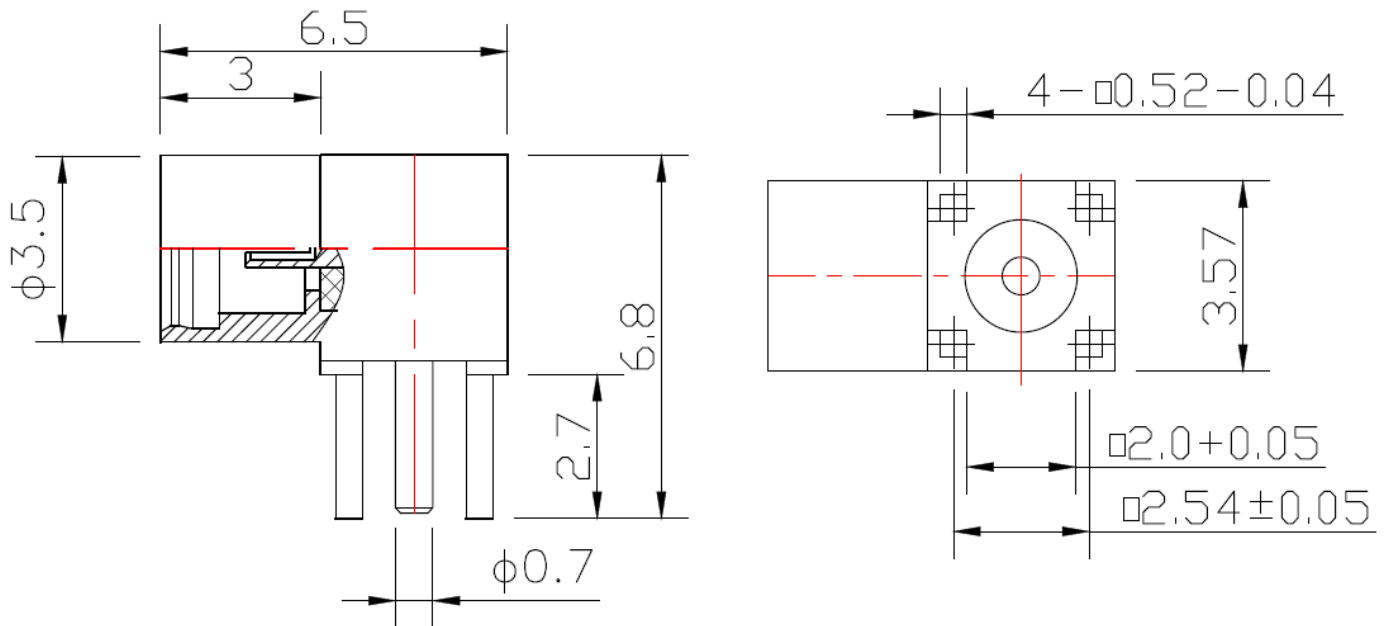




❖ ELECTRICAL SPECIFICATION

PARAMETER	VALUE	UNIT
Frequency Range	DC ~ 6	GHz
Impedance	50	Ω
VSWR, max	1.3	-
Center Contact Resistance	6	m Ω
Outer Contact Resistance	2	m Ω
Dielectric Strength	500	Vrms
Working Voltage	335	Vrms
Operating Temperature Range	-65 ~ +165	$^{\circ}\text{C}$
Neutral Salt Spray	48	h

❖ DIMENSIONS



DESCRIPTION	MATERIAL	FINISH
BODY	BRASS	GOLD
CENTER CONTACT	BERYLLIUM	GOLD
INSULATOR	PTFE	-

				 <small>A RAMI TECHNOLOGY Company</small>	
Rev	Change	Date	Name	MMCX FEMALE RIGHT ANGLE TO PCB CONNECTOR Part Number RCN-5F-KWE065-LH-001	
Projection		Date	Name		
Scale		Date	Name		
 Dimensions in mm		Drawn 03.26.2024 AR Checked 03.26.2024 CP Approved 03.26.2024 CP		A	