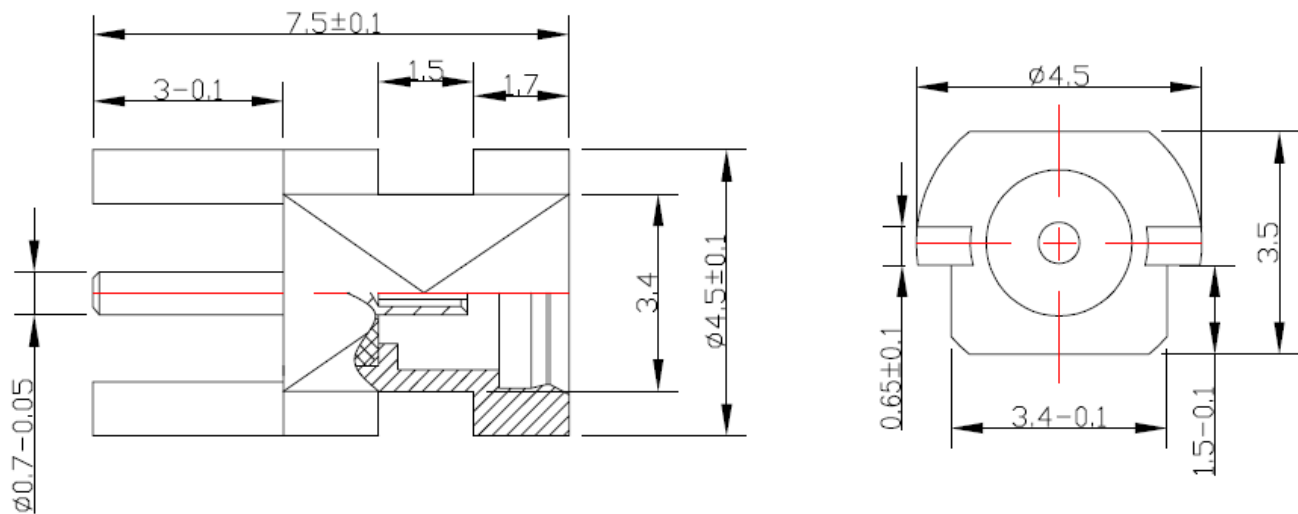



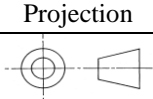
❖ ELECTRICAL SPECIFICATION

PARAMETER	VALUE	UNIT
Frequency Range	DC ~ 6	GHz
Impedance	50	Ω
VSWR, max	1.25	-
Durability	500	cycles
Operating Temperature Range	-65 ~ +165	$^{\circ}\text{C}$
Neutral Salt Spray	48	h

❖ DIMENSIONS



DESCRIPTION	MATERIAL	FINISH
BODY	BRASS	GOLD
CENTER CONTACT	PHOSPHOR BRONZE	GOLD
INSULATOR	PTFE	-

					 A RAMI TECHNOLOGY Company
Rev	Change	Date	Name		
Projection		Scale	Date	Name	
		--	Drawn	03.26.2024	
			Checked	03.26.2024	CP
			Approved	03.26.2024	CP
Dimensions in mm					Description MMCX FEMALE TO PCB CONNECTOR
					Part Number RCN-5F-KEF075C-LH-001
					A