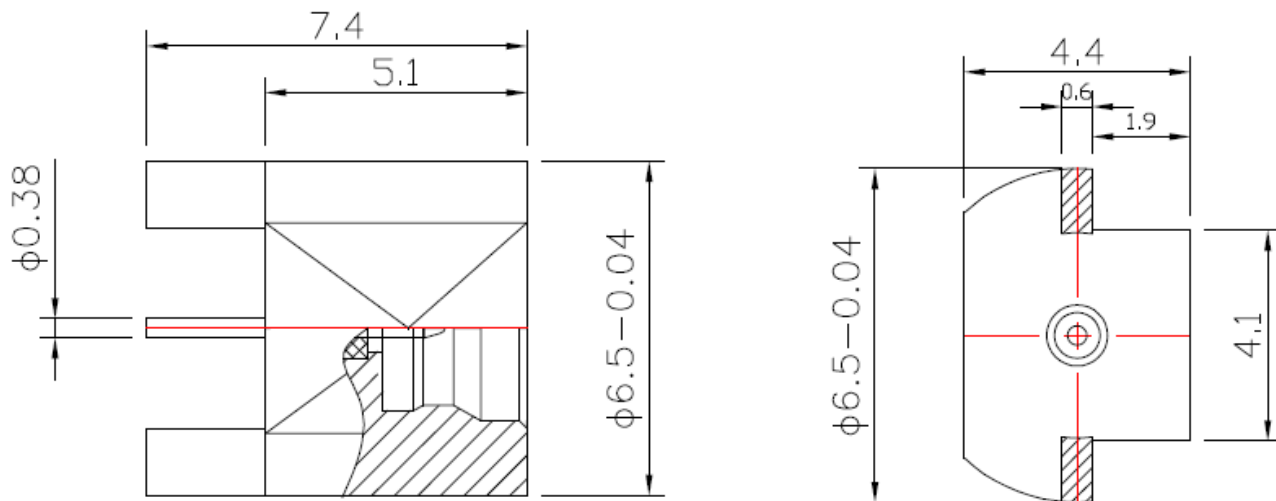




## ❖ ELECTRICAL SPECIFICATION

PARAMETER	VALUE	UNIT
Frequency Range	DC ~ 6	GHz
Impedance	50	$\Omega$
VSWR, max	1.25	-
Durability	500	cycles
Operating Temperature Range	-65 ~ +165	$^{\circ}\text{C}$
Neutral Salt Spray	48	h

## ❖ DIMENSIONS



DESCRIPTION	MATERIAL	FINISH
BODY	BRASS	GOLD
CENTER CONTACT	BRASS	GOLD
INSULATOR	PTFE	-

					 A RAMI TECHNOLOGY Company
Rev	Change	Date	Name	Description	
				<b>SMP MALE TO PCB CONNECTOR</b>	
Projection		Scale	Date	Name	Part Number
		--	Drawn	03.29.2024	AR
			Checked	03.29.2024	CP
			Approved	03.29.2024	CP
Dimensions in mm					<b>RCN-33M-JEF074-LH-001</b>
					<b>A</b>