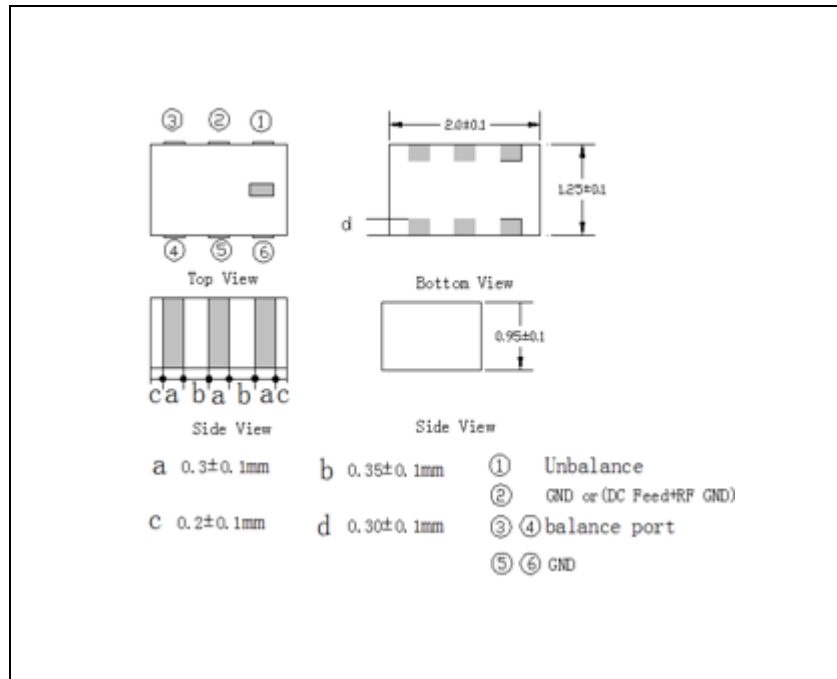


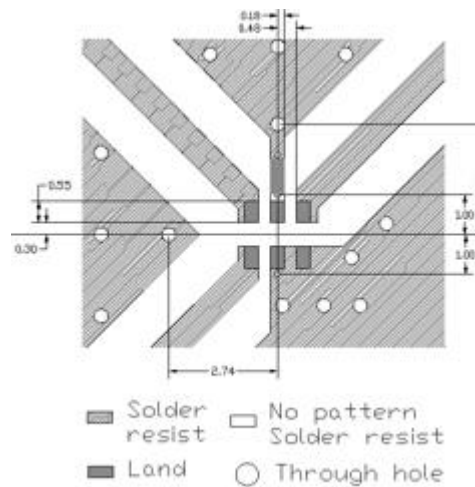
ELECTRICAL SPECIFICATION

PARAMETER	SPECIFICATIONS	UNIT
Frequency Range	2400 ~2500	MHz
Insertion Loss,max	1.5	dB
Common Mode Attenuation @ 4800~5000 MHz, min	20	dB
Differential Mode Attenuation, min	@4800~5000 MHz	20
	@7200~7500 MHz	20
Unbalanced Impedance	50	Ω
Balanced Impedance	Impedance match to AT86RF230/231 & ATmega 128RFA1	-
Return Loss, max	9.5	dB
Phase Difference	180 ± 10	$^{\circ}$
Amplitude Difference, max	2.0	dB

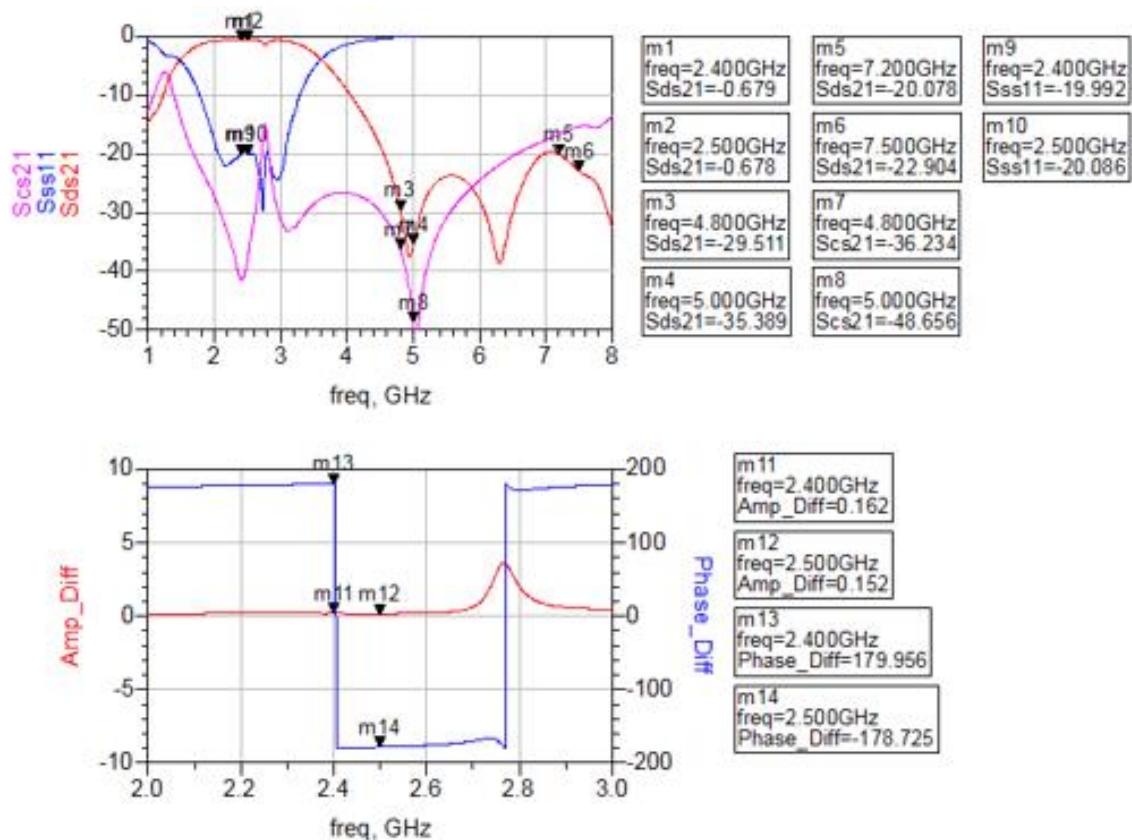
MECHANICAL SPECIFICATION



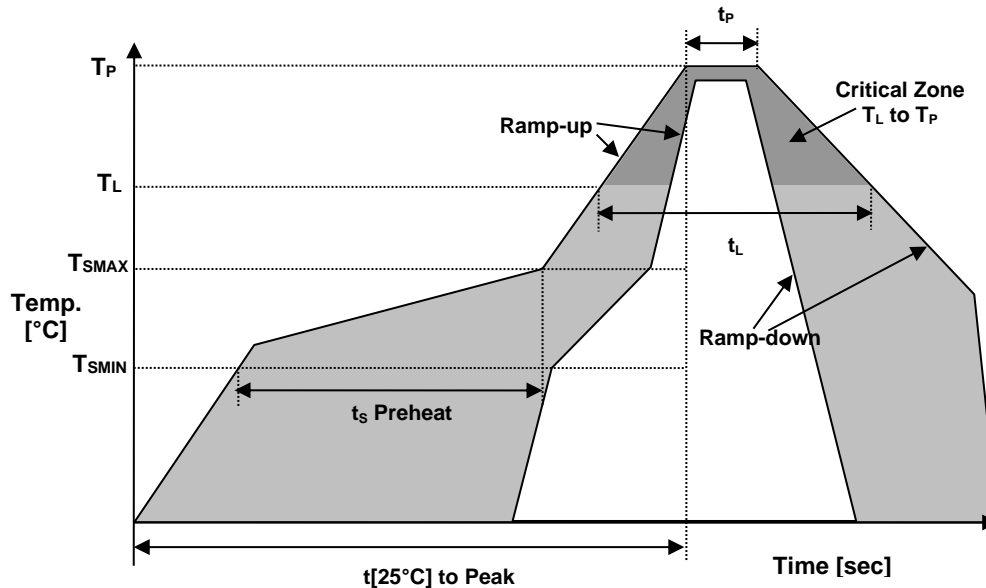
SOLDER LAND PATTERN



SOLDER LAND PATTERN



REFLOW PROFILE



Reflow profile		
Temperature Min Preheat	T_{SMIN}	150°C
Temperature Max Preheat	T_{SMAX}	200°C
Time (T_{SMIN} to T_{SMAX})	t_s	60-180 sec.
Temperature	T_L	217°C
Peak Temperature	T_P	260°C
Ramp-up rate	R_{UP}	3°C/sec max.
Ramp-down rate	R_{DOWN}	6°C/sec max.
Time within 5°C of Peak Temperature	t_p	10 sec.
Time $t[25^\circ\text{C}]$ to Peak Temperature	$t[25^\circ\text{C}] \text{ to Peak}$	480 sec.
Time	t_L	60-150 sec.

ENVIRONMENTAL

PARAMETER	VALUE
MOISTURE SENSITIVITY LEVEL	1
RoHS2	6/6 COMPLIANT & LEAD FREE
REACH-SVHC	COMPLIANT
HALOGEN-FREE	COMPLIANT
TERMINATION FINISH	Sn



APPROVAL

RALTRON	
DRAWN BY:	LP, July 25, 2016
APPROVED BY:	CP, July 25, 2016
REVISION:	A, Initial Release

Raltron Electronics/RAMI Technology USA, LLC, including its affiliates, employees, agents and other persons acting on its behalf (collectively Raltron/RAMI Tech), disclaim any and all liability for any errors or inaccuracies contained in this data sheet. While Raltron/RAMI Tech has made every reasonable effort to ensure the accuracy of all product information, specifications and data contained herein, Raltron/RAMI Tech does not guarantee that the information is accurate, reliable or current. The product information is provided for reference purposes only and is subject to change, correction or revision, at any time without notice. Raltron/RAMI Tech does not assume any liability arising out of an application or use of any product described herein and disclaims any warranties expressed or implied. The user of products in such applications shall assume all risks of such use and will agree to hold Raltron/RAMI Tech, harmless against all damages.