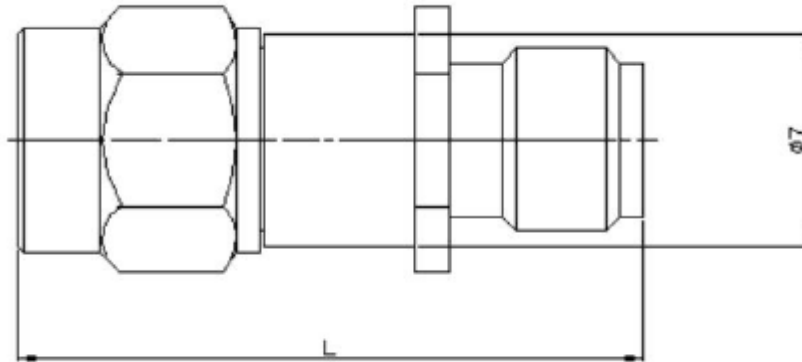


## ❖ ELECTRICAL SPECIFICATION

PARAMETER		VALUE	UNIT
Frequency Range		DC ~ 26.5	GHz
Impedance		50	$\Omega$
Power Handling, min		2	W
Connector		SMA	dB
Weight	1-10 dB	4	g
	20-40 dB	5	G
Dimensions		$\varnothing 7 \times L = 21.8$ 20-40dB $\varnothing 7 \times L = 25$	mm
Operating Temperature Range		-55~ +125	$^{\circ}\text{C}$


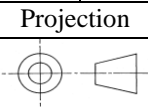


## ❖ DIMENSIONS



DESCRIPTION	MATERIAL	FINISHED
CONNECTOR MATERIAL	STAINLESS STEEL	
SURFACE TREATMENT	STAINLESS STEEL	PASSIVATED

FREQUENCY RANGE	ATTENUATION & ACCURACY	VSWR, max
	20 dB	
DC ~ 26.5 GHz	-0.5 $\pm$ .1.2	1.40

						
Rev	Change	Date	Name			Description <b>COAXIAL FIXED ATTENUATOR, 2W, DC-26.5GHz</b>
Projection		Scale	Date			
		--	Drawn	03.25.2024	AR	Part Number <b>RTA-12-2W265-ML-20</b>
			Checked	03.25.2024	CP	
			Approved	03.25.2024	CP	
Dimensions in mm						A