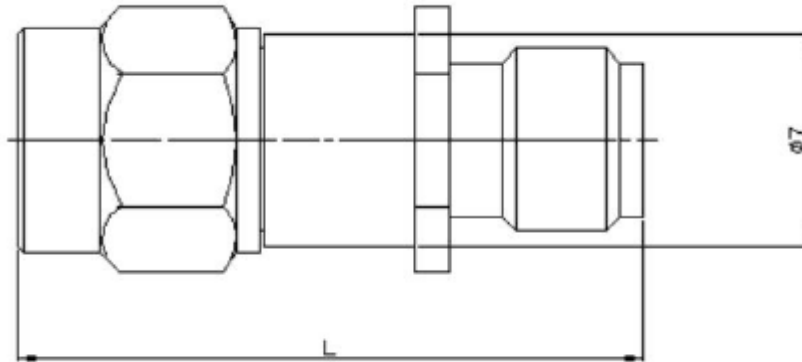


❖ ELECTRICAL SPECIFICATION

PARAMETER		VALUE	UNIT
Frequency Range		DC ~ 26.5	GHz
Impedance		50	Ω
Power Handling, min		2	W
Connector		SMA	dB
Weight	1-10 dB	4	g
	20-40 dB	5	G
Dimensions		$\varnothing 7 \times L = 21.8$ 20-40dB $\varnothing 7 \times L = 25$	mm
Operating Temperature Range		-55~ +125	$^{\circ}\text{C}$



❖ DIMENSIONS



DESCRIPTION	MATERIAL	FINISHED
CONNECTOR MATERIAL	STAINLESS STEEL	
SURFACE TREATMENT	STAINLESS STEEL	PASSIVATED

FREQUENCY RANGE	ATTENUATION & ACCURACY		VSWR, max
	2 dB		
DC ~ 26.5 GHz	-0.5 \pm .1.2		1.40

Rev	Change	Date	Name			Description COAXIAL FIXED ATTENUATOR, 2W, DC-26.5GHz	
Projection		Scale	Date				
		--	Drawn	03.25.2024	AR	Part Number RTA-12-2W265-ML-2	
			Checked	03.25.2024	CP		
			Approved	03.25.2024	CP		
Dimensions in mm						A	