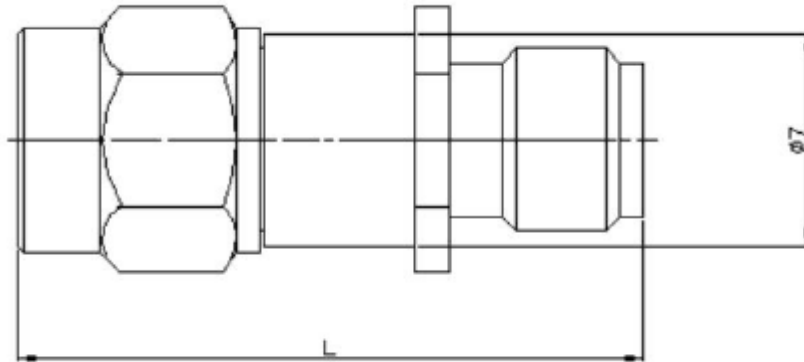


❖ ELECTRICAL SPECIFICATION

PARAMETER		VALUE	UNIT
Frequency Range		DC ~ 18	GHz
Impedance		50	Ω
Power Handling, min		2	W
Connector		SMA	dB
Weight	1-12 dB	4	g
	15-40 dB	5	g
Dimensions	1-12 dB	$\varnothing 7 \times L = 21.8$	mm
	15-40 dB	$\varnothing 7 \times L = 25$	mm
Operating Temperature Range		-55~ +125	$^{\circ}\text{C}$


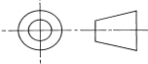


❖ DIMENSIONS



DESCRIPTION	MATERIAL	FINISHED
CONNECTOR MATERIAL	STAINLESS STEEL	
SURFACE TREATMENT	STAINLESS STEEL	PASSIVATED

FREQUENCY RANGE	ATTENUATION & ACCURACY		VSWR, max
	6 dB		
DC ~ 18 GHz	-1.0 \pm 1.0		1.35

						
Rev	Change	Date	Name			Description COAXIAL FIXED ATTENUATOR, 2W, DC-18GHz
Projection		Scale	Date			
		--	Drawn	03.25.2024	AR	Part Number RTA-12-2W18-ML-6
Dimensions in mm			Checked	03.25.2024	CP	
			Approved	03.25.2024	CP	