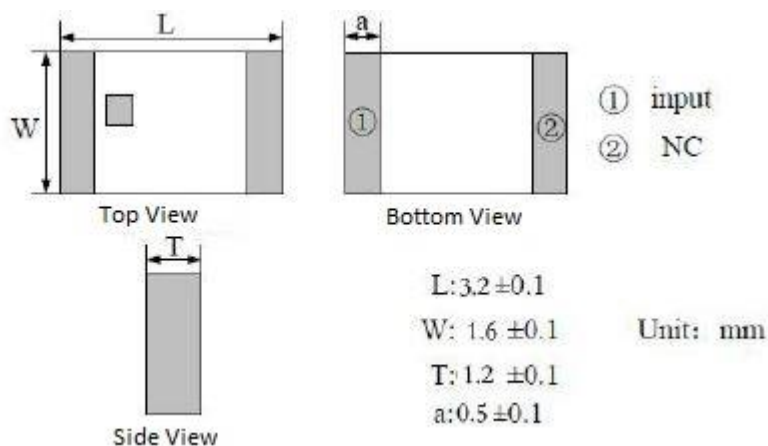
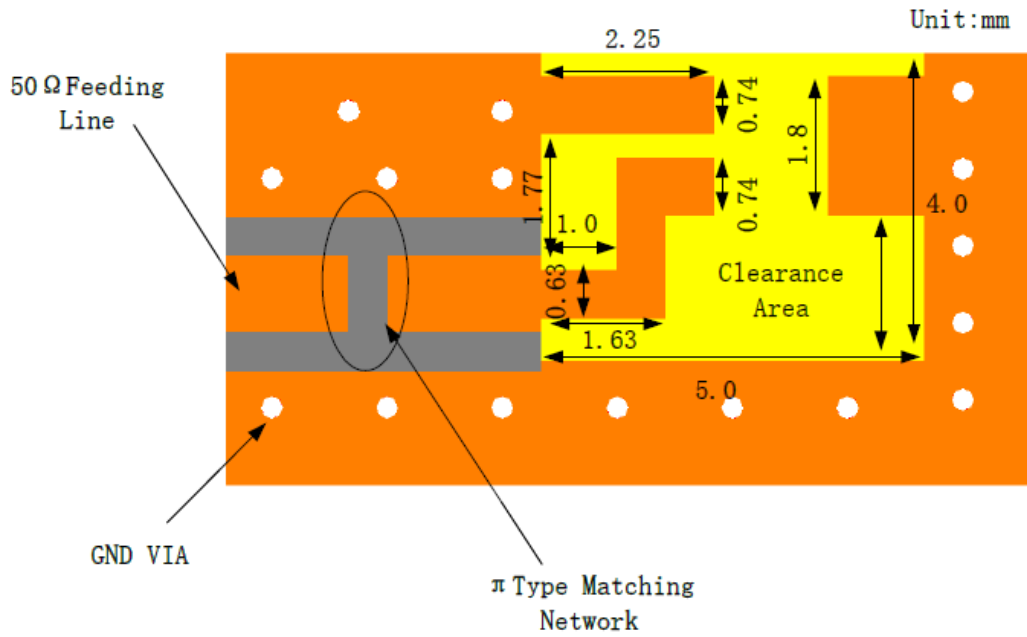


ELECTRICAL SPECIFICATION

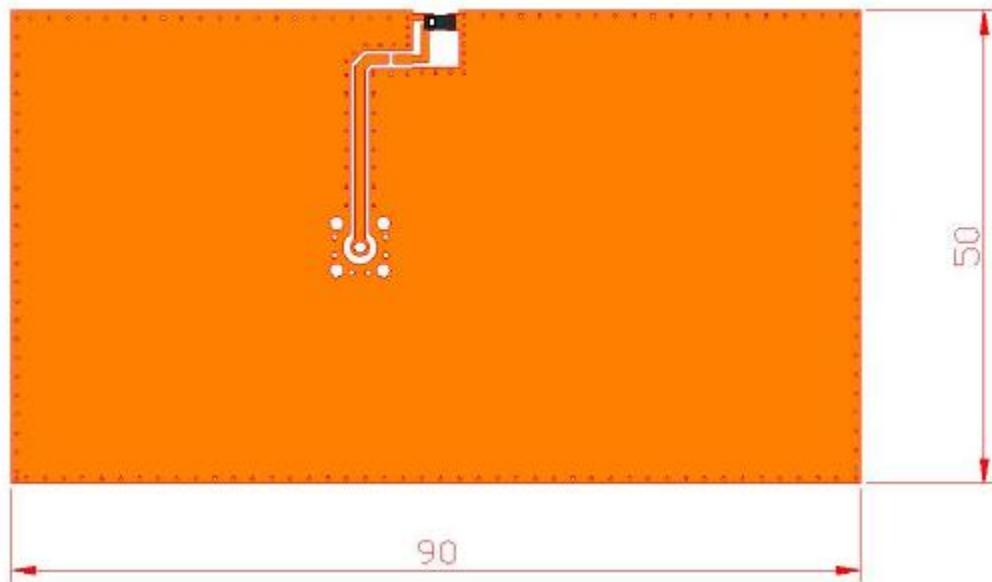
PARAMETERS	SPECIFICATIONS	UNIT
Center Frequency (no matching)	2545	MHz
Center Frequency (after matching)	2450	MHz
Band Width, typ	80	MHz
Peak Gain	6.62	dBi
Impedance	50	Ω
VSWR, max	2.0	-
Polarization	Linear	-
Azimuth Beam Width	Omni-directional	-
Operating Temperature Range	-40 ~ +85	$^{\circ}\text{C}$
Storage Temperature Range	-40 ~ +85	$^{\circ}\text{C}$

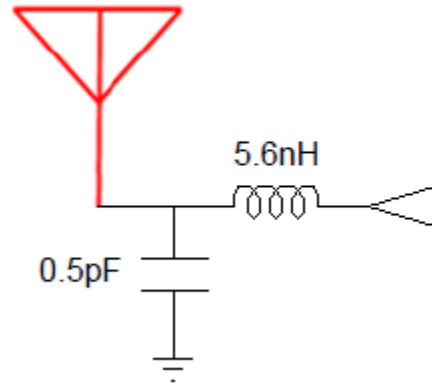
MECHANICAL SPECIFICATION



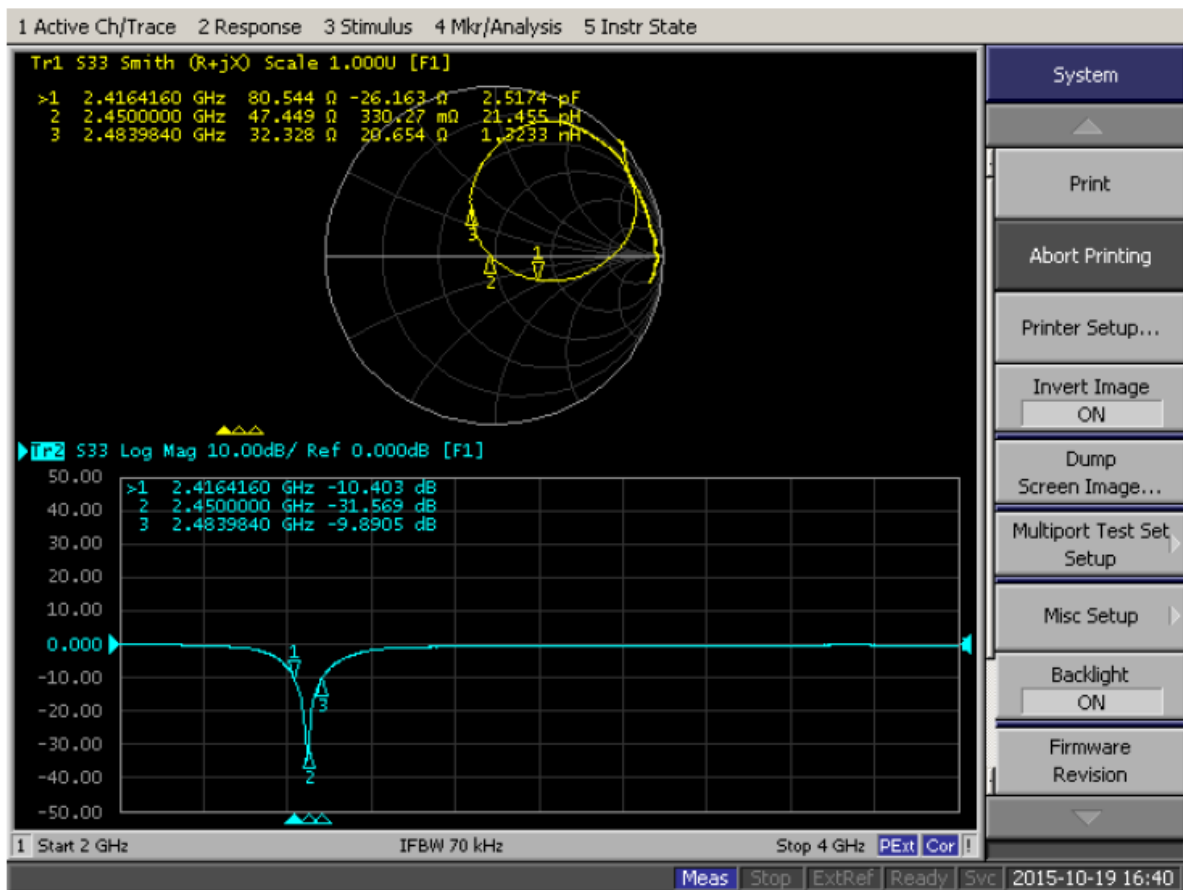


■ EVALUATION BOARD AND MATCHING CIRCUIT

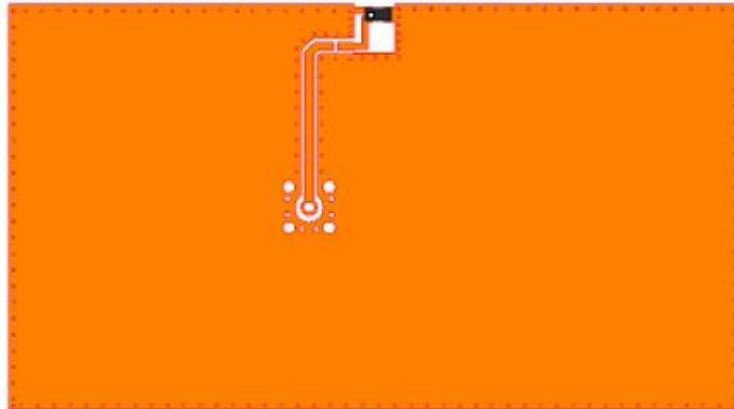
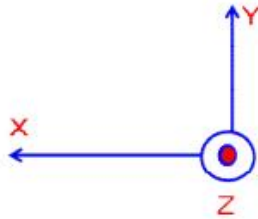




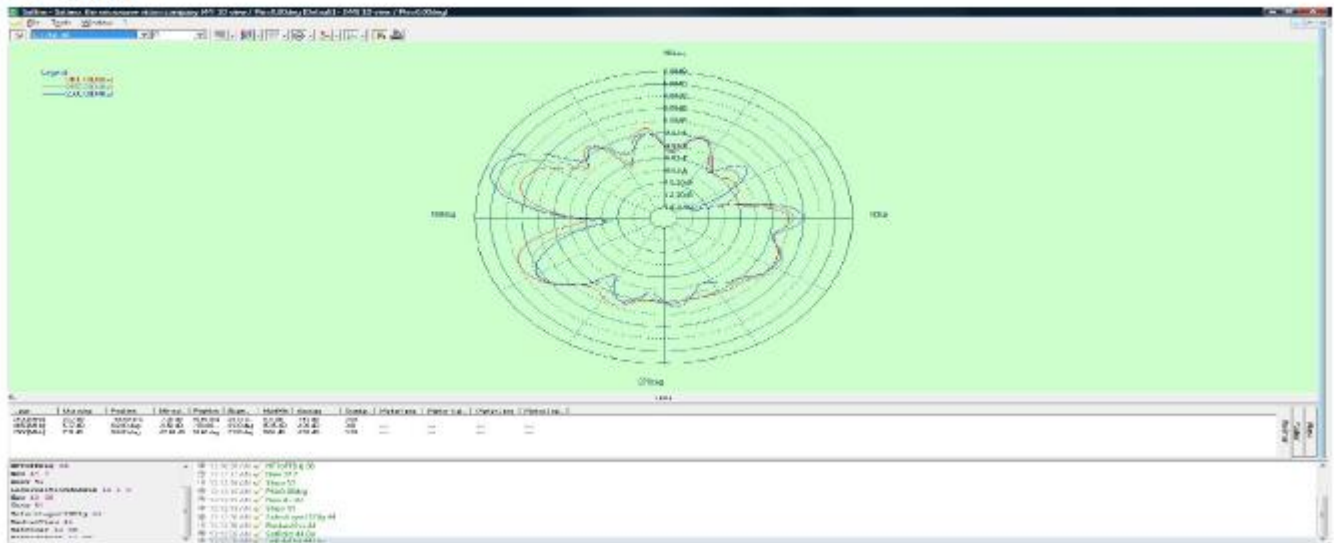
■ FREQUENCY CHARACTERISTICS



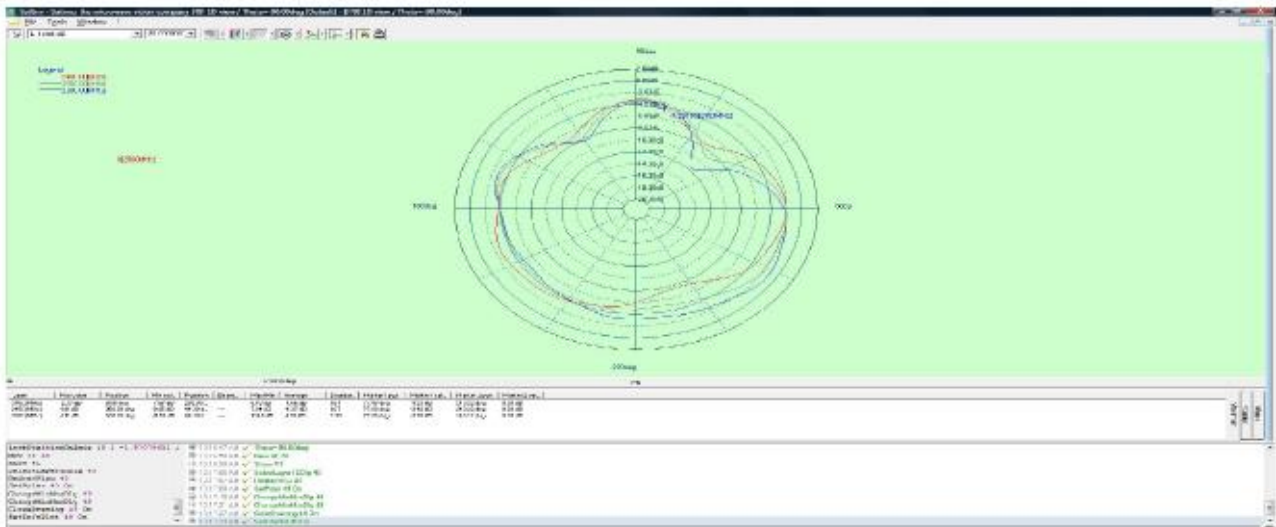
RADIATION PATTERN



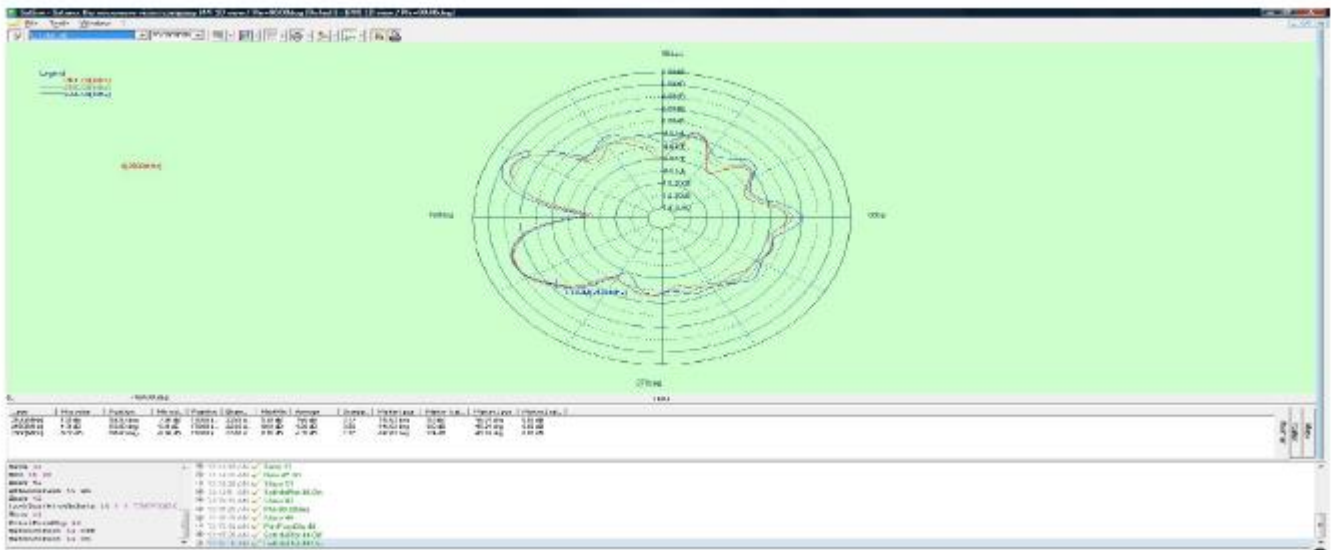
X-Z Plane

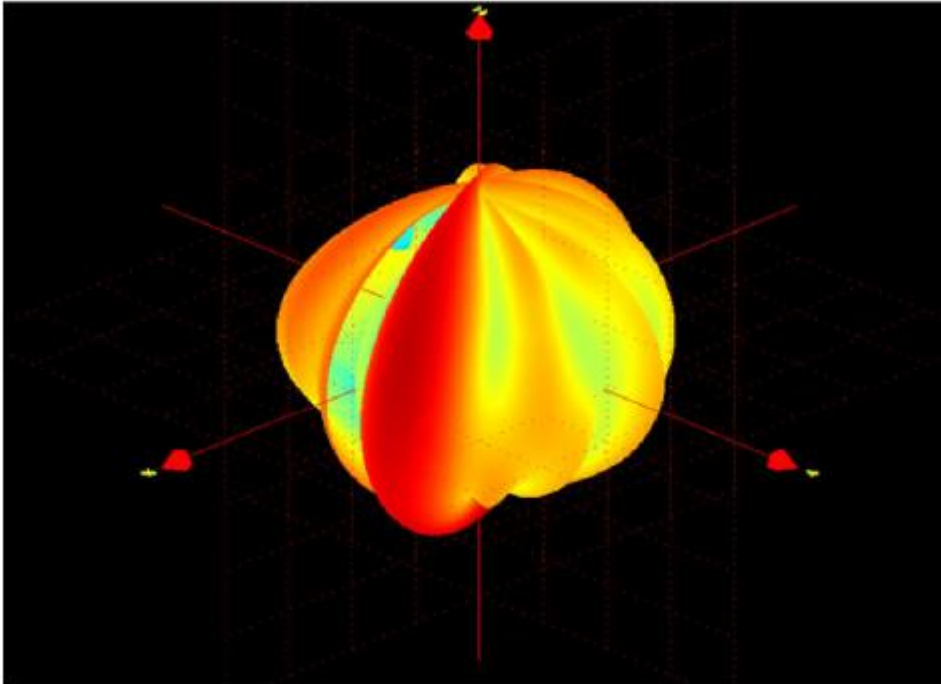


Y-Z Plane



X-Y Plane





PARAMETERS	VALUES			UNIT
Frequency	2400	2450	2500	MHz
Average Gain	-1.54	-1.20	-1.125	dBi
Peak Gain	4.81	6.62	5.53	dBi
Efficiency	65.5	72.9	70.8	%

• APPROVAL

RALTRON	
DRAWN BY:	LP, March 23, 2016
APPROVED BY:	CP, March 23, 2016
REVISION:	A, Initial Release B, CP April 18, 2016 Corrected Bandwidth to 80MHz



A **RAMI TECHNOLOGY** Company

CHIP ANTENNA

Page 7 of 7

RCA-W2-P-3216-A29-G