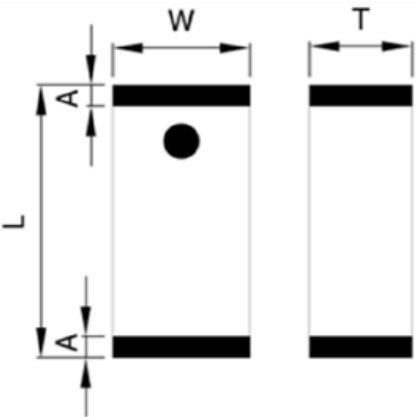


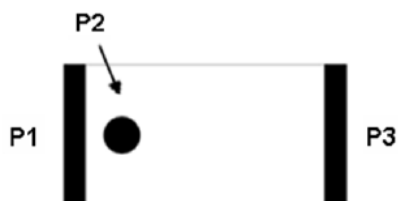
ELECTRICAL SPECIFICATION

PARAMETERS	VALUE	UNIT
Frequency Range	6240 ~ 8500	MHz
Center Frequency	7370	MHz
VSWR, max	2.0	-
Gain	3 - 4.5	dBi
Efficiency	70 - 80	%
Power Capacity, max	3	W
Input Power, max (for 5 min.)	5	W
Polarization	Linear	-
Azimuth Beamwidth	Omni-Directional	-
Operating Temperature Range	-40 ~ +85	°C

MECHANICAL SPECIFICATION

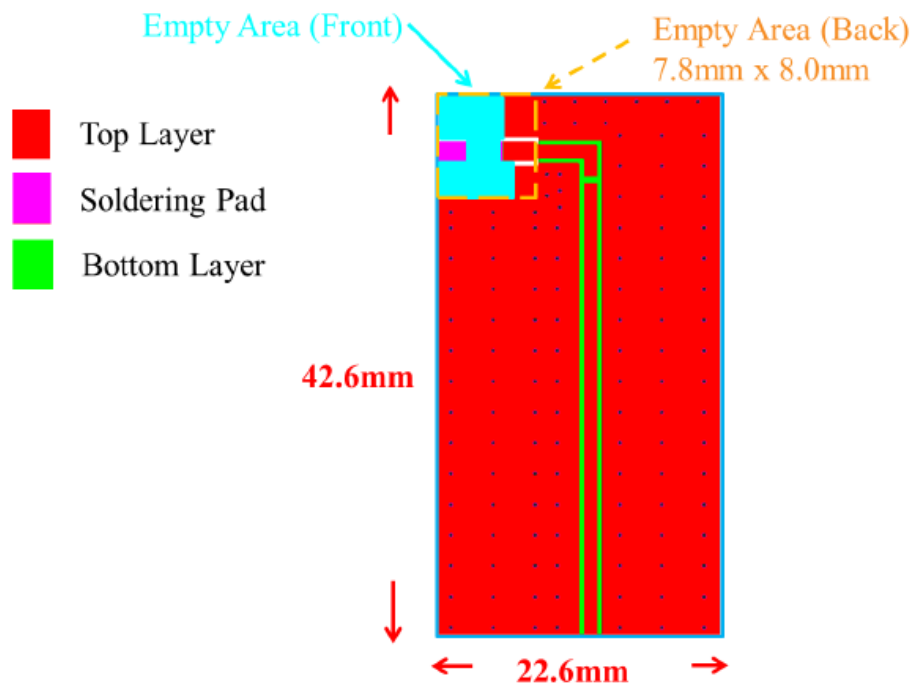
Figure	Symbol	Dimension (mm)
	L	3.20 ± 0.20
	W	1.60 ± 0.10
	T	1.10 ± 0.10
	A	0.25 ± 0.15

CONSTRUCTION

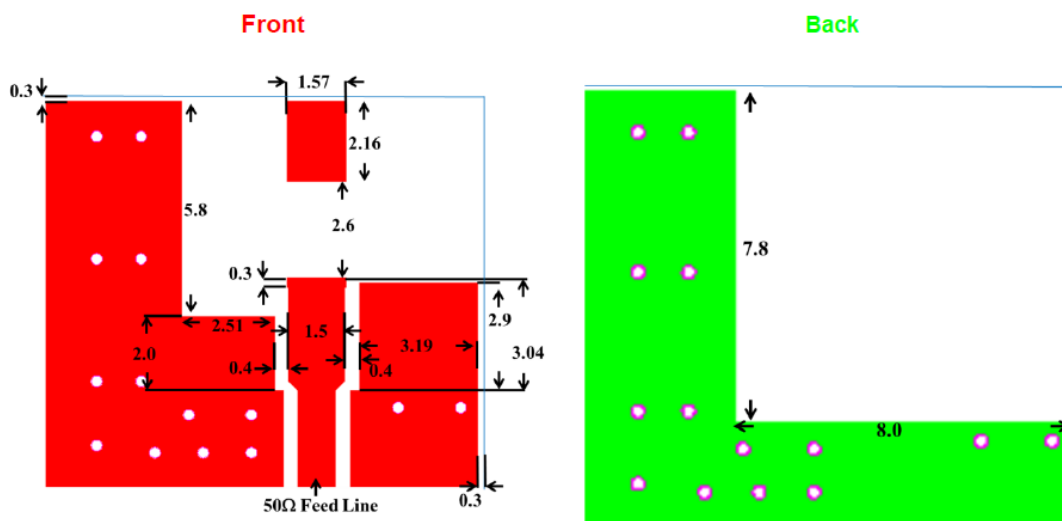


PIN	Connection
1	Feeding
2	Identification Mark
3	Soldering terminal

■ SOLDER LAND PATTERN DESIGN



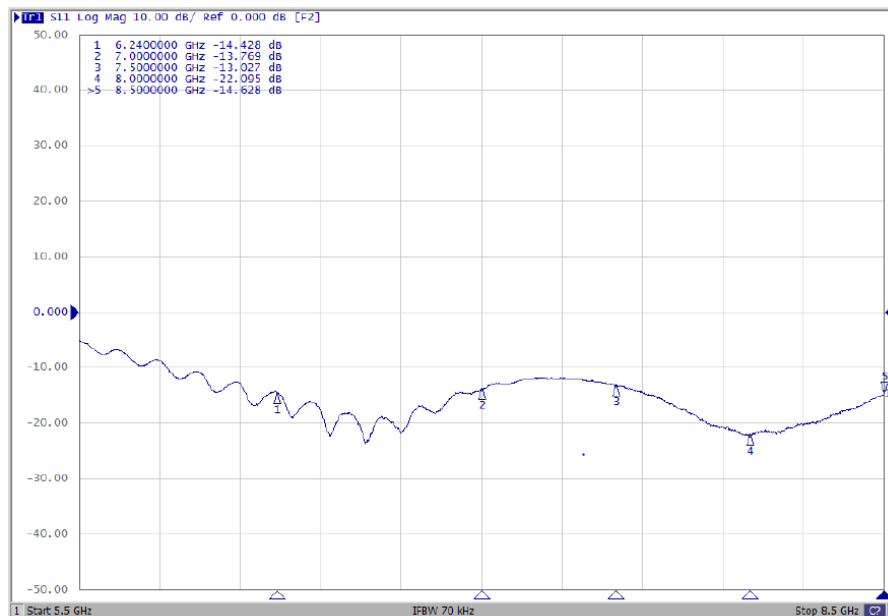
Antenna on Test Board (Thickness 0.8 mm)



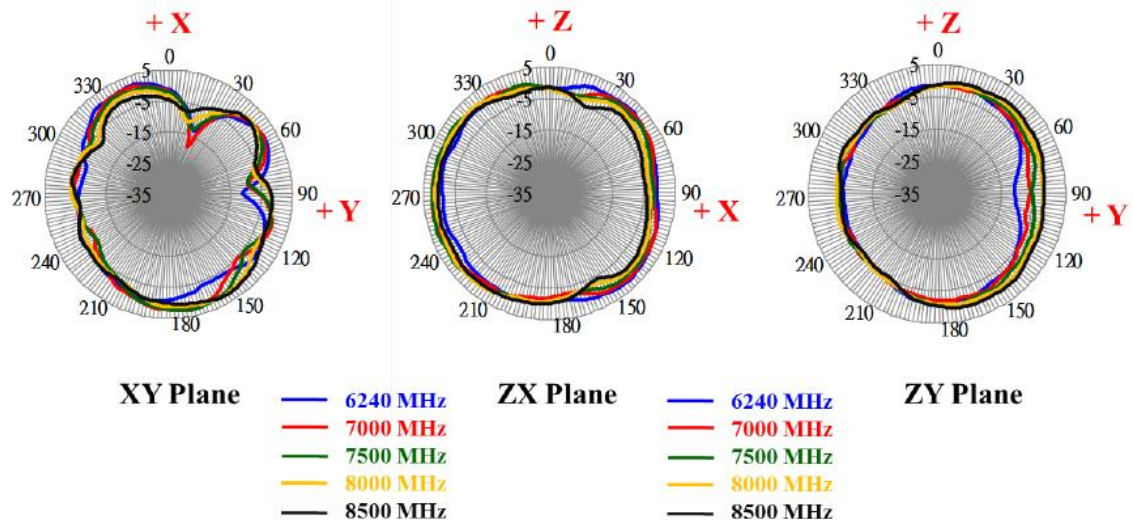
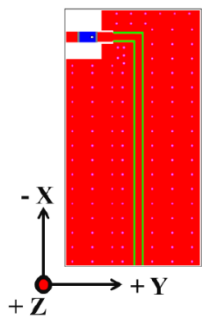
Unit: mm

FREQUENCY CHARACTERISTICS

Antenna S11 on Test Board



RADIATION PATTERN



APPROVAL

RALTRON	
DRAWN BY:	AR, July 27, 2020
APPROVED BY:	CP, July 27, 2020
REVISION:	A, Initial Release

Raltron Electronics/RAMI Technology USA, LLC, including its affiliates, employees, agents and other persons acting on its behalf (collectively Raltron/RAMI Tech), disclaim any and all liability for any errors or inaccuracies contained in this data sheet. While Raltron/RAMI Tech has made every reasonable effort to ensure the accuracy of all product information, specifications and data contained herein, Raltron/RAMI Tech does not guarantee that the information is accurate, reliable or current. The product information is provided for reference purposes only and is subject to change, correction or revision, at any time without notice. Raltron/RAMI Tech does not assume any liability arising out of an application or use of any product described herein and disclaims any warranties expressed or implied. The user of products in such applications shall assume all risks of such use and will agree to hold Raltron/RAMI Tech, harmless against all damages.

Copyright © 2016, Raltron Electronics / RAMI Technology USA, LLC. All rights reserved. No part of this document may be reproduced in any form without the prior written permission of Raltron Electronics / RAMI Technology USA, LLC