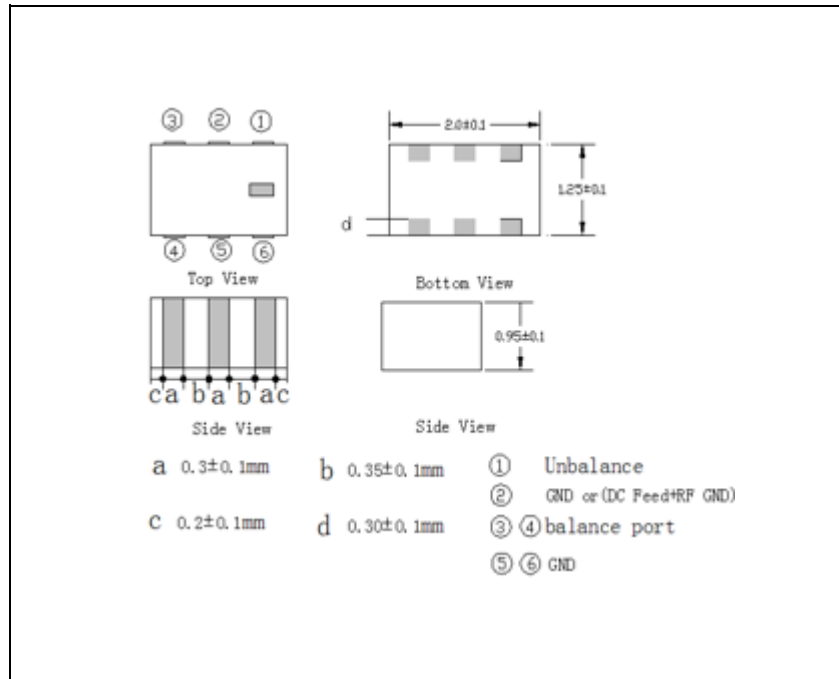


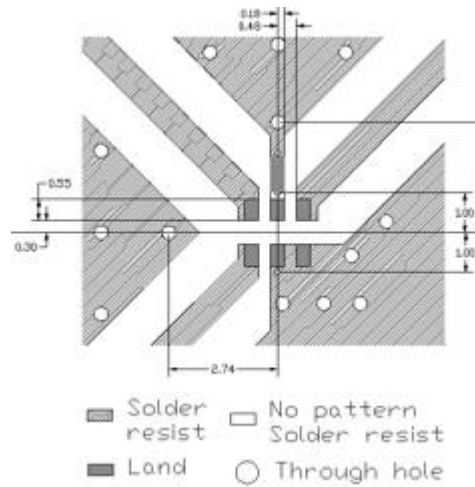
■ ELECTRICAL SPECIFICATION

PARAMETER	SPECIFICATIONS	UNIT
Frequency Range	2400 ~2500	MHz
Insertion Loss,max	1.5	dB
Common Mode Attenuation @ 4800~5000 MHz, min	20	dB
Differential Mode Attenuation, min	@4800~5000 MHz	20
	@7200~7500 MHz	20
Unbalanced Impedance	50	Ω
Balanced Impedance	Impedance match to AT86RF230/231 & ATmega 128RFA1	-
Return Loss, max	9.5	dB
Phase Difference	180 ± 10	$^{\circ}$
Amplitude Difference, max	2.0	dB

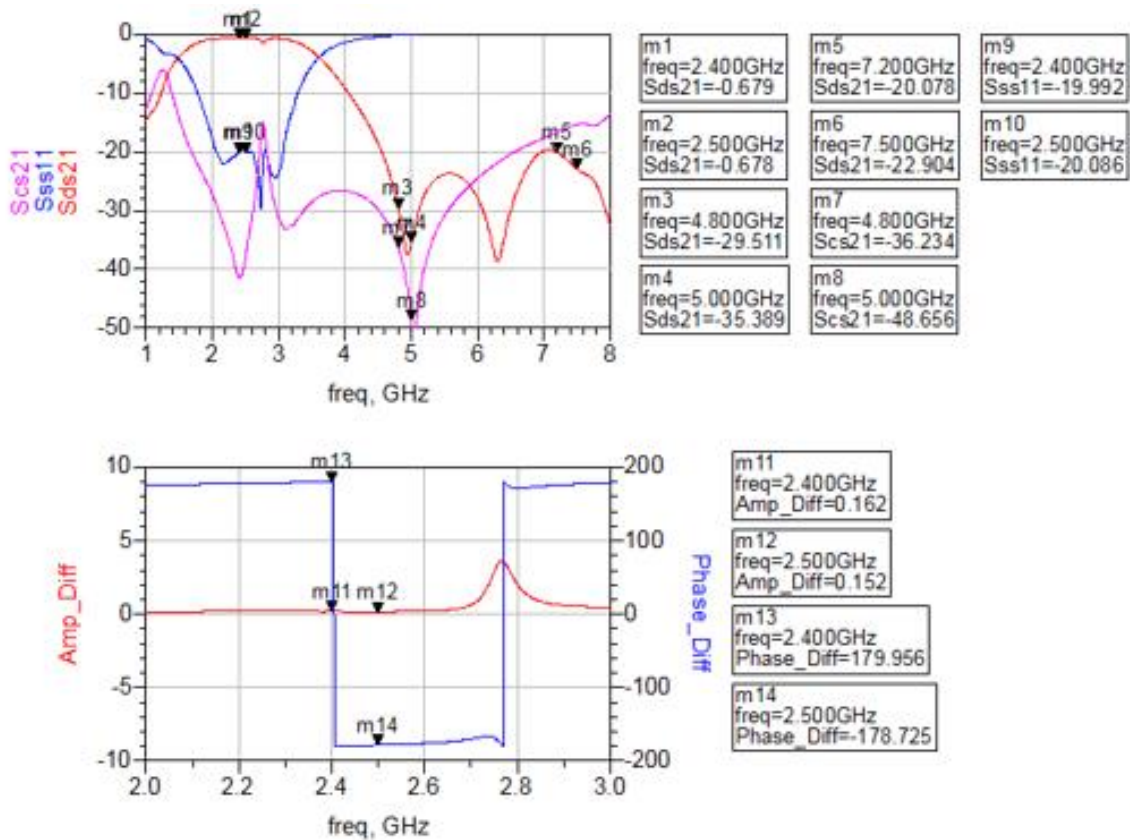
■ MECHANICAL SPECIFICATION



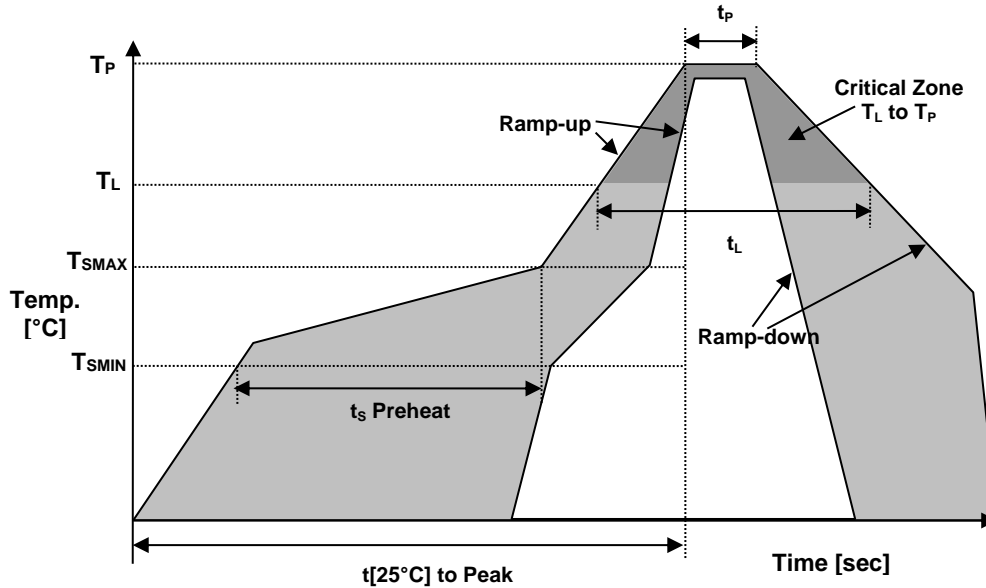
■ SOLDER LAND PATTERN



■ SOLDER LAND PATTERN



REFLOW PROFILE



Reflow profile		
Temperature Min Preheat	T_{SMIN}	150°C
Temperature Max Preheat	T_{SMAX}	200°C
Time (T_{SMIN} to T_{SMAX})	t_s	60-180 sec.
Temperature	T_L	217°C
Peak Temperature	T_P	260°C
Ramp-up rate	R_{UP}	3°C/sec max.
Ramp-down rate	R_{DOWN}	6°C/sec max.
Time within 5°C of Peak Temperature	t_p	10 sec.
Time $t_{[25^\circ C]}$ to Peak Temperature	$t_{[25^\circ C]}$ to Peak	480 sec.
Time	t_L	60-150 sec.

ENVIRONMENTAL

PARAMETER	VALUE
MOISTURE SENSITIVITY LEVEL	1
RoHS2	6/6 COMPLIANT & LEAD FREE
REACH-SVHC	COMPLIANT
HALOGEN-FREE	COMPLIANT
TERMINATION FINISH	Sn



March, 2017