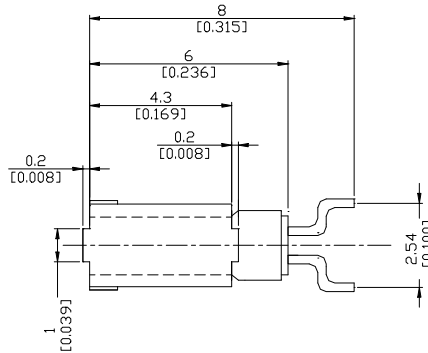
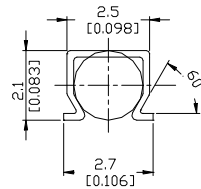


PACKAGE DIMENSIONS

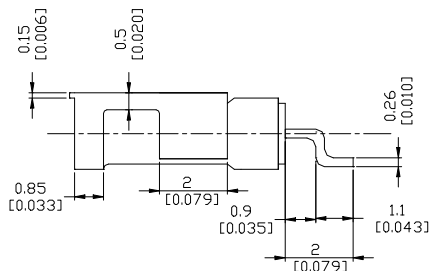
TOP VIEW



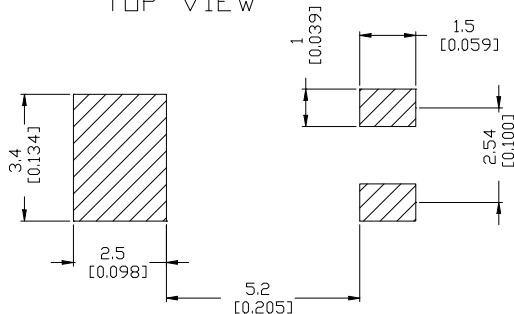
FRONT VIEW



SIDE VIEW



RECOMMENDED LAND PATTERN TOP VIEW



REVISIONS			
LTR		DATE	APPROVED
A	INITIAL RELEASE	16 JUL 07	

SPECIFICATIONS

NOMINAL FREQUENCY: 32.768 KHZ
 FREQUENCY TOLERANCE: ±20 PPM MAXIMUM
 TURNOVER TEMPERATURE: +25°C ±5°C
 TEMPERATURE CHARACTERISTIC, K (NOTE 1): -0.035 PPM/°C² (TYPICAL)
 QUALITY FACTOR: 60,000 (TYPICAL)
 NOMINAL LOAD CAPACITANCE: 12.5 pF
 EQUIVALENT SERIES RESISTANCE: 65K OHMS MAXIMUM
 DRIVE LEVEL: 1 uW MAXIMUM
 MOTIONAL CAPACITANCE: 2.1pF
 SHUNT CAPACITANCE: 0.9 pF TYPICAL
 CAPACITANCE RATIO: 460 (TYPICAL)
 AGING: ±3 PPM MAXIMUM FIRST YEAR
 INSULATION RESISTANCE: 500 M OHMS MINIMUM
 OPERATING TEMPERATURE RANGE: -40°C TO +85°C
 STORAGE TEMPERATURE RANGE: -55°C TO +125°C
 PACKAGE: 2mm x 6.5mm CYLINDRICAL METAL CAN WITH FORMED LEADS

SHOCK RESISTANCE: 3000g x 0.3ms x 1/2 SINEWAVE IN EACH OF THREE AXES

PACKAGING: 16mm TAPING, 8mm PITCH, 3000 UNITS PER REEL

NOTE 1: FREQUENCY DEVIATION AT TEMPERATURE T IS GIVEN AS: $\Delta f/f = k(T_0 - T)^2$, WHERE K IS PARABOLIC CURVE CONSTANT

NOTE: THIS DRAWING IS A SALES DOCUMENT FOR REFERENCE ONLY. OTHER OPTIONS ARE AVAILABLE. PLEASE CONSULT RALTRON.

CAGE CODE:

 ALL DIMENSIONS ARE IN mm/inch UNLESS OTHERWISE SPECIFIED	DRAWING TITLE:	ROHS COMPLIANT
	TUNING FORK CRYSTAL UNIT 2x6mm SMD LEAD FORM TYPE WITH CLIP REFLOW COMPATIBLE 32.768 KHZ, ±20 PPM	
	DRAWING NUMBER: R26-32.768-12.5-X-CLIP-TR-NS1	
	SCALE:	SHEET 1 OF 1