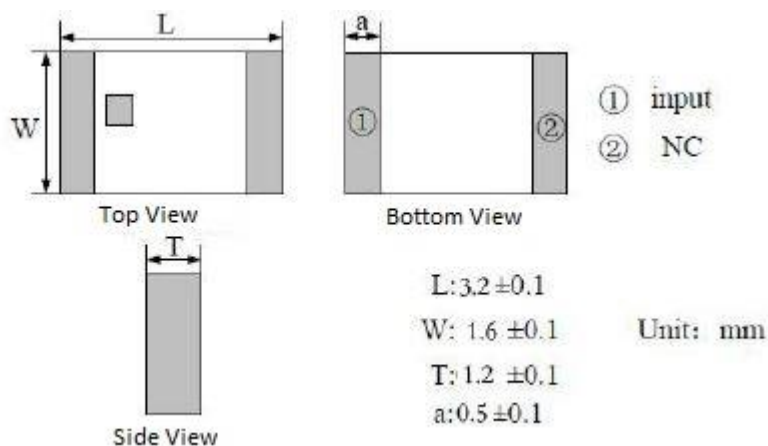
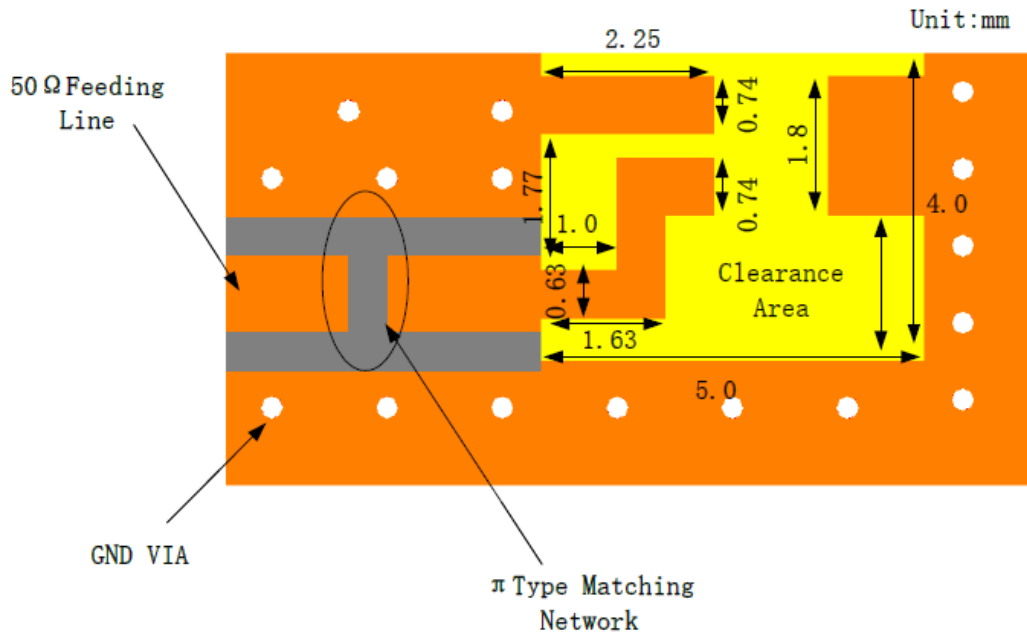


#### ELECTRICAL SPECIFICATION

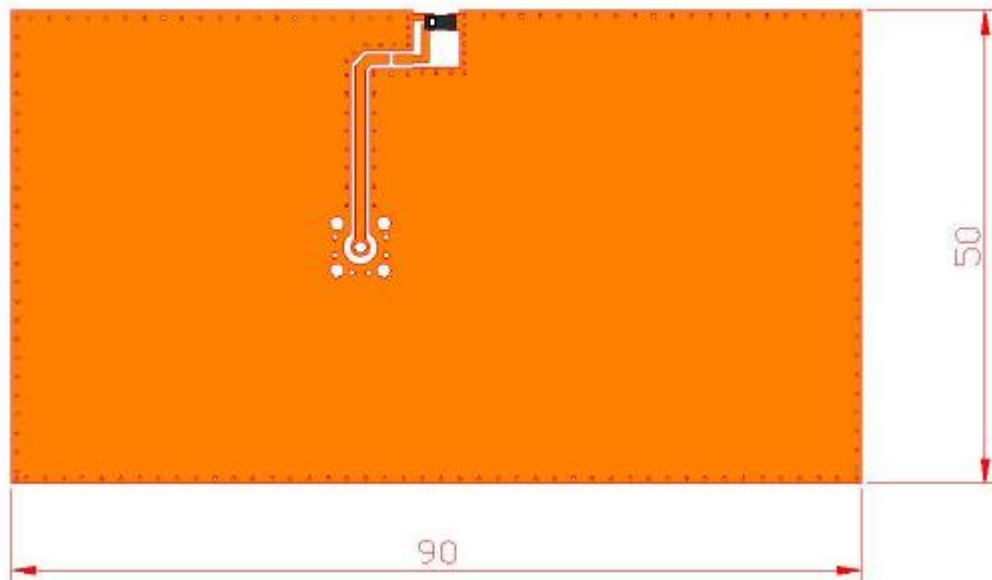
PARAMETERS	SPECIFICATIONS	UNIT
Center Frequency (no matching)	2545	MHz
Center Frequency (after matching)	2450	MHz
Band Width, typ	800	MHz
Peak Gain	6.62	dBi
Impedance	50	$\Omega$
VSWR, max	2.0	-
Polarization	Linear	-
Azimuth Beam Width	Omni-directional	-
Operating Temperature Range	-40 ~ +85	$^{\circ}\text{C}$
Storage Temperature Range	-40 ~ +85	$^{\circ}\text{C}$

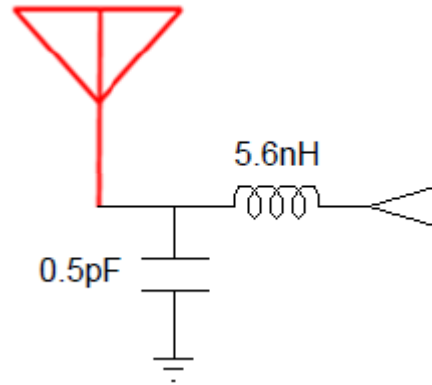
#### MECHANICAL SPECIFICATION



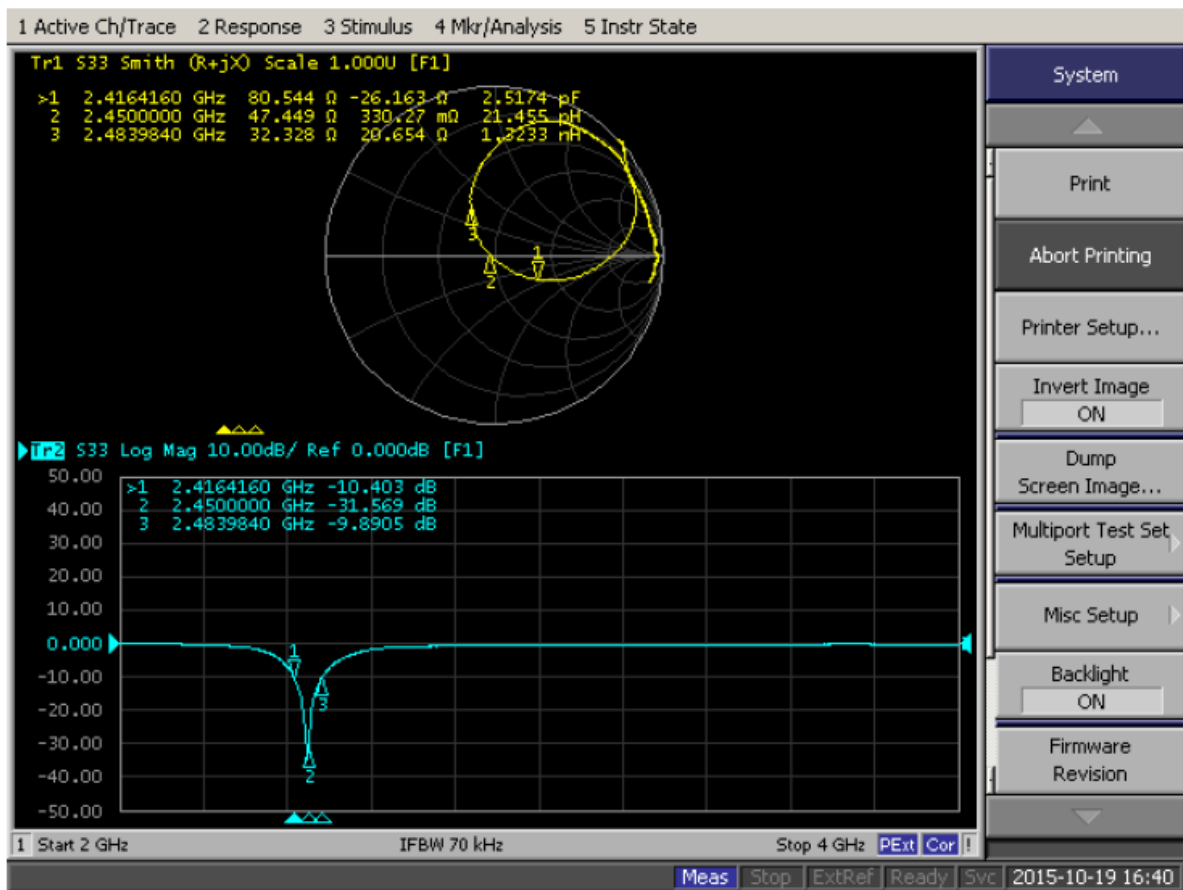


#### ■ EVALUATION BOARD AND MATCHING CIRCUIT

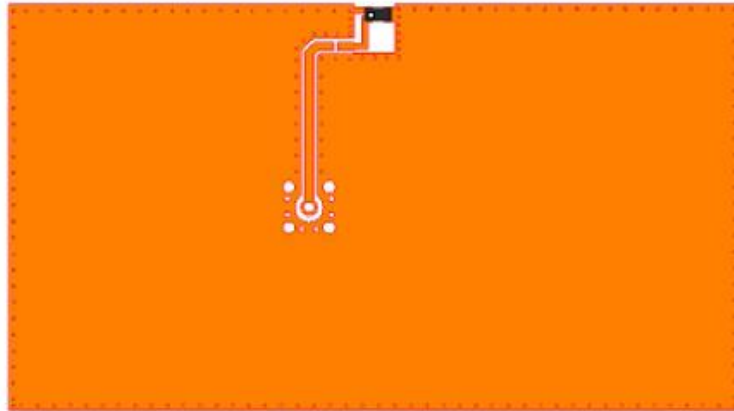
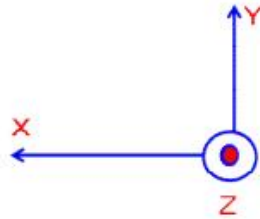




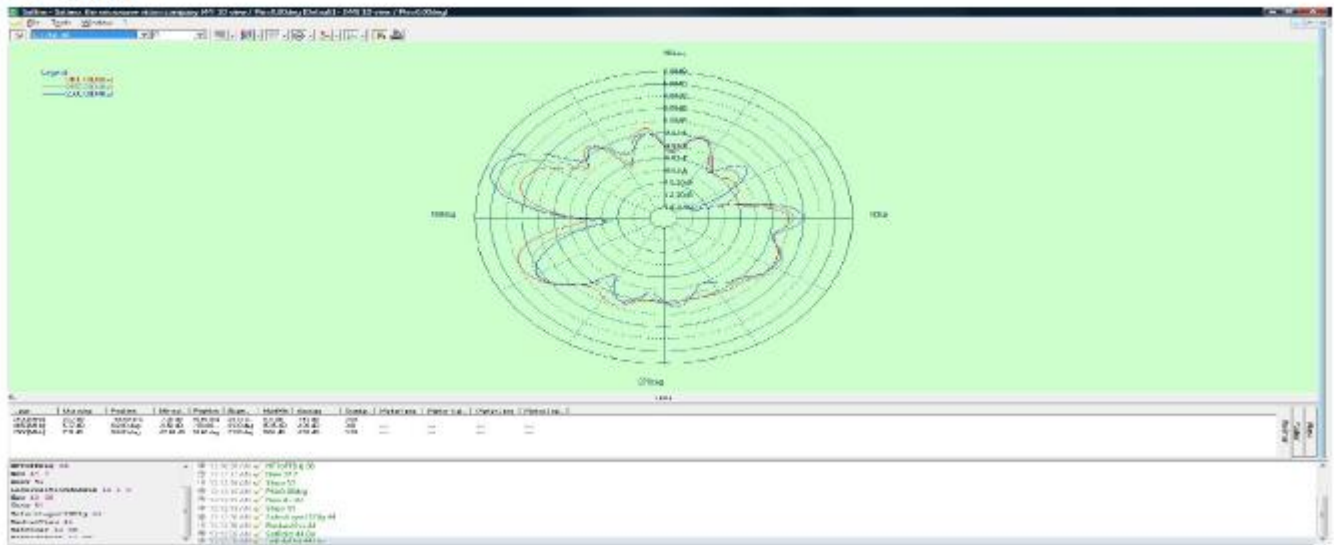
#### ■ FREQUENCY CHARACTERISTICS



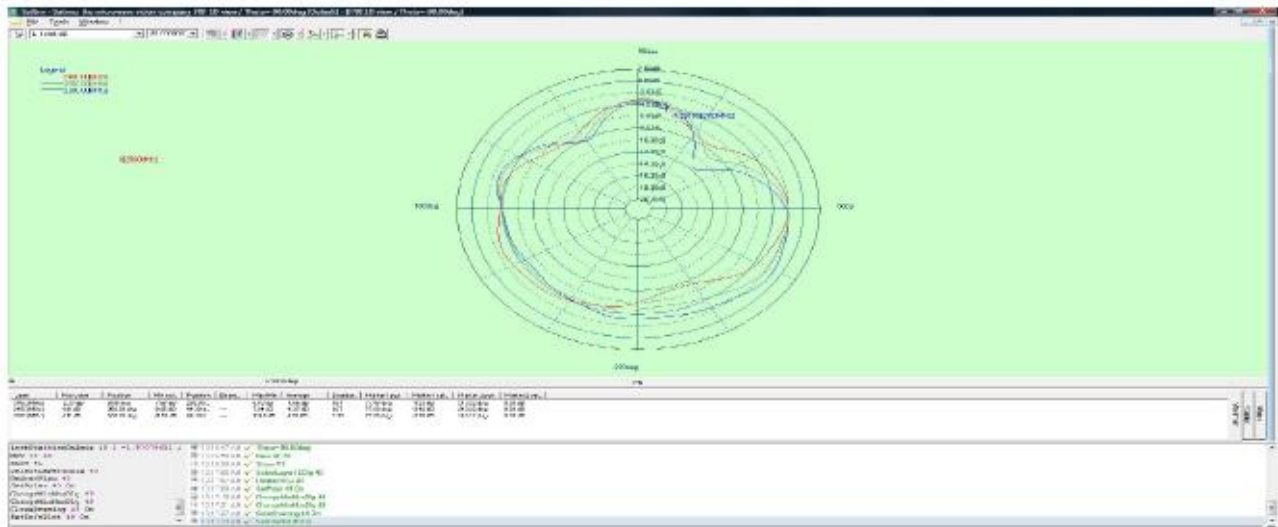
#### RADIATION PATTERN



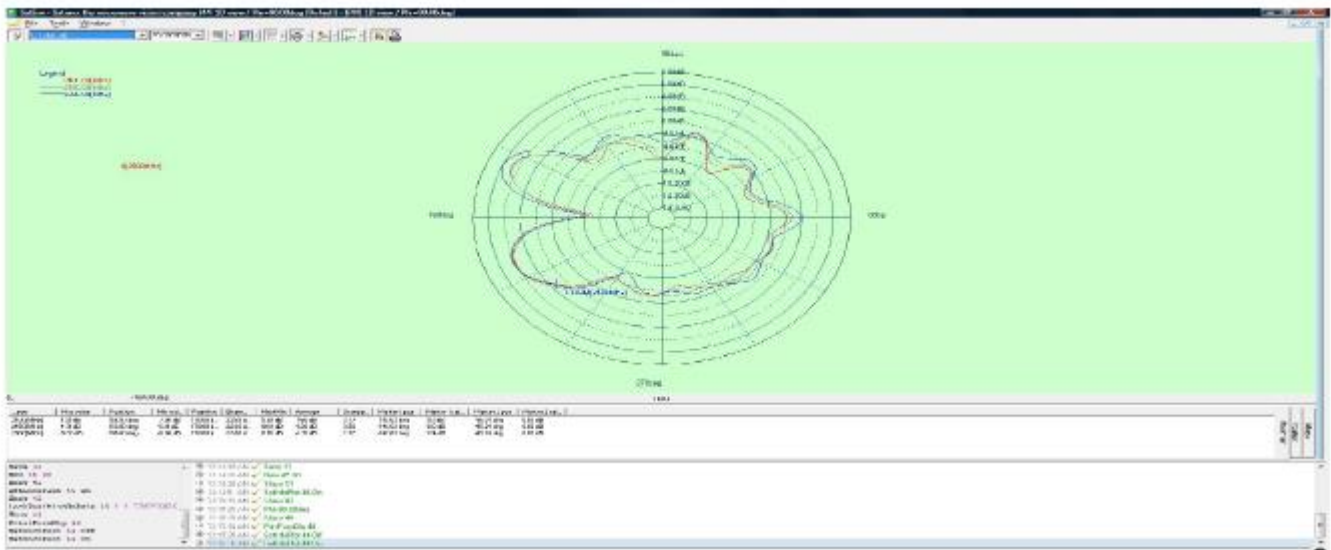
#### X-Z Plane

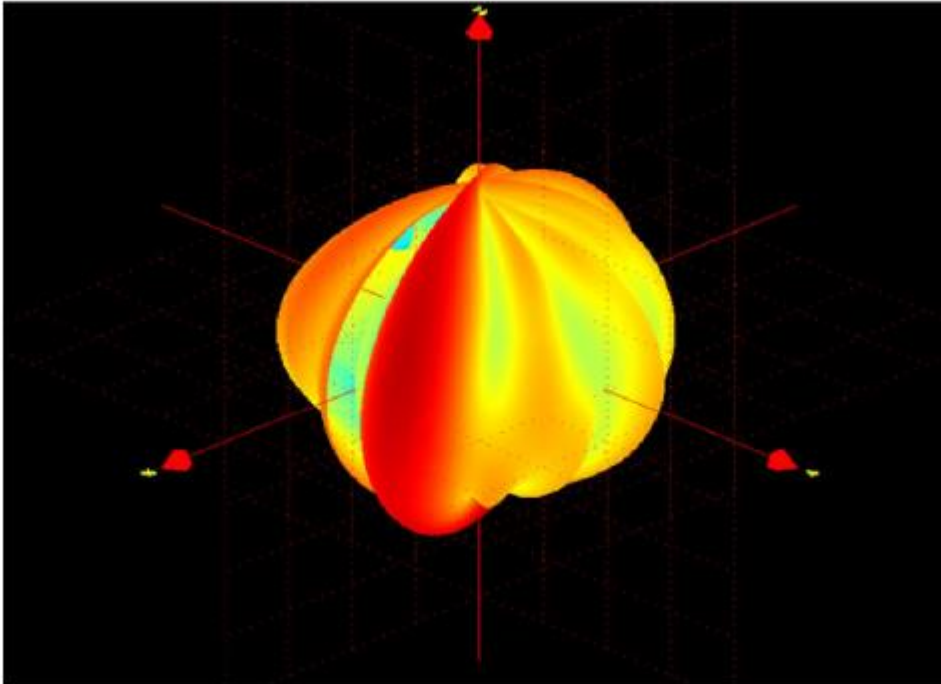


#### Y-Z Plane



#### X-Y Plane





PARAMETERS	VALUES			UNIT
Frequency	2400	2450	2500	MHz
Average Gain	-1.54	-1.20	-1.125	dBi
Peak Gain	4.81	6.62	5.53	dBi
Efficiency	65.5	72.9	70.8	%

May, 2016