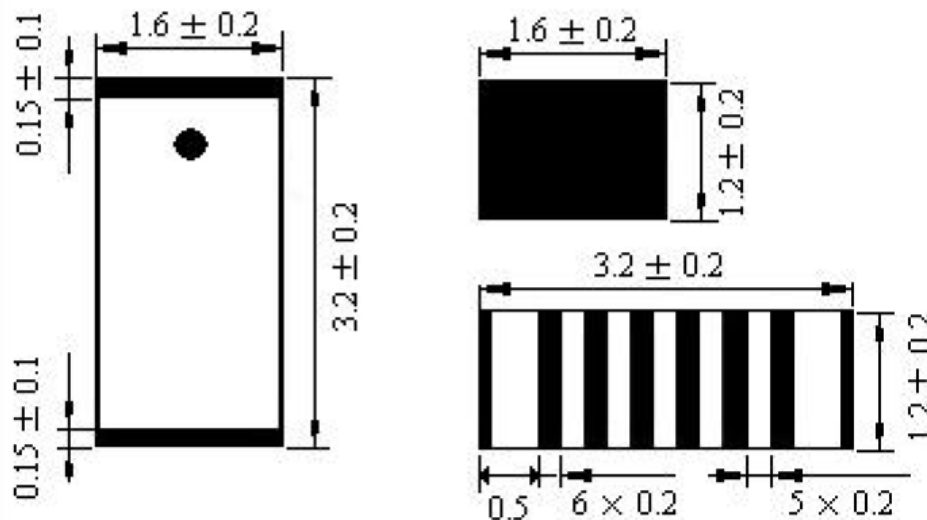
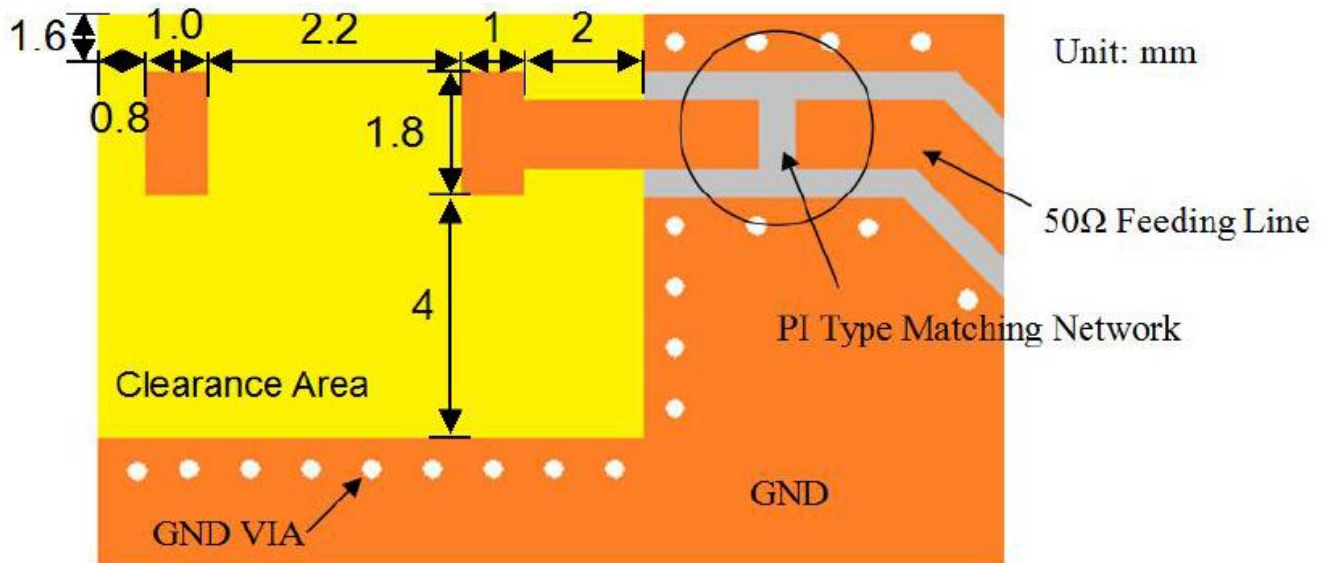


ELECTRICAL SPECIFICATION

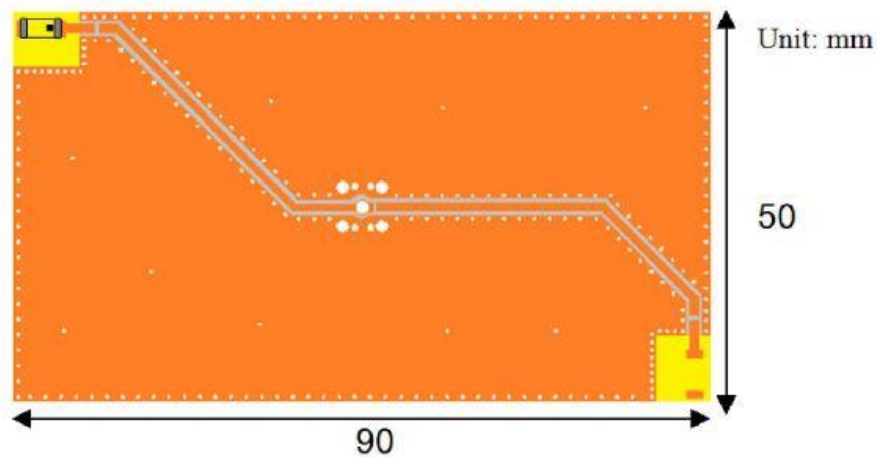
PARAMETERS	SPECIFICATIONS	UNIT
Center Frequency (no matching)	2875	MHz
Center Frequency (after matching)	2450	MHz
Band Width, typ	100	MHz
Peak Gain	5.54	dBi
Impedance	50	Ω
VSWR, max	2.0	-
Polarization	Linear	-
Azimuth Beam Width	Omni-directional	-
Operating Temperature Range	-40 ~ +85	$^{\circ}\text{C}$
Storage Temperature Range	-40 ~ +85	$^{\circ}\text{C}$

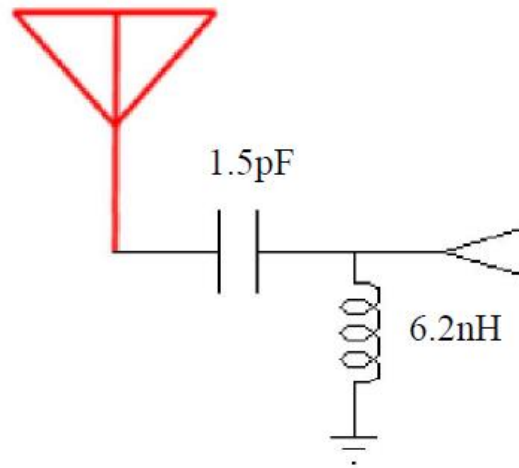
MECHANICAL SPECIFICATION



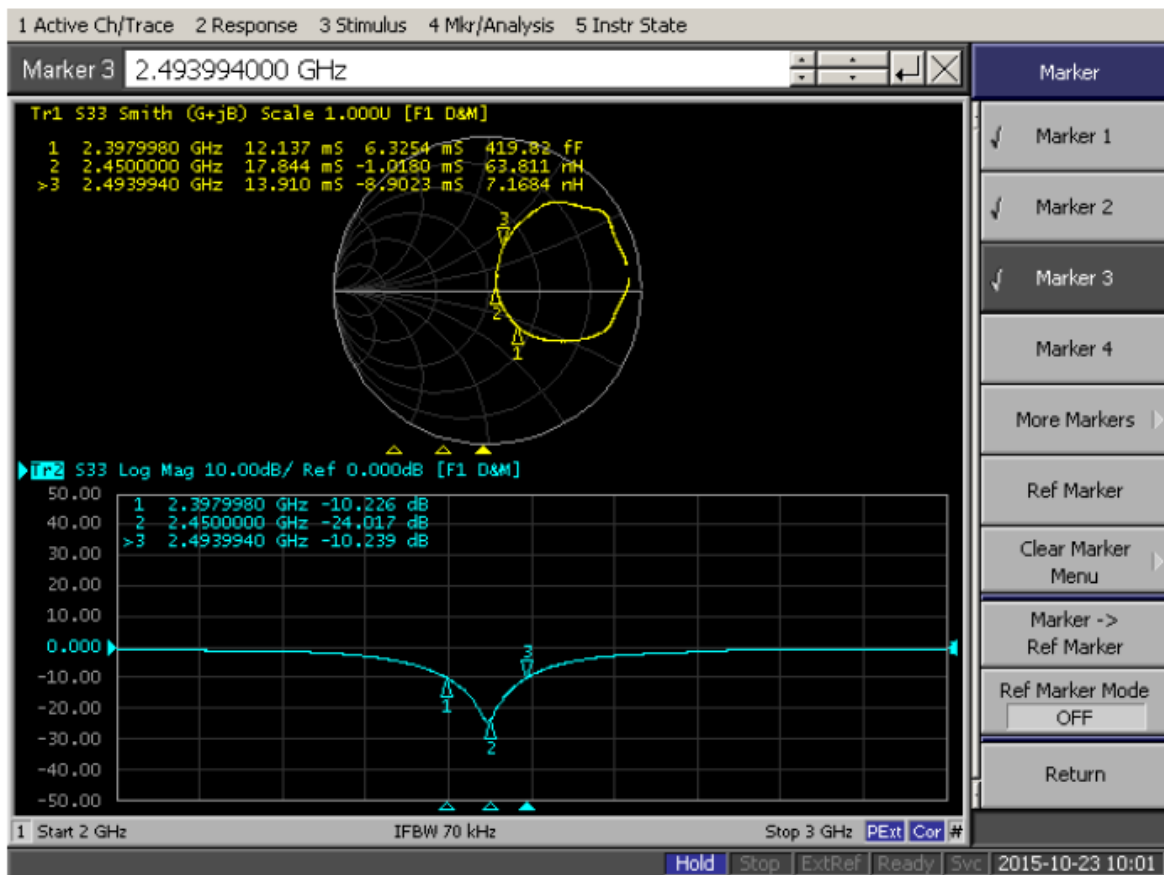


■ EVALUATION BOARD AND MATCHING CIRCUIT

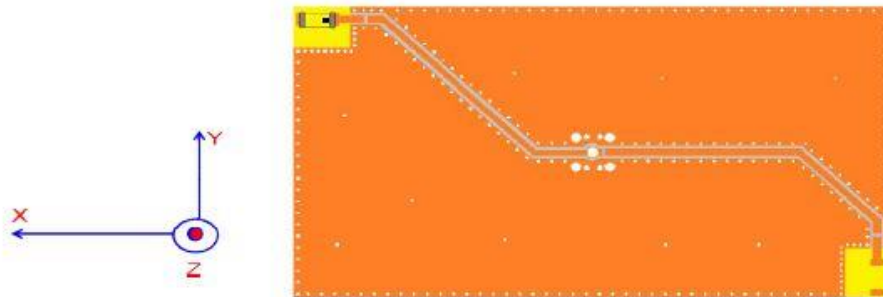




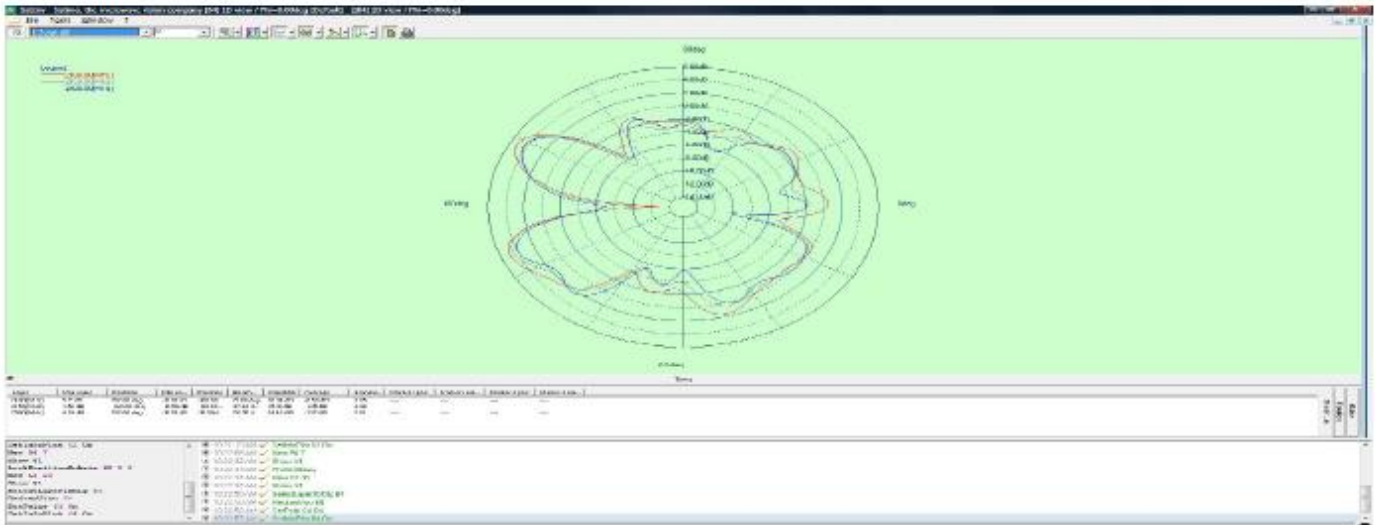
FREQUENCY CHARACTERISTICS



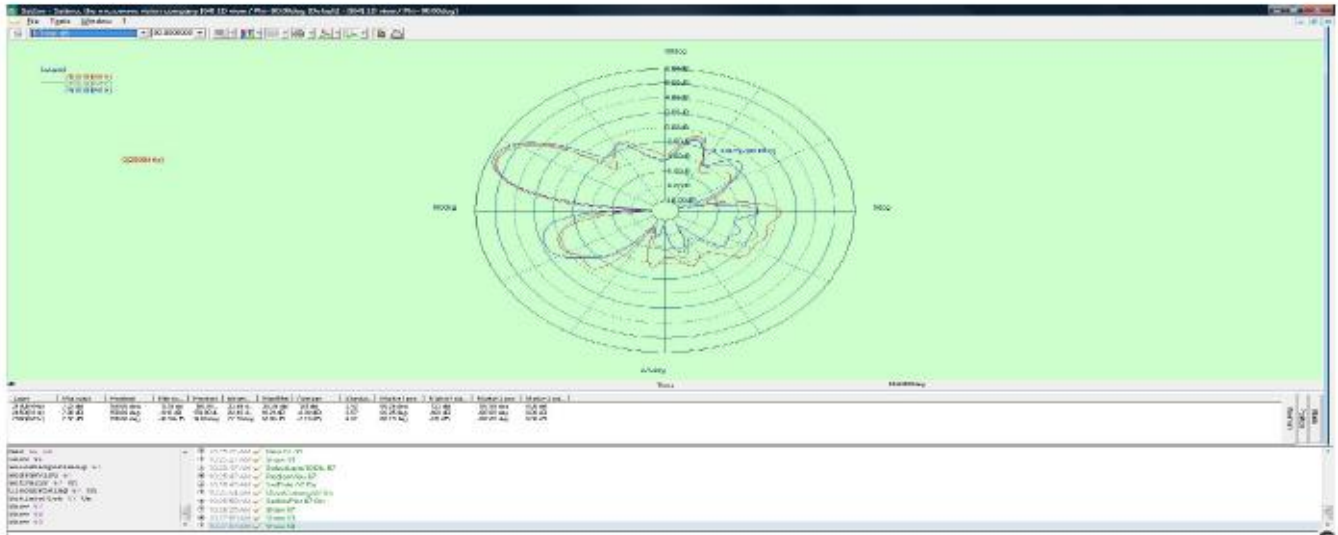
RADIATION PATTERN



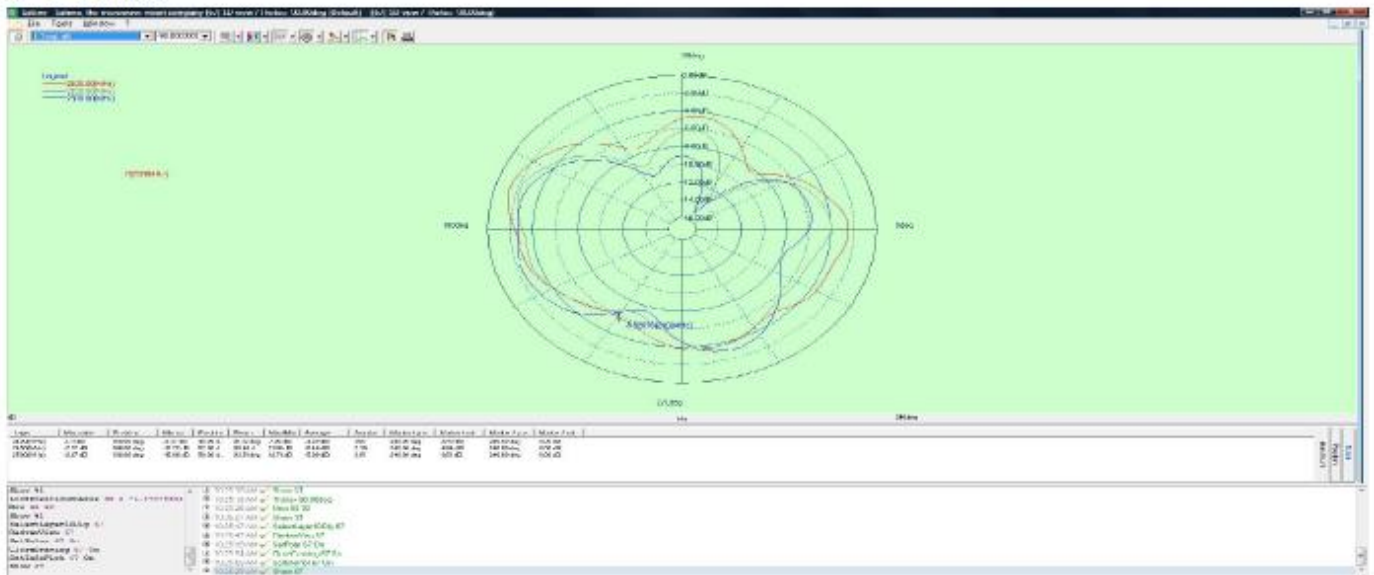
X-Z Plane

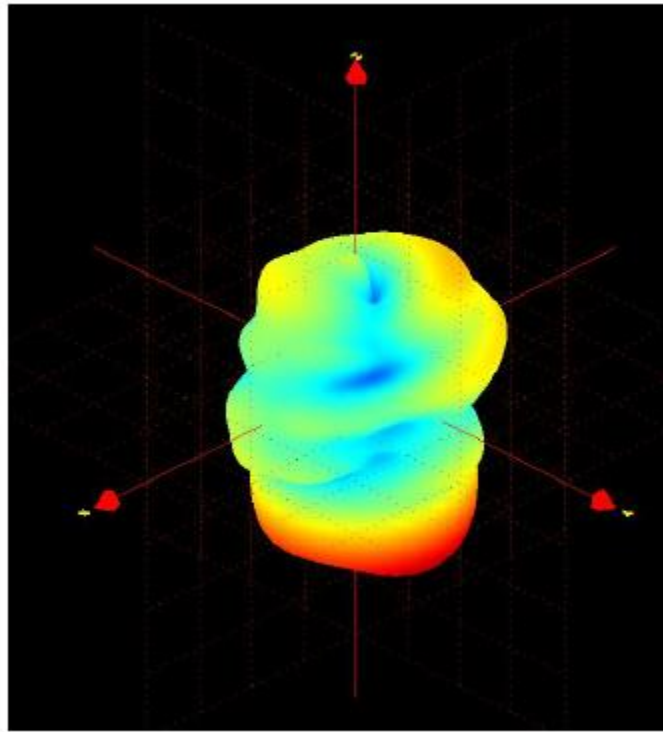


Y-Z Plane



X-Y Plane





PARAMETERS	VALUES			UNIT
Frequency	2400	2450	2500	MHz
Average Gain	-1.56	-1.28	-1.15	dBi
Peak Gain	5.62	5.54	4.48	dBi
Efficiency	61.8	63.5	65.6	%

May, 2016