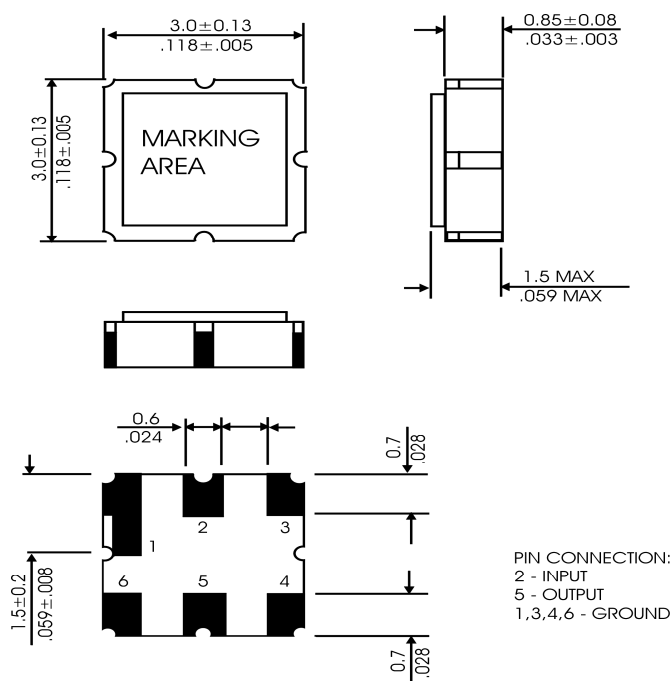


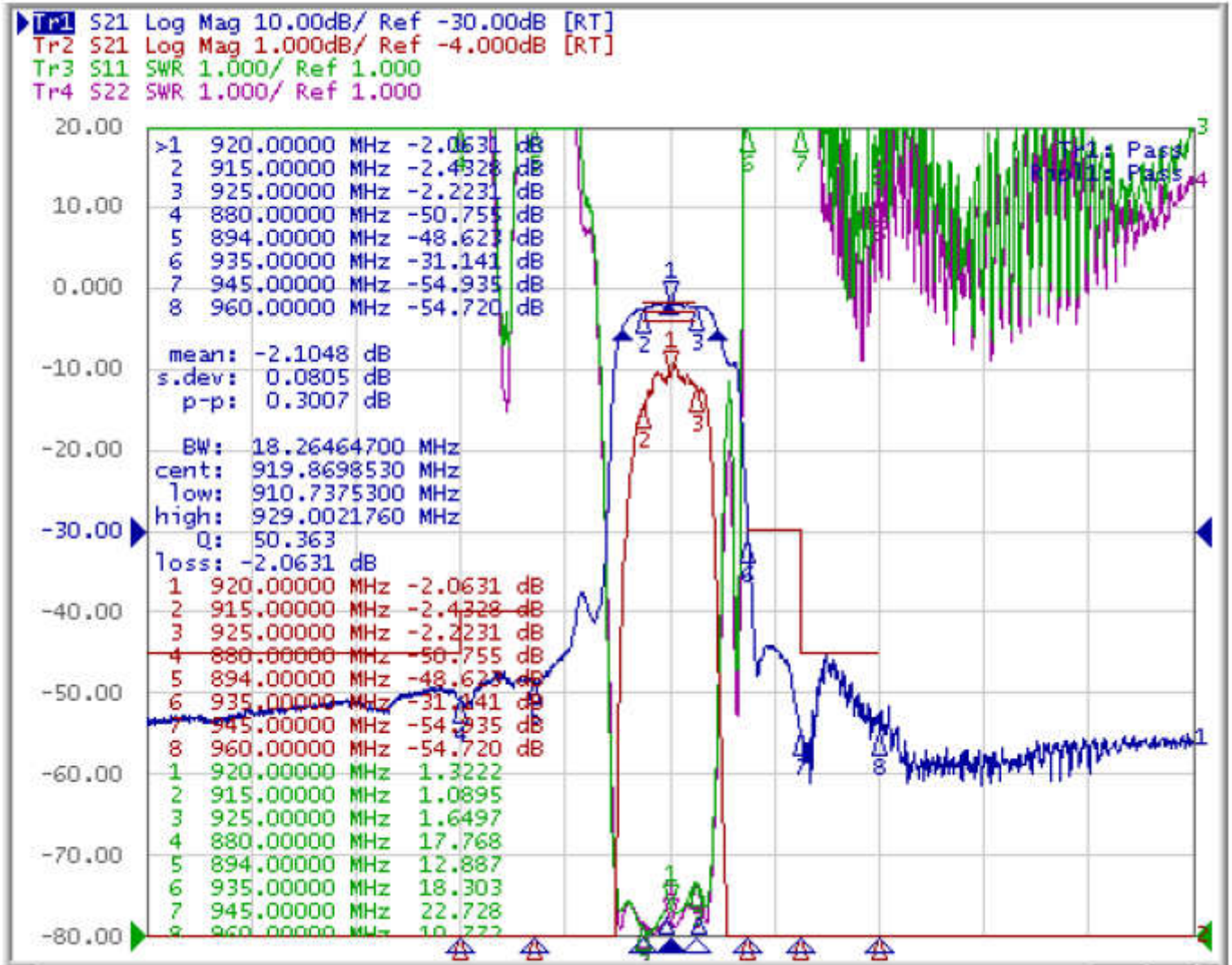
### Electrical Specifications

Parameters	Specification	Unit
Center frequency (Fc)	920.000	MHz
Bandwidth	915.000 to 925.000	MHz
Insertion Loss in BW, Typ / Max	2.5 / 3.5	dB
Amplitude Ripple in BW, Typ / Max	0.5 / 1.0	dB
VSWR, Typ / Max	1.6 / 2.0	-
Absolute Attenuation, Min / Typ	50 ~ 700 MHz	40 / 55
	700 ~ 880 MHz	45 / 48
	880 ~ 894 MHz	40 / 46
	935 ~ 945 MHz	29 / 31
	945 ~ 960 MHz	42 / 45
	960 ~ 2000 MHz	40 / 50
	2000 ~ 3000 MHz	40 / 55
In/Out Impedance ( Single ended)	50	$\Omega$
Input Power, Max	10	dBm
Operating Temperature Range	-40 to +85	$^{\circ}\text{C}$
Storage Temperature	-40 to +85	$^{\circ}\text{C}$

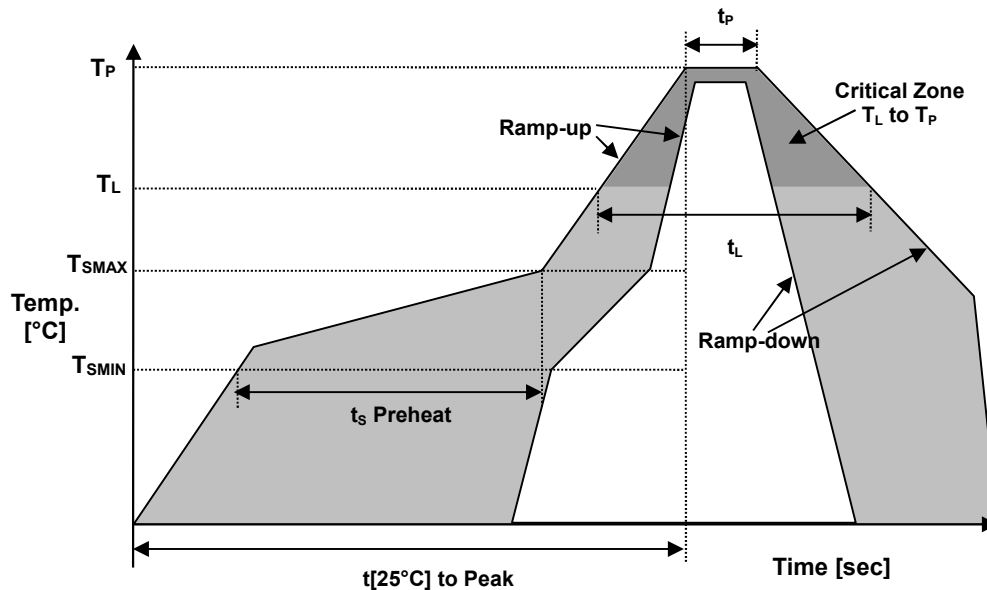
### Dimension



### Frequency Characteristics



### REFLOW PROFILE



Reflow profile		
Temperature Min Preheat	$T_{SMIN}$	150°C
Temperature Max Preheat	$T_{SMAX}$	200°C
Time ( $T_{SMIN}$ to $T_{SMAX}$ )	$t_s$	60-180 sec.
Temperature	$T_L$	217°C
Peak Temperature	$T_P$	260°C
Ramp-up rate	$R_{UP}$	3°C/sec max.
Ramp-down rate	$R_{DOWN}$	6°C/sec max.
Time within 5°C of Peak Temperature	$t_p$	10 sec.
Time $t_{[25^{\circ}\text{C}] \text{ to Peak Temperature}}$	$t_{[25^{\circ}\text{C}] \text{ to Peak}}$	480 sec.
Time	$t_L$	60-150 sec.

### Environmental

PARAMETER	VALUE
MOISTURE SENSITIVITY LEVEL	1
REACH – SVHC	Compliant
RoHS 2	6/6

April 2016