



A RAMI TECHNOLOGY Company

MULTILAYER CERAMIC DIPLEXER

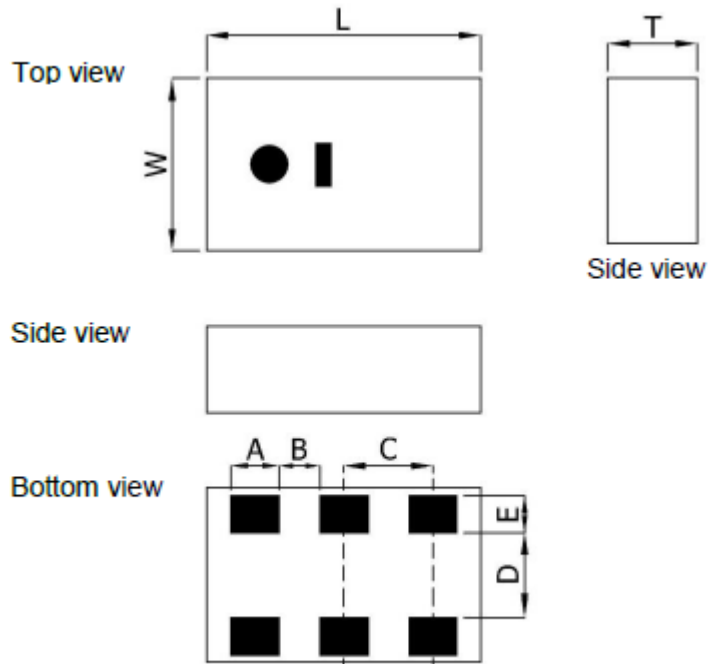
Page 1 of 3

RCDI-3200-7245-2012-W-001

ELECTRICAL SPECIFICATION

PARAMETERS		VALUE		UNIT	
Frequency Range		1400 ~ 5000	6240 ~ 8250	MHz	
Insertion Loss, max	@ 25°C	@ 1400 ~ 1710 MHz	0.4	-	dB
		@ 1710 ~ 2690 MHz	0.5	-	dB
		@ 3300 ~ 5000 MHz	0.9	-	dB
		@ 6240 ~ 6740 MHz	-	1.3	dB
		@ 7750 ~ 8250 MHz	-	1.1	dB
	@ -40 ~ +85°C	@ 1400 ~ 1710 MHz	0.6	-	dB
		@ 1710 ~ 2690 MHz	0.7	-	dB
		@ 3300 ~ 5000 MHz	1.1	-	dB
		@ 6240 ~ 6740 MHz	-	1.5	dB
		@ 7750 ~ 8250 MHz	-	1.3	dB
Attenuation, min	@ 1400 ~ 1805 MHz	-	20	dB	
	@ 1805 ~ 1950 MHz	-	20	dB	
	@ 1950 ~ 2400 MHz	-	20	dB	
	@ 2400 ~ 2500 MHz	-	20	dB	
	@ 2500 ~ 2690 MHz	-	25	dB	
	@ 3300 ~ 5000 MHz	-	20	dB	
	@ 6240 ~ 8250 MHz	15	-	dB	
	@ 8251 ~ 10000 MHz	15	-	dB	
	@ 10001 ~ 15000 MHz	10	-	dB	
	@ 15001 ~ 20000 MHz	4	-	dB	
	@ 12450 ~ 13500 MHz	-	5	dB	
	@ 15500 ~ 16500 MHz	-	5	dB	
	@ 18720 ~ 20220 MHz	-	5	dB	
	@ 23250 ~ 24750 MHz	-	5	dB	
Isolation, min/typ	@ 1400 ~ 1805 MHz	20	-	dB	
	@ 1805 ~ 1950 MHz	20	-	dB	
	@ 1950 ~ 2400 MHz	20	-	dB	
	@ 2400 ~ 2500 MHz	20	-	dB	
	@ 2500 ~ 2690 MHz	25	-	dB	
	@ 3300 ~ 5000 MHz	20	-	dB	
	@ 6240 ~ 8250 MHz	15	-	dB	
VSWR, max	1.8	2.0	-		
Impedance	50	-	Ω		
Power Capacity, max	3	-	W		
Moisture Sensitivity Levels	Level 1	-	-		
Operating Temperature Range	-40 ~ +85	-	°C		
Storage Temperature Range	-40 ~ +85	-	°C		
Storage Condition Before Soldering (Included Packaging Material)	Storage Temperature Range	+5 ~ +40	°C		
	Relative Humidity	30 ~ 70	%		

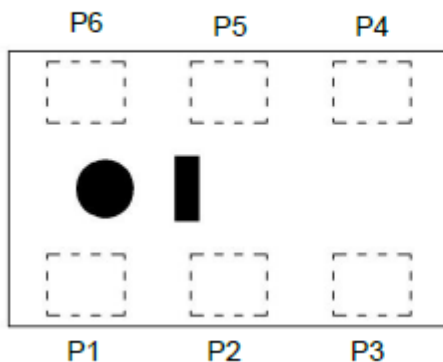
MECHANICAL SPECIFICATION



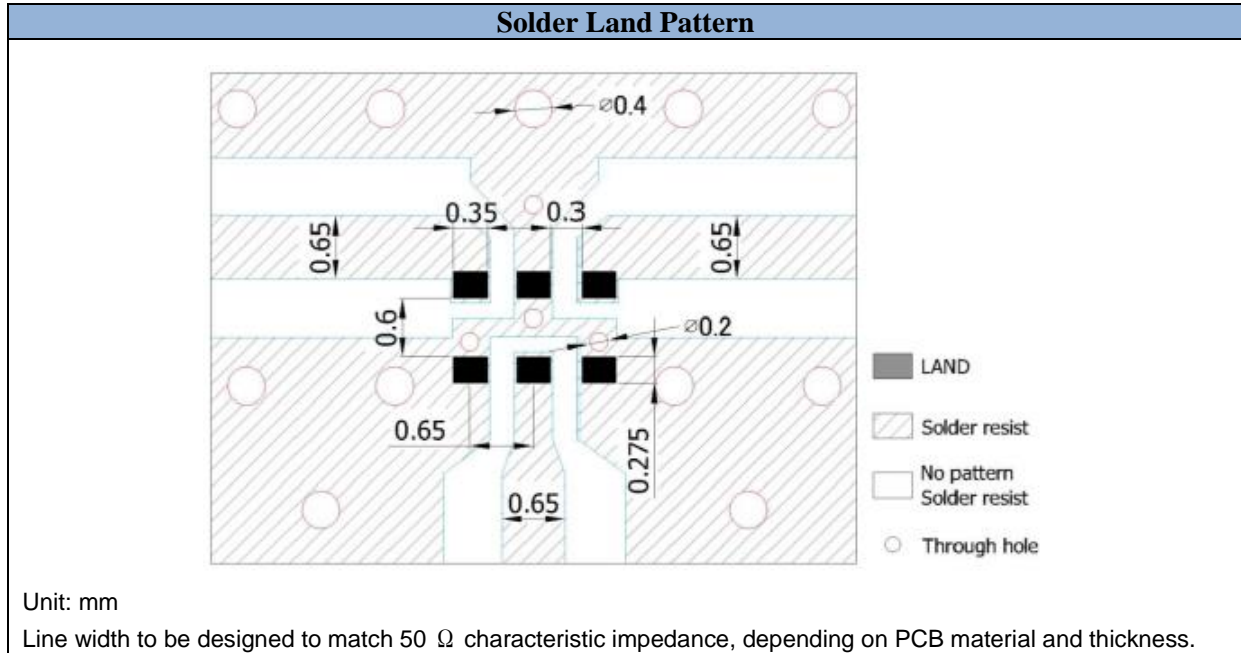
Symbol	Dimension (mm)
L	2.00 ± 0.15
W	1.25 ± 0.15
T	0.70 max.
A	0.35 ± 0.10
B	0.30 ± 0.10
C	0.65 ± 0.10
D	0.60 ± 0.10
E	0.275 ± 0.10

CONSTRUCTION

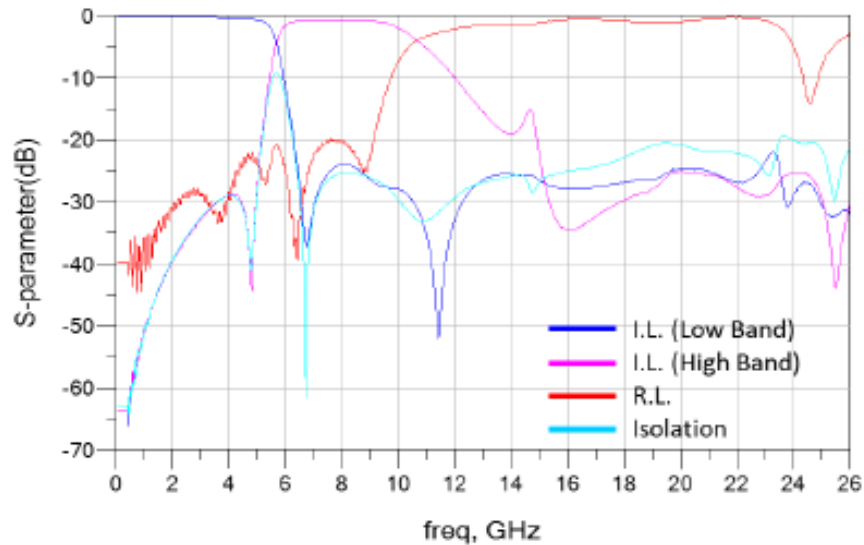
Top view



PIN	Connection
1	GND
2	Common Port
3	GND
4	Low Band Port
5	GND
6	High Band Port



FREQUENCY CHARACTERISTICS



APPROVAL

RALTRON	
DRAWN BY:	AR, March 01, 2022
APPROVED BY:	CP, March 01, 2022
REVISION:	A, Initial Release

Raltron Electronics / RAMI Technology USA, LLC, including its affiliates, employees, agents and other persons acting on its behalf (collectively Raltron/RAMI Tech), disclaim any and all liability for any errors or inaccuracies contained in this data sheet. While Raltron/RAMI Tech has made every reasonable effort ensure the accuracy of all product information, specifications and data contained herein, Raltron/RAMI Tech does not guarantee that the information is accurate, reliable or current. The product information is provided only for reference purposes only and is subject to change, correction or revision, at any time without notice. Raltron/RAMI Tech does not assume any liability arising out of an application or use of any product described herein and disclaims any warranties expressed or implied. The user of products in such applications shall assume all risks of such use and will agree to hold Raltron/RAMI Tech, harmless against all damages.

Copyright © 2016, Raltron Electronics / RAMI Technology USA, LLC. All rights reserved. No part of this document may be reproduced in any form without the prior written permission of Raltron Electronics / RAMI Technology USA, LLC.