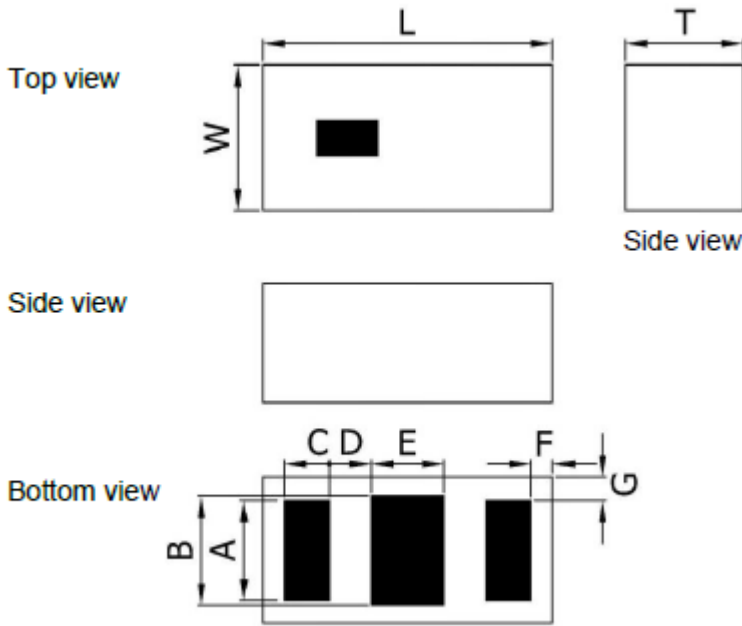


Electrical Specifications

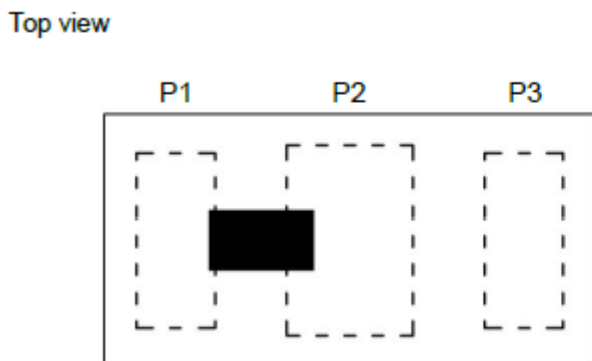
Parameters		Value	Unit	
Frequency Range		6240.000 ~ 8250.000	MHz	
Insertion Loss, max	@ 25°C	@ 6240 ~ 6750 MHz	1.50	dB
		@ 7750 ~ 8250 MHz	1.50	dB
	@ -40 ~ +85°C	@ 6240 ~ 6750 MHz	1.70	dB
		@ 7750 ~ 8250 MHz	1.70	dB
Amplitude Ripple, max	@ 6240 ~ 6750 MHz	0.70	dB	
	@ 7750 ~ 8250 MHz	0.70	dB	
Attenuation, min	@ 700 ~ 2690 MHz	27.0	dB	
	@ 3300 ~ 3800 MHz	27.0	dB	
	@ 3800 ~ 4000 MHz	29.0	dB	
	@ 4000 ~ 4200 MHz	34.0	dB	
	@ 4400 ~ 5000 MHz	25.0	dB	
	@ 12450 ~ 13500 MHz	20.0	dB	
	@ 15500 ~ 16500 MHz	20.0	dB	
Return Loss, min		10.0	dB	
Impedance		50	Ω	
Power Capacity, max		3	W	
Moisture Sensitivity Levels		LEVEL 1	-	
HBM ESD	Pass on all pins (Base on AEC-Q200-002)	1	kV	
MM ESD	Pass (Base on EIA/JESD22-A115)	200	V	
Operating Temperature Range		-40 ~ +85	°C	
Storage Temperature Range		-40 ~ +85	°C	
Storage Condition Before Soldering (Included Packaging Material)	Storage Temperature Range	+5 ~ +40	°C	
	Relative Humidity	30 ~ 70	%	

Dimensions



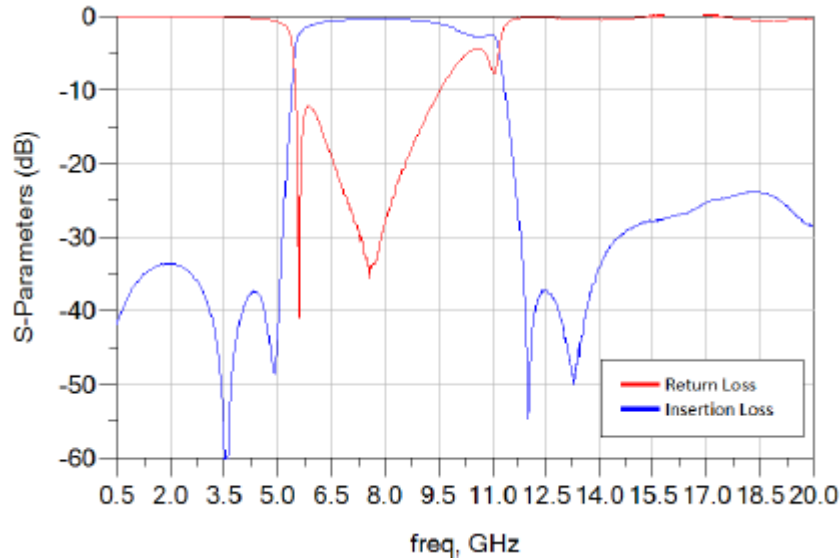
Symbol	Dimension (mm)
L	1.60 ± 0.10
W	0.80 ± 0.10
T	0.60 ± 0.10
A	0.55 ± 0.10
B	0.60 ± 0.10
C	0.25 ± 0.10
D	0.23 ± 0.10
E	0.40 ± 0.10
F	0.12 ± 0.10
G	0.125 ± 0.10

CONSTRUCTION

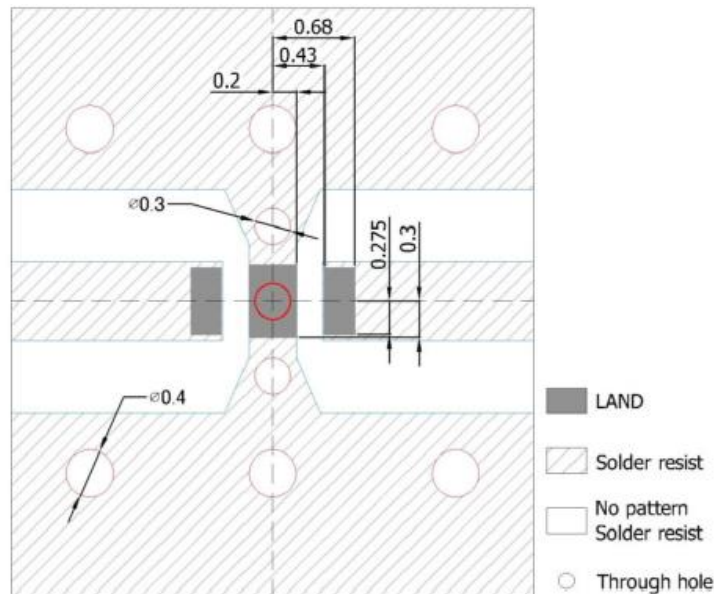


PIN	Connection
1	Input port
2	GND
3	Output port

Frequency Characteristics



Solder Land Pattern



Unit : mm

Line width to be designed to match 50 Ω characteristic impedance, depending on PCB material and thickness.

APPROVAL

DRAWN BY	AR, March 01, 2022
APPROVED BY	CP, March 01, 2022
REVISION	A, Initial Release



Raltron Electronics / RAMI Technology USA, LLC, including its affiliates, employees, agents and other persons acting on its behalf (collectively Raltron/RAMI Tech), disclaim any and all liability for any errors or inaccuracies contained in this data sheet. While Raltron/RAMI Tech has made every reasonable effort to ensure the accuracy of all product information, specifications and data contained herein, Raltron/RAMI Tech does not guarantee that the information is accurate, reliable or current. The product information is provided only for reference purposes only and is subject to change, correction or revision, at any time without notice. Raltron/RAMI Tech does not assume any liability arising out of an application or use of any product described herein and disclaims any warranties expressed or implied. The user of products in such applications shall assume all risks of such use and will agree to hold Raltron/RAMI Tech, harmless against all damages.

Copyright © 2016, Raltron Electronics / RAMI Technology USA, LLC. All rights reserved. No part of this document may be reproduced in any form without the prior written permission of Raltron Electronics / RAMI Technology USA, LLC.