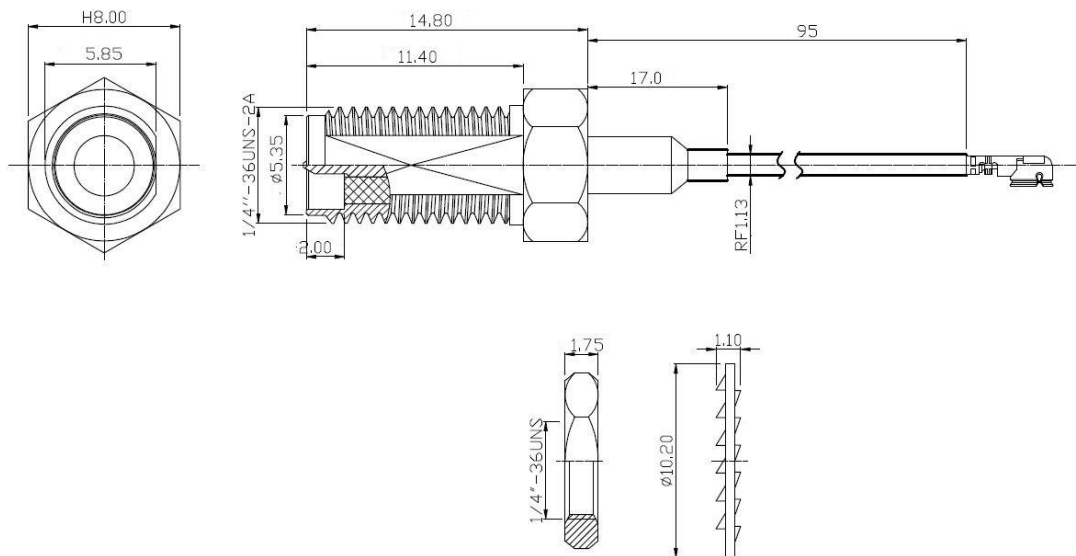




❖ ELECTRICAL SPECIFICATION

PARAMETER	VALUE	UNIT
Working Frequency	DC ~ 6	GHz
Impedance	50	Ω
VSWR, max	2.0	-
Working Voltage, max	335	V
Insulation Resistance	1000	M Ω
Contact Resistance, max	5	m Ω
Outer Contact, max	2.5	m Ω
Working Temperature Range	-55 ~ +125	$^{\circ}$ C

❖ DIMENSIONS



Description	Material	Finished
Heat Shrinkable Tube	-	Black
RF 1.13 Cable	-	Black
Washer	Cu	Gold Plating
Nut	Cu	Gold Plating
Back Stopper	Cu	Gold Plating
Centre Male Pin	Cu	Gold Plating
RP-SMA Jack	Cu	Gold Plating
Insulator	PTFE	White

				 A RAMI TECHNOLOGY Company		
Rev	Change	Date	Name			Description RP SMA JACK S/T FOR RF1.13 CABLE
Projection		Scale	Date			
		--	Drawn	03.31.2021	AR	Part Number RCB-16-F-95-11-SD
Dimensions in mm			Checked	03.31.2021	CP	
			Approved	03.31.2021	CP	