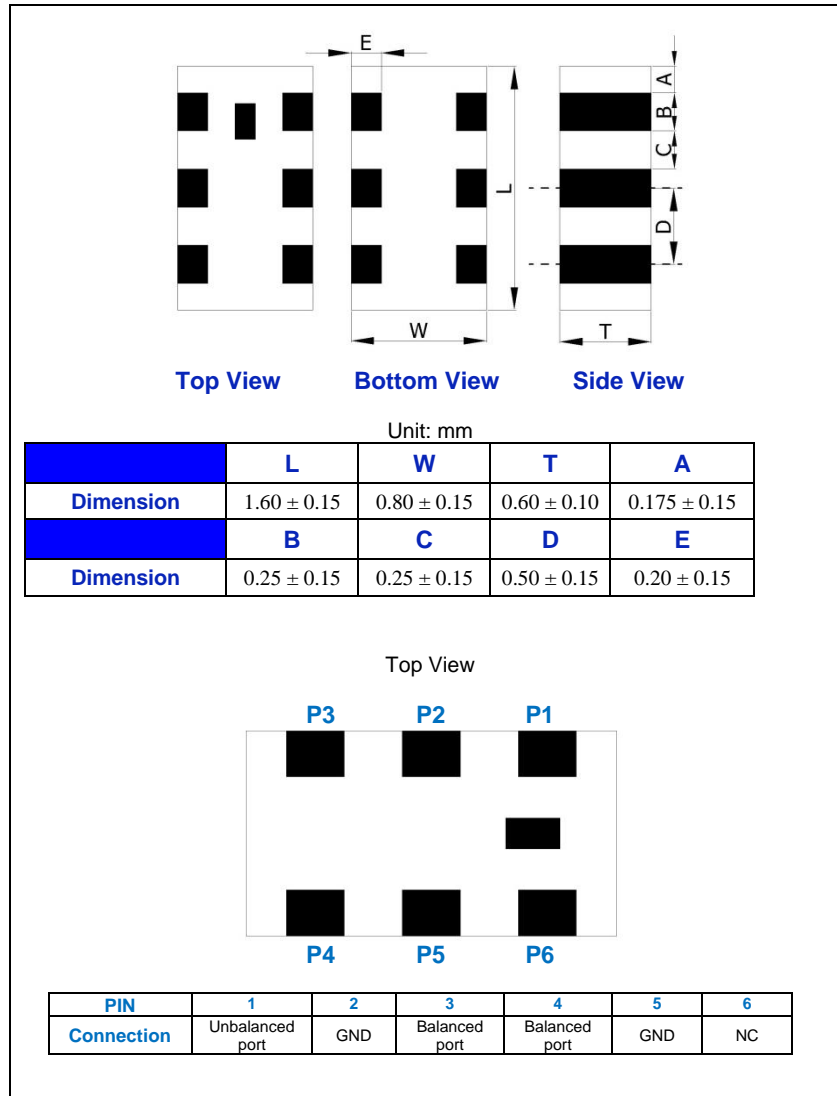


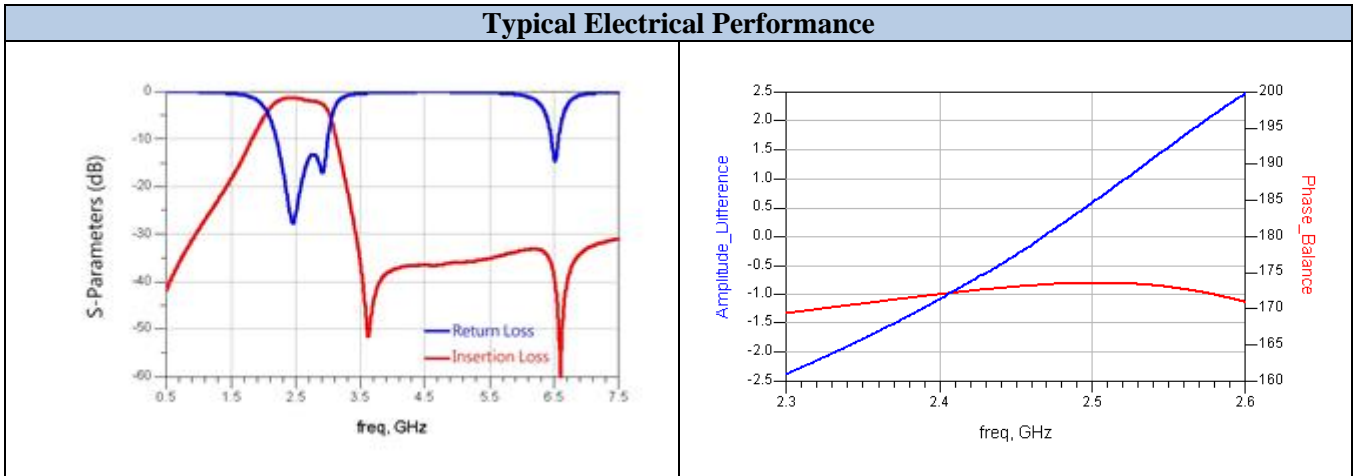
■ ELECTRICAL SPECIFICATION

| PARAMETER | | SPECIFICATIONS | UNIT |
|-----------------------------|-----------------|---|------|
| Frequency Range | | 2400 ~2500 | MHz |
| Insertion Loss, max | @ 25°C | 1.6 | dB |
| | @ -40 ~ +85°C | 1.8 | |
| Attenuation, min | @ 4800~5000 MHz | 25 | dB |
| | @ 7200~7500 MHz | 25 | |
| VSWR, max | | 2.4 | - |
| Unbalanced Impedance | | 50 | Ω |
| Balanced Impedance | | Conjugate match to TI CC26XX chipset | - |
| Phase Difference | | 180 ± 18 | ° |
| Amplitude Difference, max | | 2.3 | dB |
| Operating Temperature Range | | -40 ~ +85 | °C |
| Moisture Sensitivity Levels | | Level 1 | |

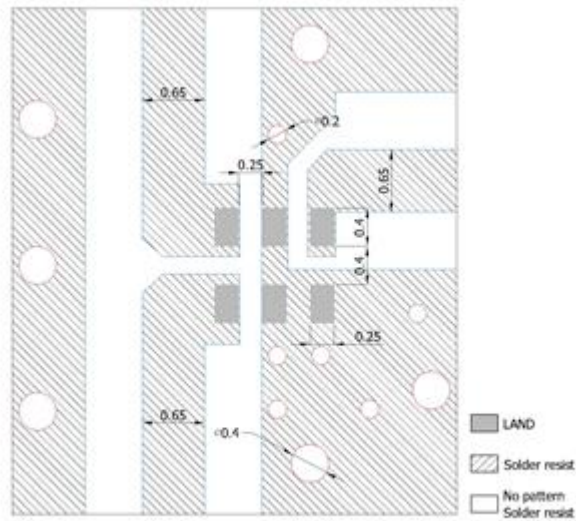
MECHANICAL SPECIFICATION



Typical Electrical Performance



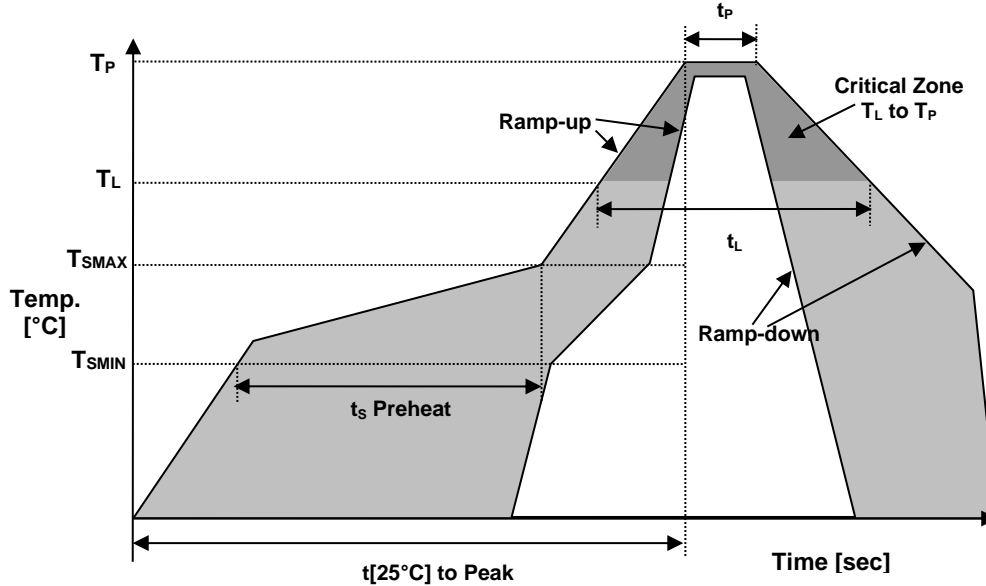
Solder Land Pattern



Unit : mm

Line width to be designed to match 50 Ω characteristic impedance, depending on PCB material and thickness.

REFLOW PROFILE



| Reflow profile | | |
|---|----------------------------|--------------|
| Temperature Min Preheat | T_{SMIN} | 150°C |
| Temperature Max Preheat | T_{SMAX} | 200°C |
| Time (T_{SMIN} to T_{SMAX}) | t_s | 60-180 sec. |
| Temperature | T_L | 217°C |
| Peak Temperature | T_P | 260°C |
| Ramp-up rate | R_{UP} | 3°C/sec max. |
| Ramp-down rate | R_{DOWN} | 6°C/sec max. |
| Time within 5°C of Peak Temperature | t_p | 10 sec. |
| Time $t_{[25^\circ C]}$ to Peak Temperature | $t_{[25^\circ C]}$ to Peak | 480 sec. |
| Time | t_L | 60-150 sec. |

ENVIRONMENTAL

| PARAMETER | VALUE |
|----------------------------|---------------------------|
| MOISTURE SENSITIVITY LEVEL | 1 |
| RoHS2 | 6/6 COMPLIANT & LEAD FREE |
| REACH-SVHC | COMPLIANT |
| HALOGEN-FREE | COMPLIANT |
| TERMINATION FINISH | Sn |



APPROVAL

| RALTRON | |
|--------------|--------------------|
| DRAWN BY: | LP, March 22, 2016 |
| APPROVED BY: | CP, March 22, 2016 |
| REVISION: | A, Initial Release |

Raltron Electronics/RAMI Technology USA, LLC, including its affiliates, employees, agents and other persons acting on its behalf (collectively Raltron/RAMI Tech), disclaim any and all liability for any errors or inaccuracies contained in this data sheet. While Raltron/RAMI Tech has made every reasonable effort to ensure the accuracy of all product information, specifications and data contained herein, Raltron/RAMI Tech does not guarantee that the information is accurate, reliable or current. The product information is provided for reference purposes only and is subject to change, correction or revision, at any time without notice. Raltron/RAMI Tech does not assume any liability arising out of an application or use of any product described herein and disclaims any warranties expressed or implied. The user of products in such applications shall assume all risks of such use and will agree to hold Raltron/RAMI Tech, harmless against all damages.