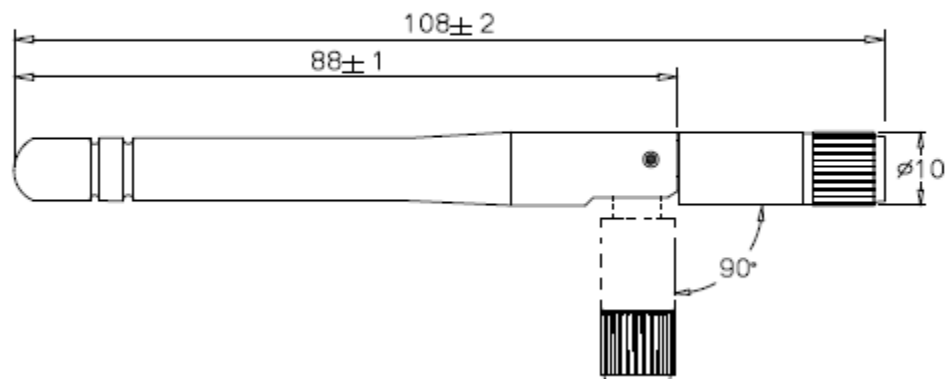


■ SPECIFICATION

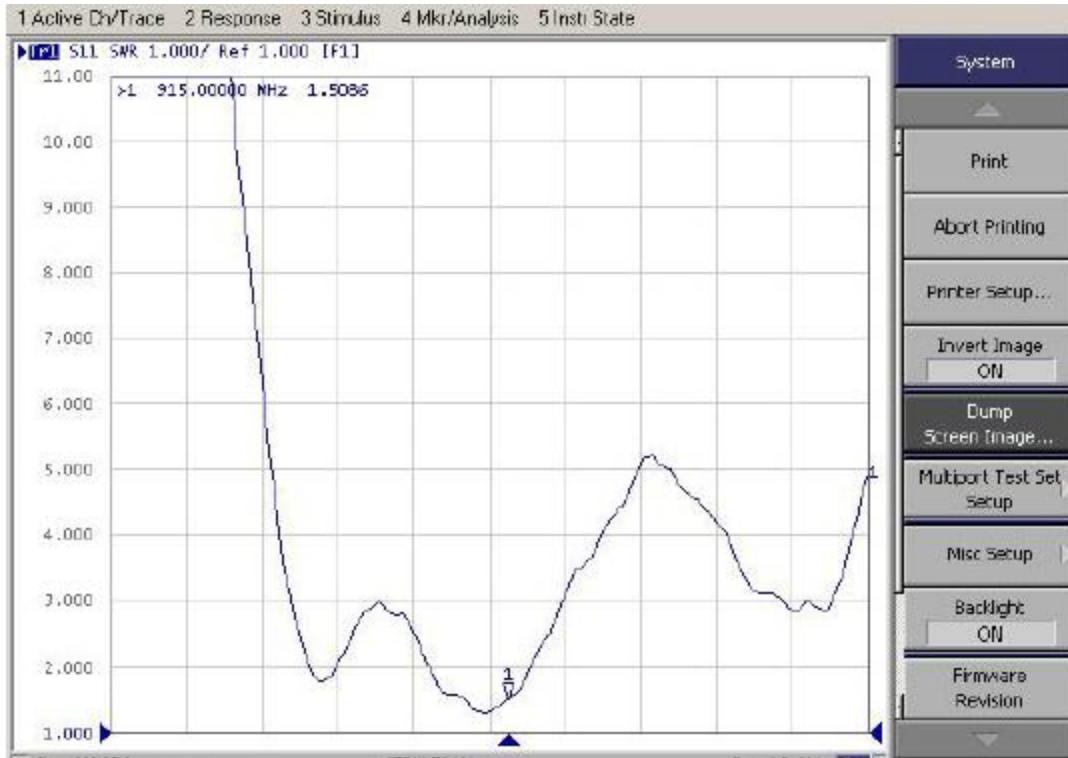
PARAMETERS	VALUE	UNIT
Frequency range	915.000	MHz
Gain	2	dBi
VSWR, max	2.0	-
Impedance	50	Ω
Return Loss, max	-10	dB
Radiation	Omni-directional	-
Polarization	Linear Vertical	-
Power, max	1	W
Connector	Swivel SMA Male	-
Operating Temperature Range	-40 ~ +85	$^{\circ}\text{C}$



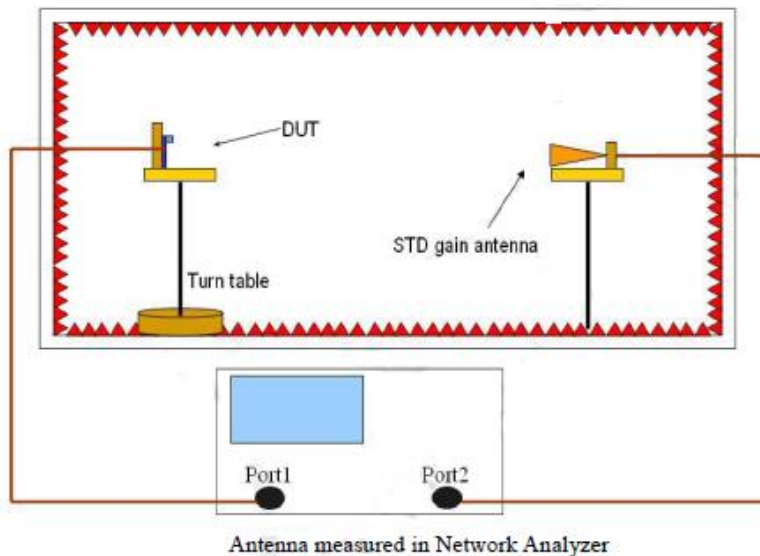
■ DIMENSIONS



FREQUENCY CHARACTERISTICS



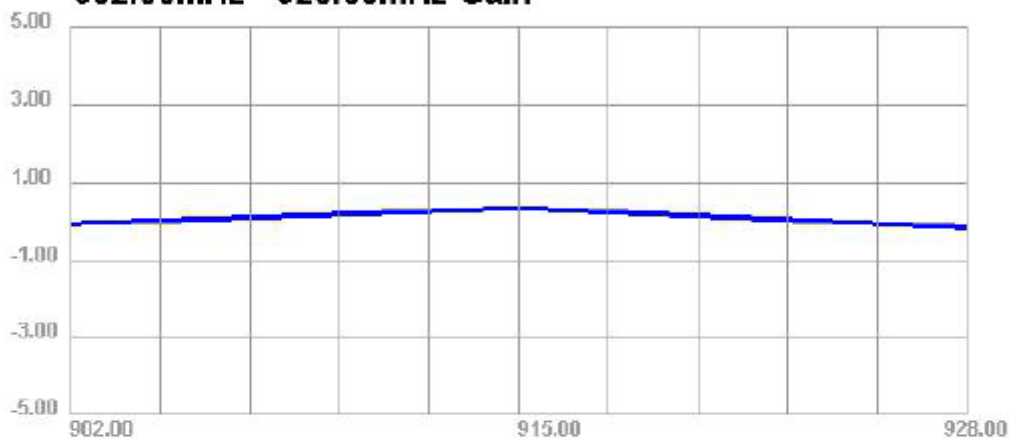
ANECHOIC CHAMBER TEST



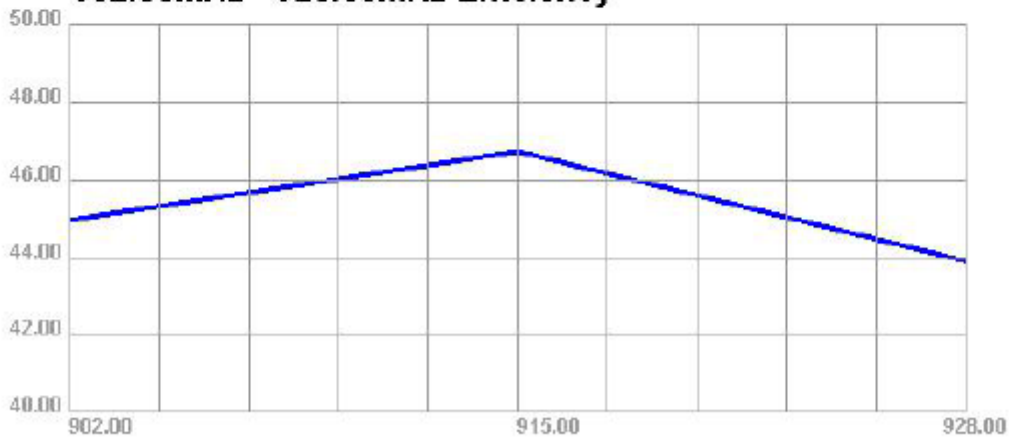
■ GAIN AND EFFICIENCY

Passive Test For 915								
Freq (MHz)	Effi (%)	Effi (dB)	Gain (dBi)	Gain (dBd)	Max (dB)	Min (dB)	Attenut Hor	Attenut Ver
902	44.95	-3.47	-0.07	-2.22	-0.07	-13.52	37.47	37.43
915	46.72	-3.31	0.33	-1.82	0.33	-12.67	37.35	37.41
928	43.89	-3.58	-0.17	-2.32	-0.17	-12.26	37.18	37.29

902.00MHz - 928.00MHz Gain

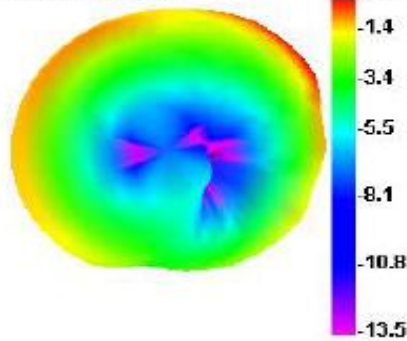


902.00MHz - 928.00MHz Efficiency

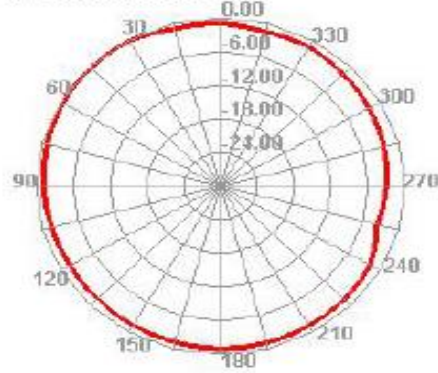


■ RADIATION PATTERN

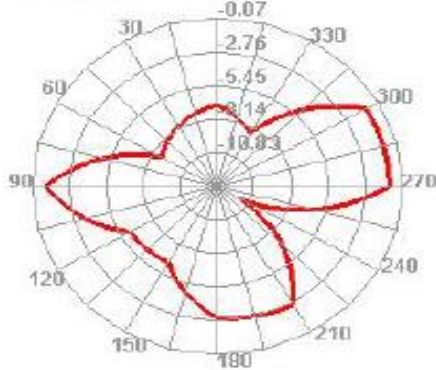
902.000MHz



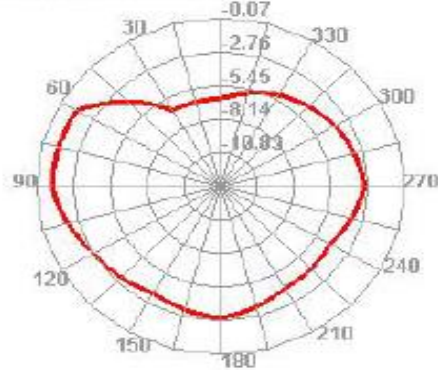
902.000MHz H



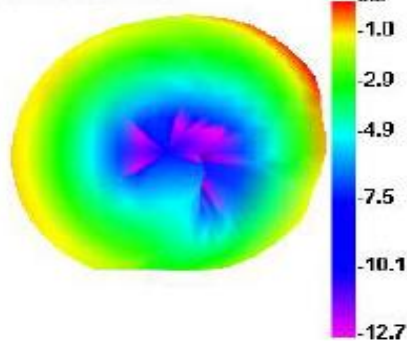
902.000MHz E1



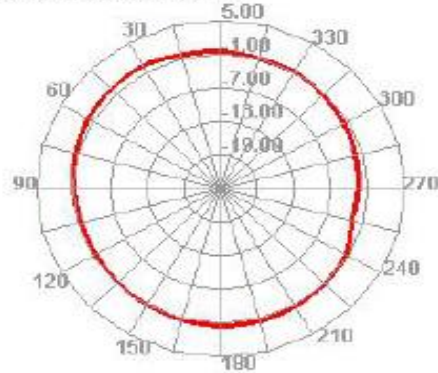
902.000MHz E2



915.000MHz

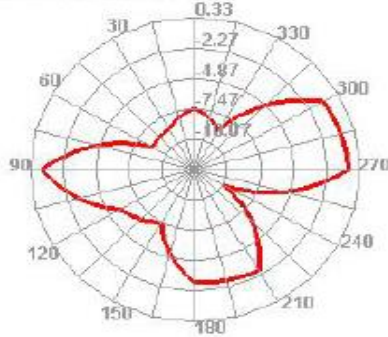


915.000MHz H

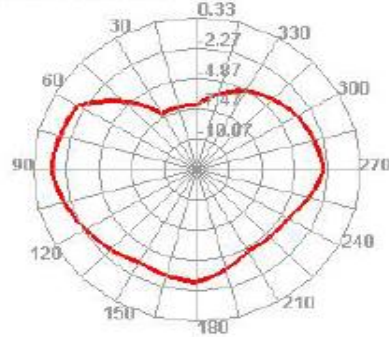


RST-W1B6-10808-22M-FY-001

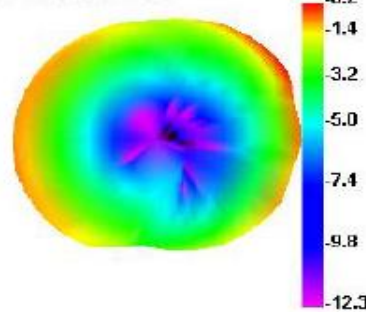
915.000MHz E1



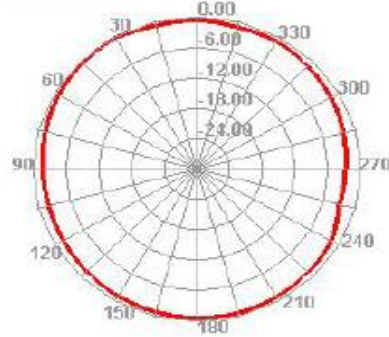
915.000MHz E2



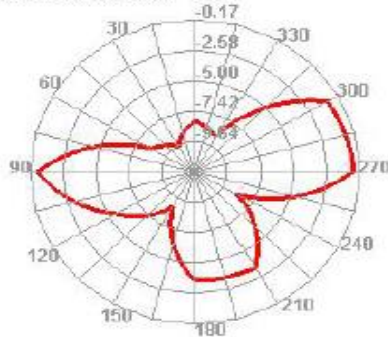
928.000MHz



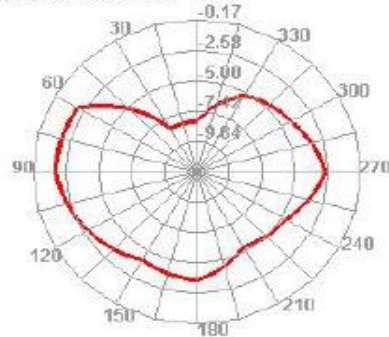
928.000MHz H



928.000MHz E1



928.000MHz E2



APPROVAL

RALTRON	
DRAWN BY:	AR, May 30,2018
APPROVED BY:	CP, May 30,2018
REVISION:	A, Initial Release

Raltron Electronics/RAMI Technology USA, LLC, including its affiliates, employees, agents and other persons acting on its behalf (collectively Raltron/RAMI Tech), disclaim any and all liability for any errors or inaccuracies contained in this data sheet. While Raltron/RAMI Tech has made every reasonable effort to ensure the accuracy of all product information, specifications and data contained herein, Raltron/RAMI Tech does not guarantee that the information is accurate, reliable or current. The product information is provided for reference purposes only and is subject to change, correction or revision, at any time without notice. Raltron/RAMI Tech does not assume any liability arising out of an application or use of any product described herein and disclaims any warranties expressed or implied. The user of products in such applications shall assume all risks of such use and will agree to hold Raltron/RAMI Tech, harmless against all damages.

Copyright © 2016, Raltron Electronics / RAMI Technology USA, LLC. All rights reserved. No part of this document may be reproduced in any form without the prior written permission of Raltron Electronics / RAMI Technology USA, LLC.