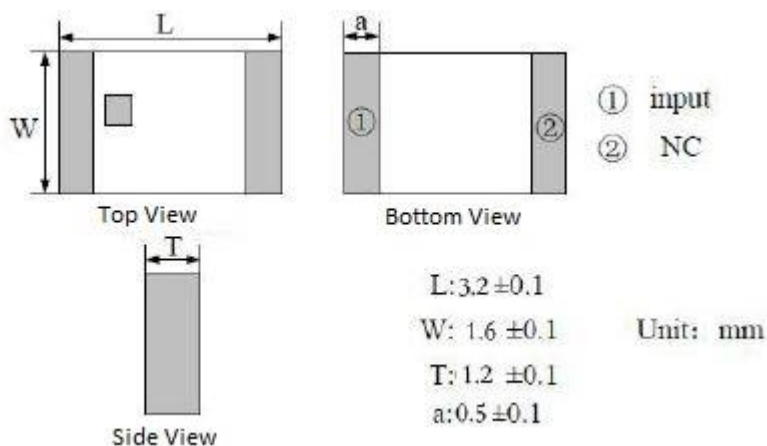
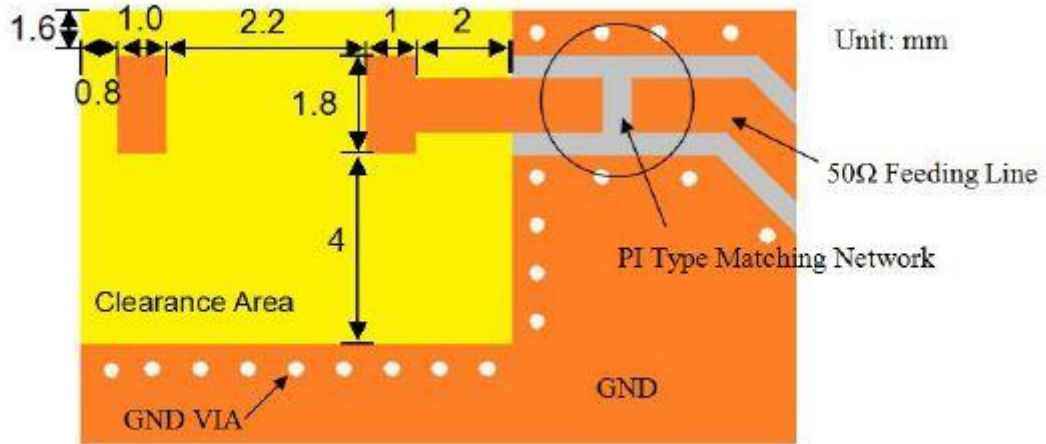


#### ELECTRICAL SPECIFICATION

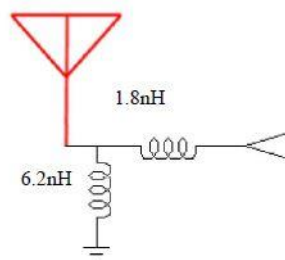
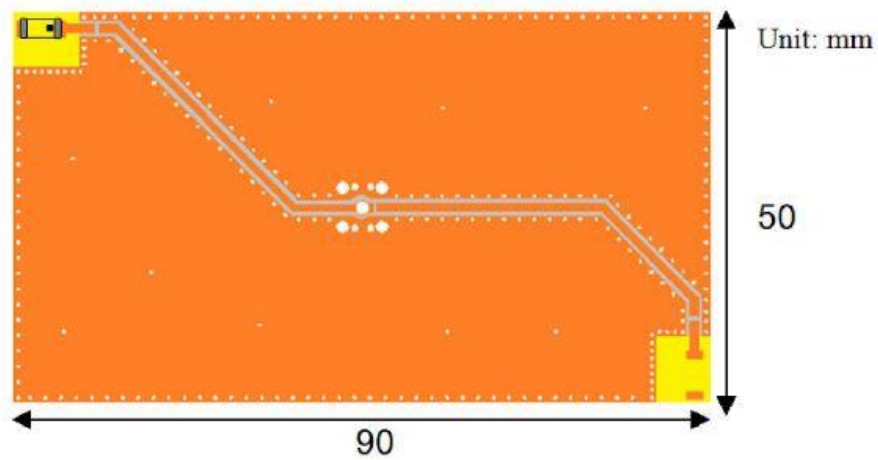
PARAMETERS	SPECIFICATIONS	UNIT
Center Frequency (no matching)	2875	MHz
Center Frequency (after matching)	2450	MHz
Band Width, typ	100	MHz
Peak Gain	5.19	dBi
Impedance	50	$\Omega$
VSWR, max	2.0	-
Polarization	Linear	-
Azimuth Beam Width	Omni-directional	-
Operating Temperature Range	-40 ~ +85	$^{\circ}\text{C}$
Storage Temperature Range	-40 ~ +85	$^{\circ}\text{C}$

#### MECHANICAL SPECIFICATION

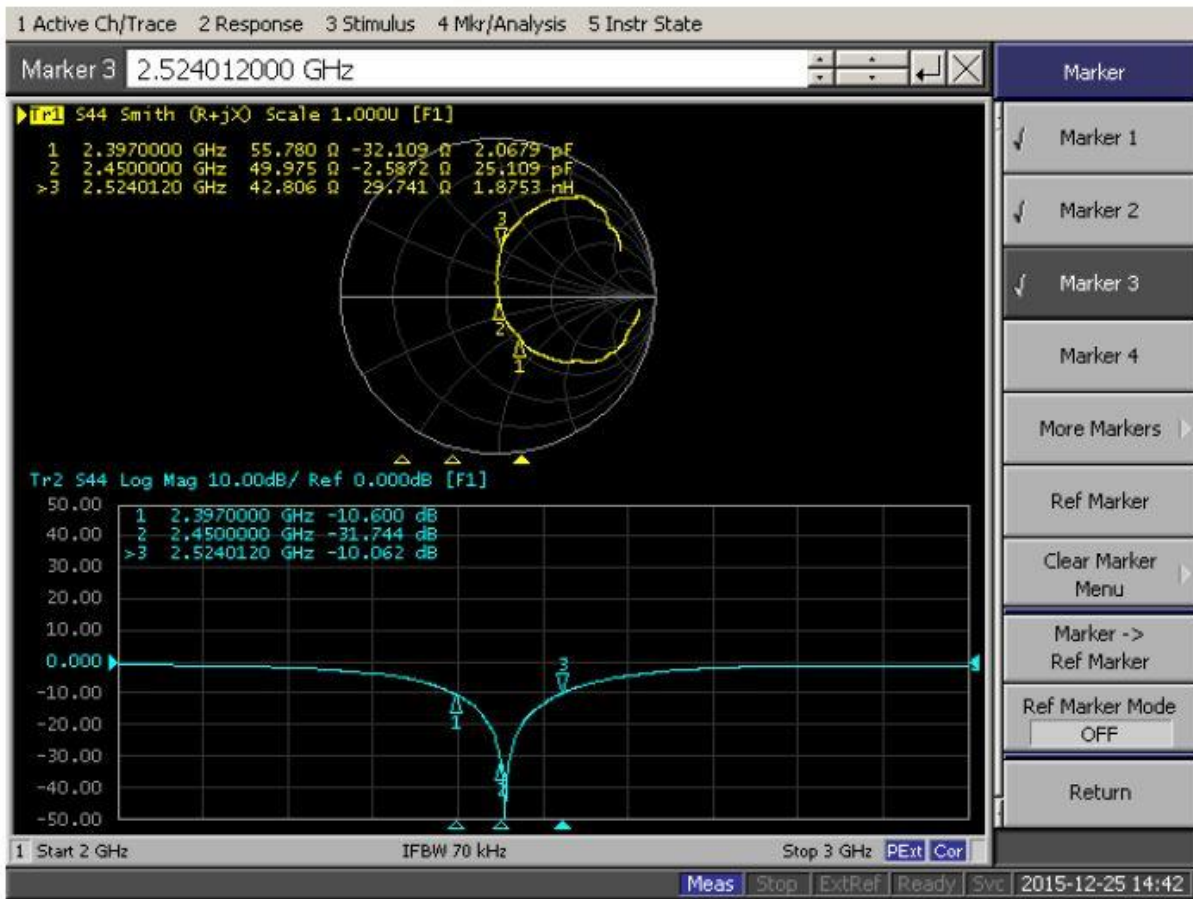




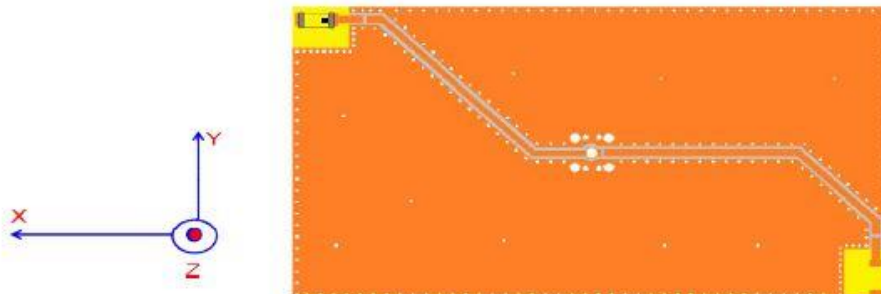
#### ■ EVALUATION BOARD AND MATCHING CIRCUIT



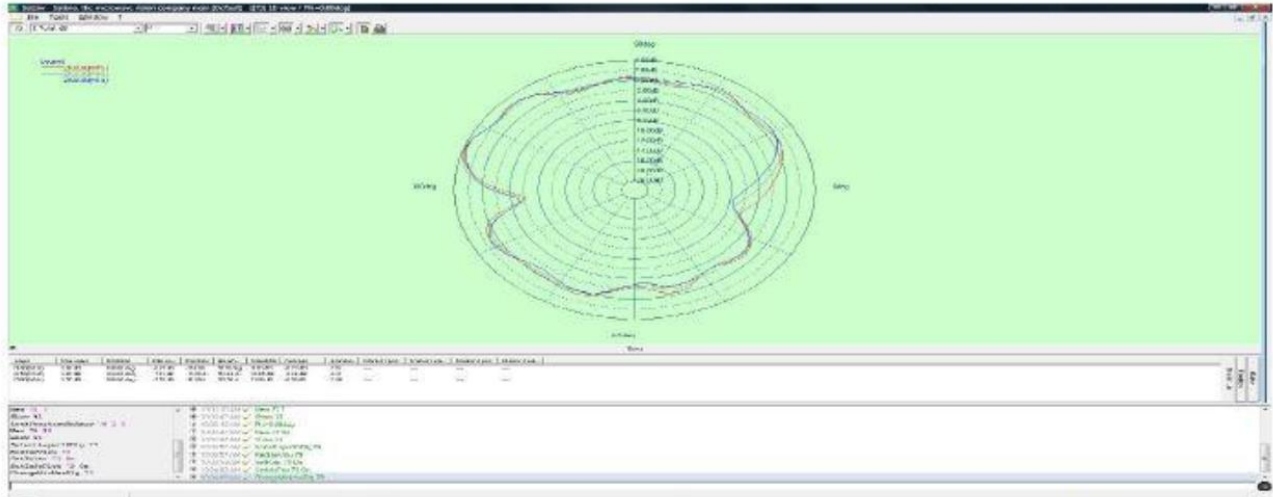
#### FREQUENCY CHARACTERISTICS



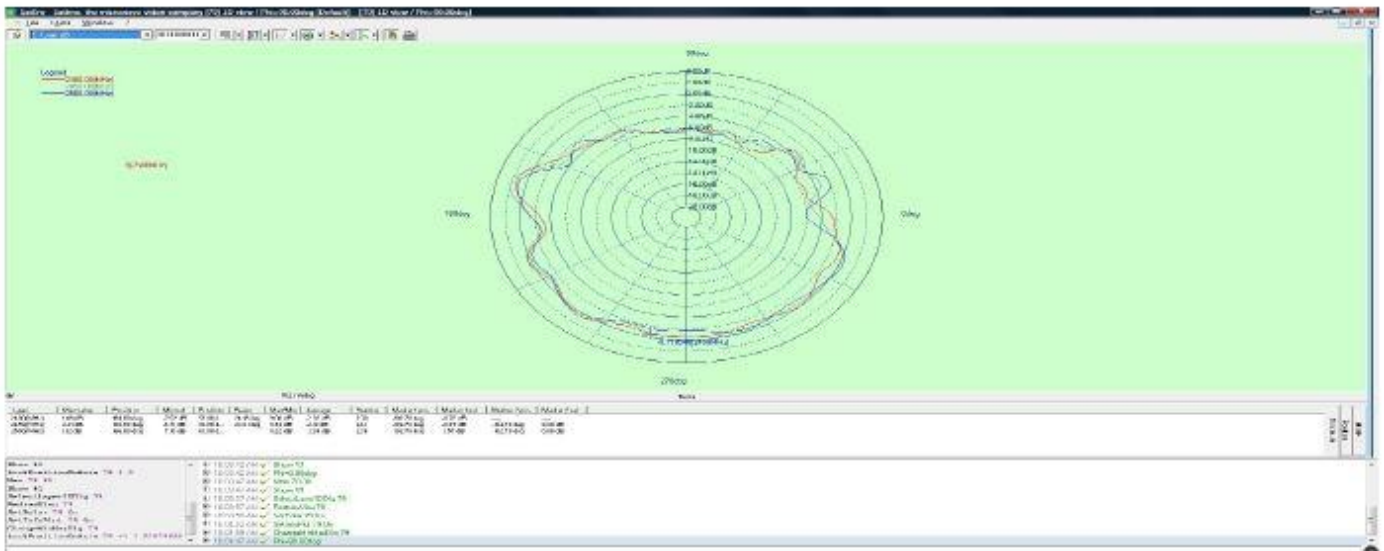
#### RADIATION PATTERN



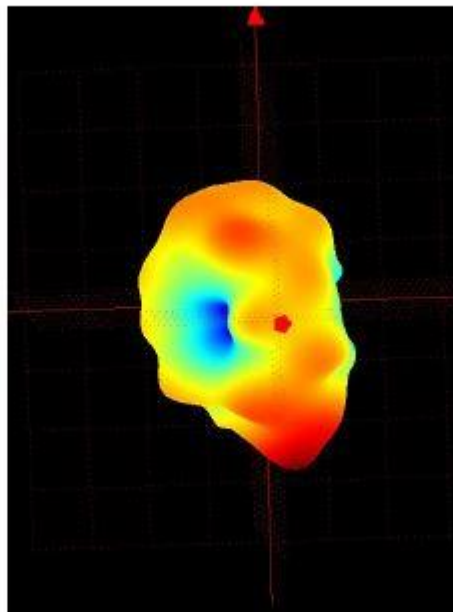
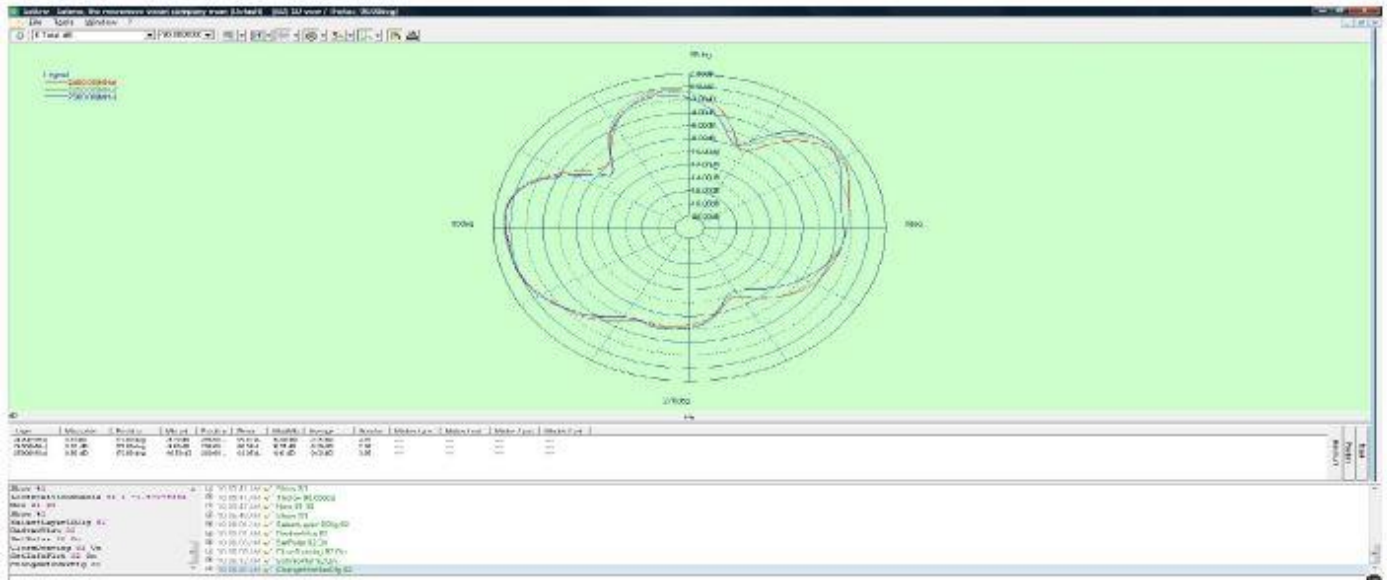
#### X-Z Plane



#### Y-Z Plane



#### X-Y Plane





A **RAMI TECHNOLOGY** Company

# CHIP ANTENNA

Page 6 of 6

**RCA-W2-P-3216-A35-G**

PARAMETERS	VALUES			UNIT
Frequency	2400	2450	2500	MHz
Average Gain	-0.23	-0.36	-0.51	dBi
Peak Gain	4.98	5.19	4.55	dBi
Efficiency	70	71.2	69	%

May, 2016